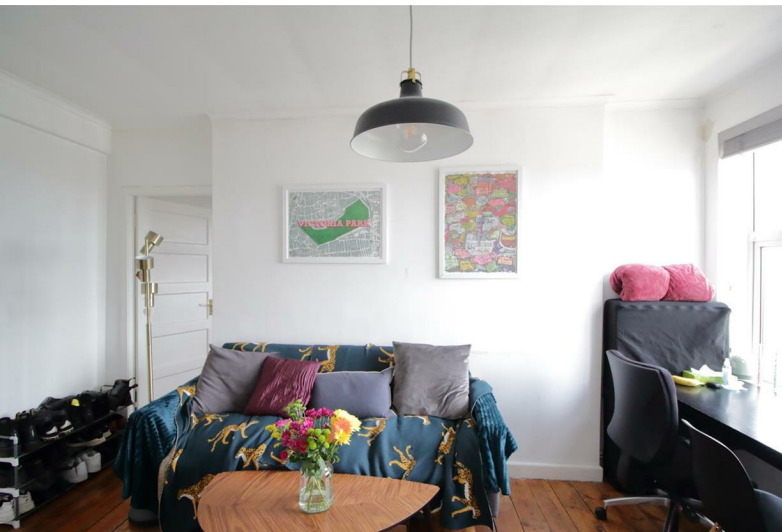


Effra Court | Brixton, SW2



£1,600 Per Month

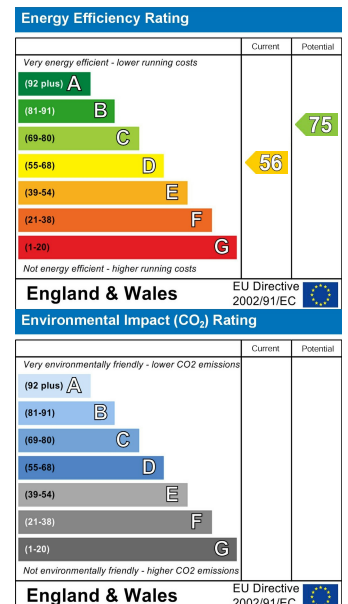
- One bedroom apartment • Excellent location • Popular private block • Hyperoptic in the building (extra charge) • On street residents permit parking available on application • Leasehold covenants may apply

Effra Court | Brixton, SW2



A lovely top floor (with a lift) one bedroom flat in this hugely popular private 1930's block moments from Brixton town centre. Located at the back of the block the flat features a very bright reception room, a scandi meets country style kitchen off it, a double bedroom and a bathroom. The property benefits from wooden stripped floors, double glazed windows and gas central heating. The block is well maintained with security entryphone and communal gardens. Ideally located within walking distance of Brixton town centre, which is home to Brixton Village, Ritzy Cinema, Brixton Academy and Pop Brixton as well as various bars and shops. Transport links include Brixton Victoria line tube station, mainline station and numerous buses to the City and West End. Available from mid April as part furnished.

Monthly rent: £1600. Deposit: £1846. Council tax band B (Lambeth). EPC=D.



These particulars are designed to provide a guideline only and cannot be relied upon as a statement of fact. The description represents the opinion of the author and is not intended to provide false or misleading information. Any prospective purchaser should make further checks on its accuracy. All measurements are approximate and floorplans are for representation only.



Eden Harper
3 Arlington Parade, Brixton Hill, Brixton, SW2 1RH
0207 274 3111
brixsales@edenharper.com
www.edenharper.com