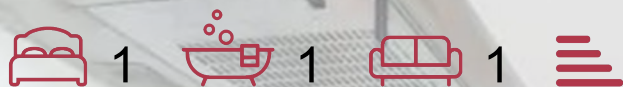




Peckham High Street | London, SE15



Being sold via Secure Sale online bidding. Terms & Conditions apply. Starting Bid £150,000.

This smart one bedroom flat boasts a bright open planned kitchen/reception room, a good sized bedroom with a Juliet balcony and a three piece bathroom suite. It is well located for both transport and local amenities which include several bars, restaurants and local shops. Transport links include local buses, Peckham Rye national rail and Queens Road National rail. Council tax Band B

Pattinsons and Eden Harper are working together for the online auction so details will be shared between both for viewings and offers.

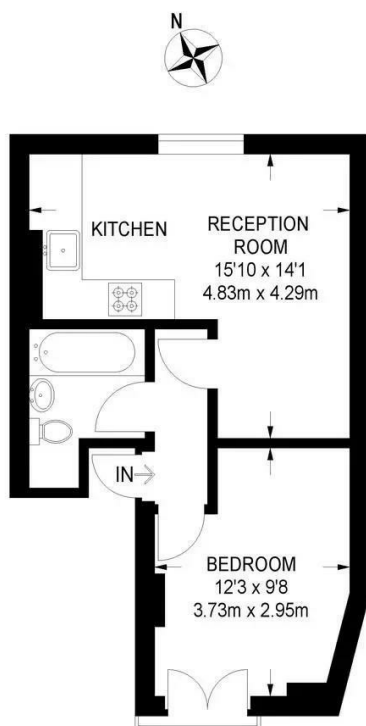
- 1 bedroom flat
- Double bedroom with Juliet balcony
- Open plan kitchen/reception room
- Great location

Guide Price £150,000

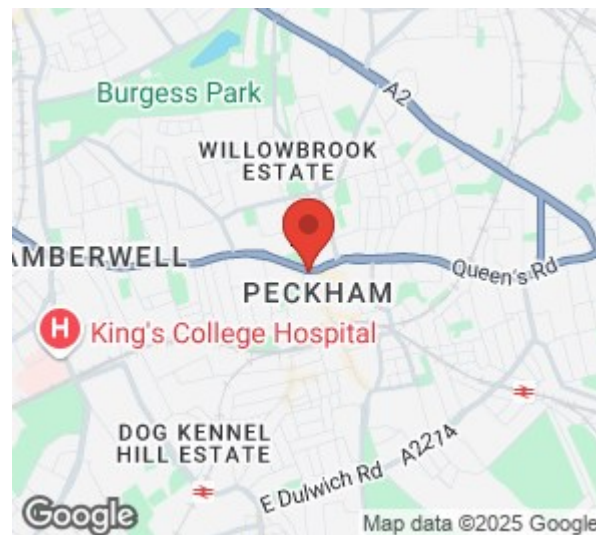
Viewing

Please contact our Brixton Office on 0207 274 3111 if you wish to arrange a viewing appointment for this property or require further information.





THIRD FLOOR
355 SQ FT / 33.0 SQ M



| Energy Efficiency Rating | | |
|---|-------------------------|-----------|
| | Current | Potential |
| Very energy efficient - lower running costs | | |
| (92 plus) A | | |
| (81-91) B | | |
| (69-80) C | | |
| (55-68) D | | |
| (39-54) E | | |
| (21-38) F | | |
| (1-20) G | | |
| Not energy efficient - higher running costs | | |
| England & Wales | EU Directive 2002/91/EC | |

| Environmental Impact (CO ₂) Rating | | |
|---|-------------------------|-----------|
| | Current | Potential |
| Very environmentally friendly - lower CO ₂ emissions | | |
| (92 plus) A | | |
| (81-91) B | | |
| (69-80) C | | |
| (55-68) D | | |
| (39-54) E | | |
| (21-38) F | | |
| (1-20) G | | |
| Not environmentally friendly - higher CO ₂ emissions | | |
| England & Wales | EU Directive 2002/91/EC | |



These particulars, whilst believed to be accurate are set out as a general outline only for guidance and do not constitute any part of an offer or contract. Intending purchasers should not rely on them as statements of representation of fact, but must satisfy themselves by inspection or otherwise as to their accuracy. No person in this firm's employment has the authority to make or give any representation or warranty in respect of the property.

3 Arlington Parade, Brixton Hill, Brixton, SW2 1RH

Tel: 0207 274 3111 | briksales@edenharper.com | www.edenharper.com