



## Sudbourne Road | Brixton, SW2



A stunning 2 bedroom conversion flat on one of Brixton's most sought after residential roads. Finished to a high standard, the flat also retains much of its period charm and character. Occupying the first floor of a grand terraced period house, the flat features a spacious living room with a feature fireplace, a big bay window and stripped wooden floors as well as a large modern kitchen/breakfast room. There are 2 double bedrooms, one bigger than the other and a modern bathroom suite.

Ideally located, the flat is within a short walk of Brixton town centre, which is home to Brixton Village, Ritzy Cinema, Brixton Academy and Pop Brixton as well as numerous bars and shops. Clapham High Street with yet more bars and shops is within a 20 minute walk.

Transport links are excellent and include Brixton tube station, mainline station and numerous buses to the City and West End.

No chain. Lease: 148 years remaining. S/C: £704.64pa. GR: £0. EPC=C. Council tax band D (Lambeth).

**£560,000**

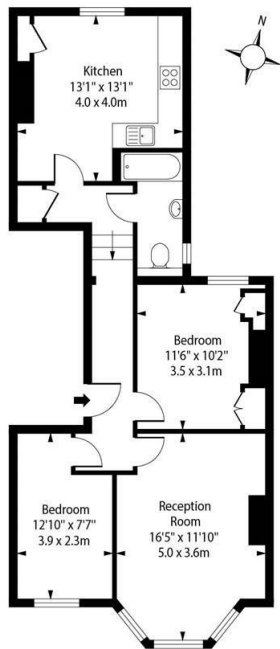
**Viewing**

- Two bedroom conversion flat
- Spacious living room
- Large kitchen
- Period features
- Excellent location
- Close to Brixton tube

Please contact our Brixton Office on 0207 274 3111 if you wish to arrange a viewing appointment for this property or require further information.



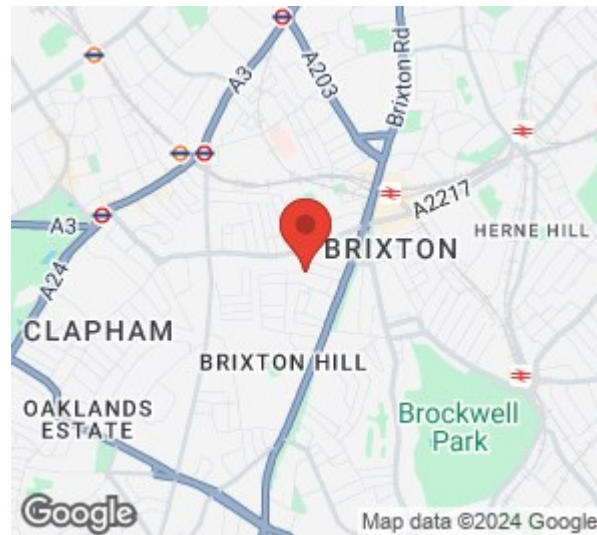
Sudbourne Road,  
Brixton, SW2 5AF



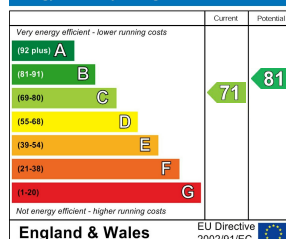
First Floor

Approx Gross Internal Area 695 Sq Ft - 64.6 Sq M

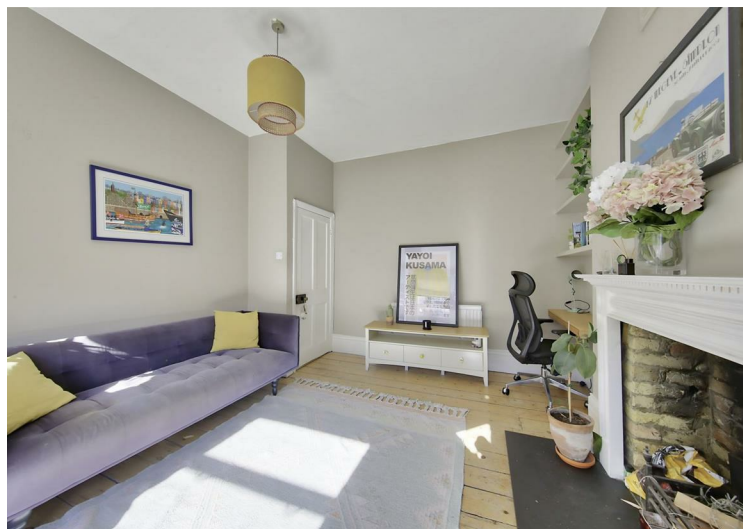
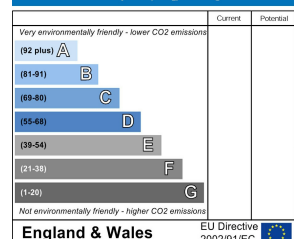
For Illustration Purposes Only - Not To Scale  
photosandfloorplans.com ©



Energy Efficiency Rating



Environmental Impact (CO<sub>2</sub>) Rating



These particulars, whilst believed to be accurate are set out as a general outline only for guidance and do not constitute any part of an offer or contract. Intending purchasers should not rely on them as statements of representation of fact, but must satisfy themselves by inspection or otherwise as to their accuracy. No person in this firm's employment has the authority to make or give any representation or warranty in respect of the property.

3 Arlington Parade, Brixton Hill, Brixton, SW2 1RH

Tel: 0207 274 3111 | [brixsales@edenharper.com](mailto:brixsales@edenharper.com) | [www.edenharper.com](http://www.edenharper.com)