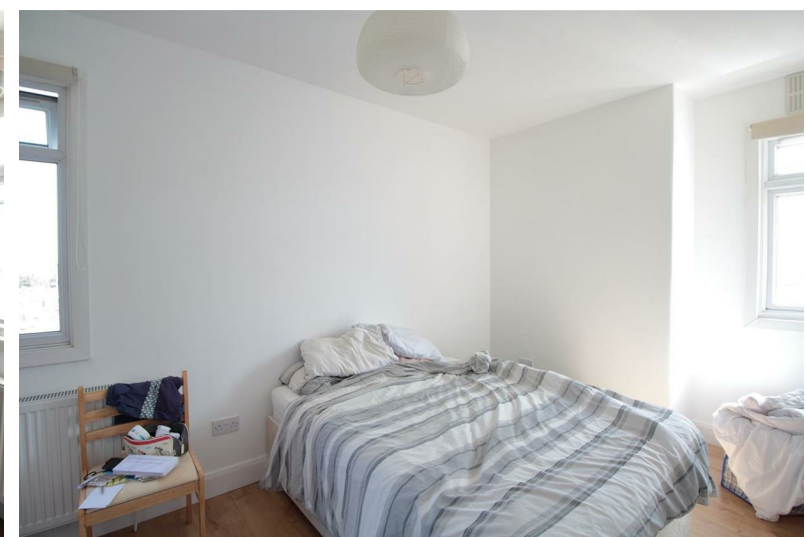
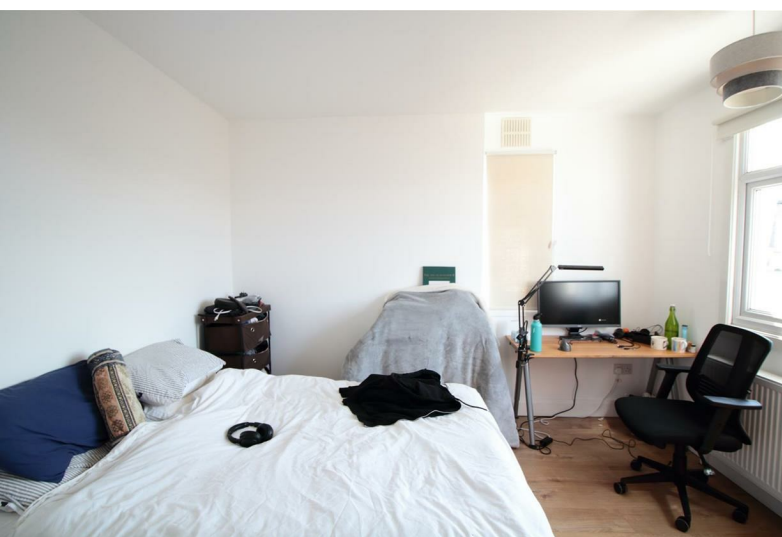


# Brixton Hill Court | Brixton Hill, SW2



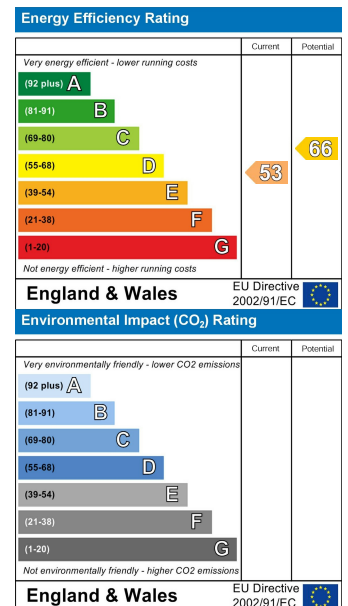
**£1,950 PCM**

- Two bedroom apartment
- Arranged over 2 floors
- Ideally located
- Popular private block
- Leasehold covenants may apply
- On street residents permit parking available on application (TBC)

# Brixton Hill Court | Brixton Hill, SW2



A superb two bedroom split-level apartment in this popular 1930's private mansion block close to Brixton town centre. Situated at the rear of the building and arranged over the top two floors, the flat features a spacious reception room and a cosy but modern kitchen on the lower floor. There are 2 good sized double bedrooms and a small modern bathroom upstairs. The flat also benefits from double glazed windows and entry phone system. Brixton Hill Court is well maintained and there is a large communal garden to the rear. Ideally located within a few minutes' walk of Brixton town centre, which is home to Brixton Village, Ritzy Cinema, Brixton Academy and Pop Brixton as well as various bars and shops. Transport links include Victoria line tube station, mainline station and numerous buses to the City and West End. Perfect for 2 professional sharers or a couple and available from mid June as part furnished or unfurnished. Monthly rent: £1950. Deposit: £2250. Council tax band C (Lambeth). EPC=E.



These particulars are designed to provide a guideline only and cannot be relied upon as a statement of fact. The description represents the opinion of the author and is not intended to provide false or misleading information. Any prospective purchaser should make further checks on its accuracy. All measurements are approximate and floorplans are for representation only.



**Eden Harper**  
 3 Arlington Parade, Brixton Hill, Brixton, SW2 1RH  
**0207 274 3111**  
 brixsales@edenharper.com  
 www.edenharper.com