



**Hayward
Tod**

3 bedroom Detached Bungalow | Pinecroft | Carlisle | CA3 0DB

£255,000





large entrance porch | inner hallway | open plan living dining room | kitchen | three bedrooms | family bathroom | driveway parking | attached single garage | large low maintenance rear garden | double glazing | gas central heating | mains water electricity and drainage | EPC D | council tax band D

APPROXIMATE MILEAGES

Supermarket 0.6 | M6 motorway 1 | city centre 2.3 | Penrith - North Lake District 23.6 | Newcastle 59

WHY PINECROFT?

A popular residential development to the north of the city, Pinecroft is well located for access to a wide range of amenities as well as public transport links. The main road network is close to hand, with the M6 motorway being just a couple of minutes drive and the city centre also being within easy reach. There are a number of shops and supermarkets within a short distance.

ACCOMMODATION

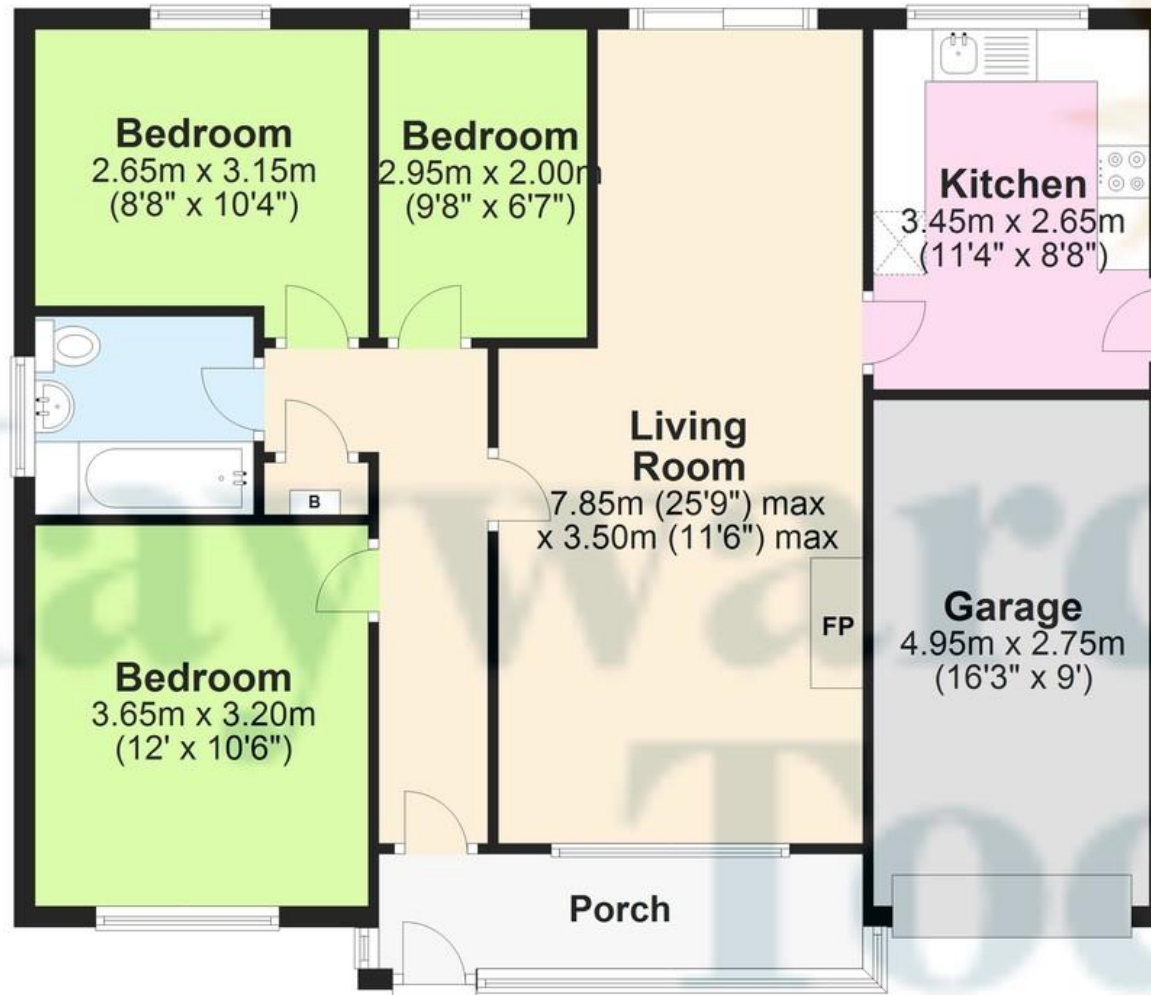
Ready to be modernised and improved by the current owners with significant potential to extend to the rear if desired the property occupies a generous corner plot with a favourable south westerly aspect at the rear. There are three bedrooms, two doubles and a single. A good size front to back living dining space opens out via patio doors to the rear garden. There is also a kitchen with access to the side lane. A front entrance porch provides a useful additional space. The bathroom, which would benefit from modernisation, sits at the side of the property between the two larger bedrooms. Externally there is a paved driveway and low maintenance front with a large low maintenance garden at the rear which is afforded a good level of privacy and benefits from a pleasant south westerly aspect.





Ground Floor

Approx. 93.2 sq. metres (1003.1 sq. feet)



Total area: approx. 93.2 sq. metres (1003.1 sq. feet)

Contact

6 Paternoster Row,
Carlisle Cumbria CA3 8TT

01228 810 300
info@haywardtod.co.uk
haywardtod.co.uk

Agents note

Whilst every care has been taken to prepare these sales particulars, they are for guidance purposes only. All measurements are

approximate and are for general guidance purposes only and whilst every care has been taken to ensure their accuracy, they should not be relied upon and potential buyers are advised to recheck the measurements.