



**Hayward  
Tod**

**3 bed, 1 ensuite Mid Terrace House | 6 Red Bank Terrace | Carlisle | CA2 4BD**  
**Offers In Region Of £125,000**







A pleasant three bed, one ensuite terrace house located on a quiet dead end road just a mile from the city centre. Two reception rooms. Enclosed town garden.

#### ACCOMMODATION SUMMARY

Entrance hall and stairs | Lounge opening into dining room  
| Galley kitchen | Rear lobby | Bathroom | First floor  
landing | Front double bedroom one with ensuite shower  
room | Rear double bedroom two | Rear bedroom three |  
Enclosed rear yard | All mains services | Gas central Heating  
| Council Tax Band - A | EPC rating - pending | Freehold

#### APPROXIMATE MILEAGES

CoOp and chemist 0.2 (4 minute walk) | Central Carlisle -  
West Coast Mainline Station 1 | M6 J43 2.5 | Lake District  
National Park - Caldbeck 12.8, Pooley Bridge Ullswater 24.2  
| Newcastle Airport 56.1

#### WHY RED BANK TERRACE?

Tree lined road just one mile from the city centre and close  
to a range of convenience stores and services. Nearby river  
walks. Easy access to the main road network including the  
soon to be completed southern bypass and our region's  
areas of natural and historic interest.



#### DESCRIPTION

A popular style terrace with three bedrooms and the  
benefit of an ensuite shower room to the main bedroom.  
The living space is generous including two connecting living  
spaces. At the rear is an enclosed town garden with access  
to the lane. There is further scope to upgrade and as such  
the property would make a good first time buy.

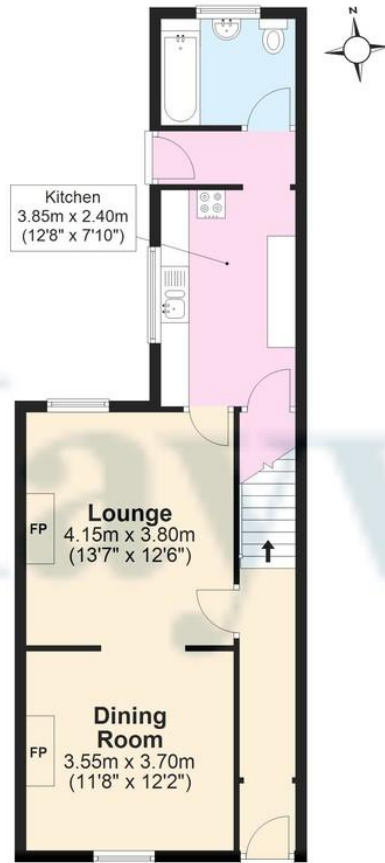






## Ground Floor

Approx. 54.5 sq. metres (586.3 sq. feet)



## First Floor

Approx. 47.0 sq. metres (505.4 sq. feet)



Total area: approx. 101.4 sq. metres (1091.7 sq. feet)

## Contact

6 Paternoster Row,  
Carlisle Cumbria CA3 8TT

01228 810 300  
[info@haywardtod.co.uk](mailto:info@haywardtod.co.uk)  
[haywardtod.co.uk](http://haywardtod.co.uk)

## Agents note

Whilst every care has been taken to prepare these sales particulars, they are for guidance purposes only. All measurements are

approximate and are for general guidance purposes only and whilst every care has been taken to ensure their accuracy, they should not be relied upon and potential buyers are advised to recheck the measurements.