

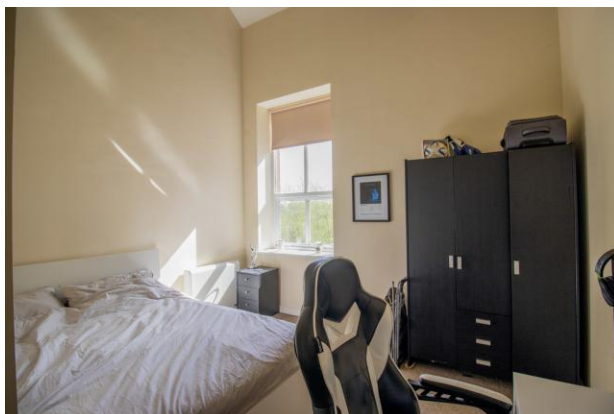


**Hayward
Tod**

1 Bedroom Apartment | Waterside House | Denton Mill Close | Carlisle | CA2 5HF

£79,950





Perfectly proportioned one bed, top floor apartment with allocated parking. Great location with river views and a short walk to a wide range of amenities within Denton Holme.

Ground floor secure communal entry into stair and lift lobby | Second floor communal landing | Hall | Open plan living kitchen | Double bedroom | Bathroom | Communal grounds and access to riverfront | Designated parking space | Visitor parking | EPC - E | Council Tax Band - B | Electric heating | Leasehold - 999 years from 2004 | Service charge £436 per qt

APPROXIMATE MILEAGES Denton Holme shops - Co Op 0.5 | Carlisle Station 1.2 | M6 J43 3

ACCOMMODATION Offered in good order throughout, the property has a spacious open plan kitchen living space which is flooded with natural light

thanks to the large windows and high ceilings. The kitchen has a range of fitted units. The bathroom, with shower over the bath is compact but well laid out. There is a good size double bedroom, again with a large window and high ceilings. Both the bedroom and living room look through the trees towards the river. The property is on the top floor and is accessible both by stairs and a lift. There is also an allocated parking space alongside plenty of visitor parking and well maintained communal grounds.

WHY DENTON HOLME? Situated in the Denton Mill development in a peaceful corner of Denton Holme adjacent to the River Caldew, the property is ideally located for access to amenities, the city centre and riverside walks. Denton Holme has a variety of local shops as well as being served by a regular bus to the city centre.



Contact

6 Paternoster Row,
Carlisle Cumbria CA3 8TT

01228 810 300
info@haywardtod.co.uk
haywardtod.co.uk

Agents note

Whilst every care has been taken to prepare these sales particulars, they are for guidance purposes only. All measurements are

approximate and are for general guidance purposes only and whilst every care has been taken to ensure their accuracy, they should not be relied upon and potential buyers are advised to recheck the measurements.