



Globe View House

27 Pocock Street, SE1

£815,000 Asking Price

Beautifully presented two bedroom apartment just moments from Southwark Station. Features a master bedroom with ensuite, second bedroom and bathroom, open plan kitchen and living room and two balconies. Residents benefit from concierge and lift.

CHESTERTONS
Tower Bridge



Globe View House

27 Pocock Street, SE1

- Two bedroom
- Two bathroom
- Balconies
- Long lease
- Lift
- Concierge



A beautifully presented and well-designed two bedroom apartment just moments from Southwark Tube. The property is within a secure development and residents benefit from a concierge, lift and long lease.

The apartment is over two levels with a bedroom and wet room on the lower level, whilst upstairs there is bedroom with access to a private balcony, second bathroom and open plan kitchen and living area with access to a second private balcony.

The area surrounding the apartment includes the Southbank, The Thames, The Cut, The Tate Modern and Borough. Transport links include Southwark Tube, Waterloo East, Waterloo and London Bridge

Tenure: Leasehold 120 years remaining

Service Charge: £2061

Ground Rent: £550

Energy Efficiency Rating		
	Current	Potential
Very energy efficient - lower running costs		
(92+) A		
(81-91) B	84	84
(69-80) C		
(55-68) D		
(39-54) E		
(21-38) F		
(1-20) G		
Not energy efficient - higher running costs		
England, Scotland & Wales		EU Directive 2002/91/EC

Chestertons Tower Bridge Sales

220 Tower Bridge Road

Tower Bridge

London

SE1 2UP

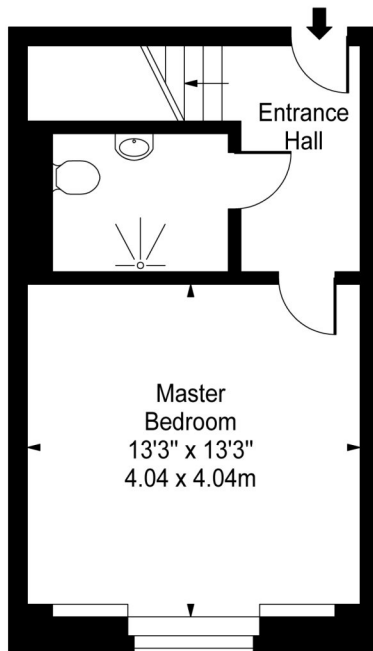
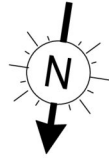
sales.towerbridge@chestertons.com

020 7357 7999

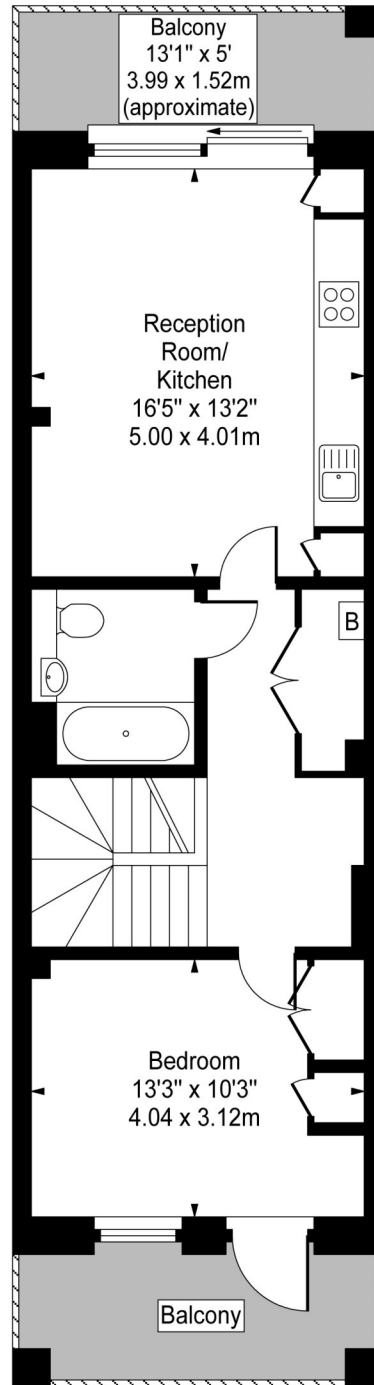
chestertons.com



Globe View House, Pocock Street, SE1



First Floor



Second Floor

Approx Gross Internal Area **860 Sq Ft - 79.89 Sq M**

For Illustration Purposes Only - Not To Scale

www.goldlens.co.uk

Ref. No. 008105J