



Bankside Lofts

65 Hopton Street, SE1

Asking Price £1,700,000

Unique Southbank loft with double-height ceilings, mezzanine kitchen, panoramic views, 24-hour concierge, parking, and superb location.

CHESTERTONS



Bankside Lofts

65 Hopton Street, SE1

- Situated in one of London's most vibrant neighbourhoods
- Unique apartment with soaring double-height ceilings
- Floating mezzanine level ideal for entertaining
- Spectacular views of the Thames, Tate Modern & the City
- South-facing workspace
- 24-hour concierge & secure underground parking
- Residents' gym & communal roof terrace
- Moments from Southwark & Blackfriars stations



This apartment at Bankside Lofts is truly distinctive and set within one of London's most vibrant cultural quarters. This home offers circa 1542 sq ft of beautifully designed living space. Natural light pours in from three sides, illuminating the dramatic double-height living room with its floating mezzanine and breath-taking views of the Tate Modern, the Thames, and the City skyline. The second bedroom features fitted wardrobes and sits adjacent to a spacious bathroom.

Upstairs, the open-plan kitchen and dining area overlook the living space below, creating a superb setting for entertaining. The principle bedroom with fitted wardrobes and a sleek shower room complete the upper level. Residents of Bankside Lofts benefit from 24-hour concierge service, a residents' gym, secure underground parking, and access to a communal roof terrace with panoramic views across London. With Southwark and Blackfriars stations just 0.4 miles away, and the River Thames and Tate Modern on your doorstep, this apartment offers an exceptional blend of space, style, and location.

Tenure: Leasehold 968 years 5 months

Service Charge: £12800 pa

Ground Rent: £200 pa

Local Authority: London Borough of Southwark

Council Tax Band: G

Score	Energy rating	Current	Potential
92+	A		
81-91	B		
69-80	C	78 C	86 B
55-68	D		
39-54	E		
21-38	F		
1-20	G		

Chestertons Tower Bridge Sales

220 Tower Bridge Road

Tower Bridge

London

SE1 2UP

towerbridge@chestertons.co.uk

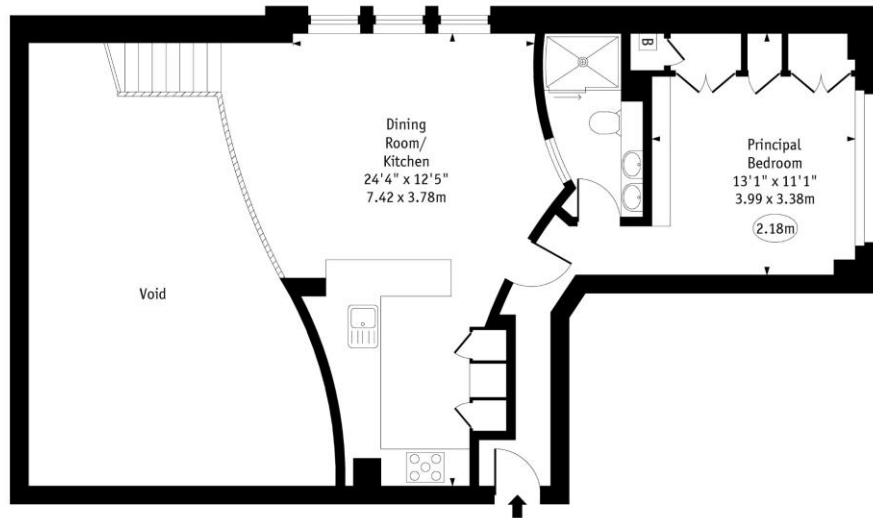
020 7357 7999

chestertons.co.uk

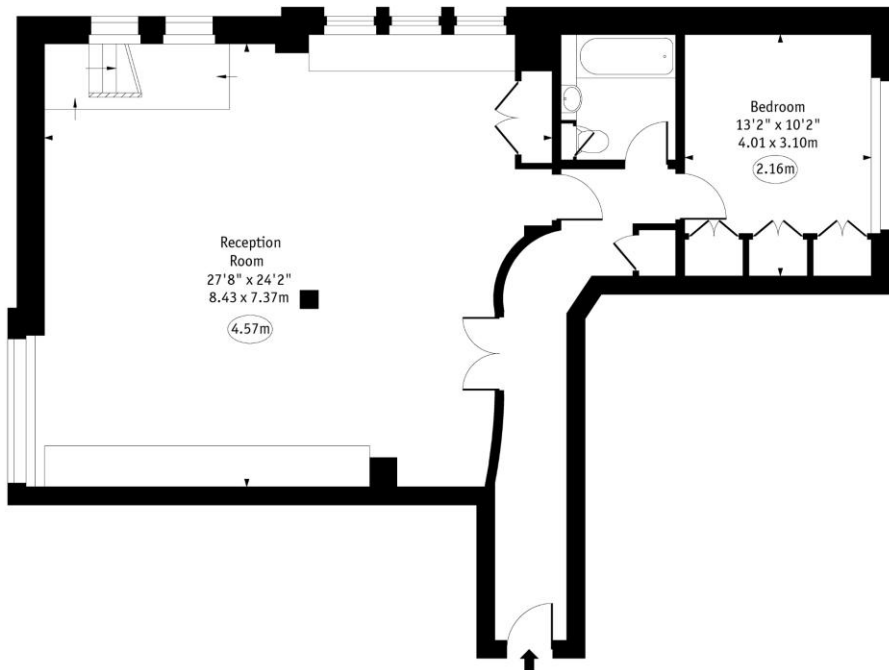
Bankside Lofts,
Hopton Street, SE1



○ - Ceiling Height



Fifth Floor



Fourth Floor

Approx Gross Internal Area 1542 Sq Ft - 143.25 Sq M
(Excluding Void)

Every attempt has been made to ensure the accuracy of the floor plan shown.
However, all measurements, fixtures, fittings, and data shown are approximate interpretations and
for illustrative purposes only. Measured according to the RICS. Not To Scale.
www.goldlens.co.uk
Ref. No. 029146KH

