



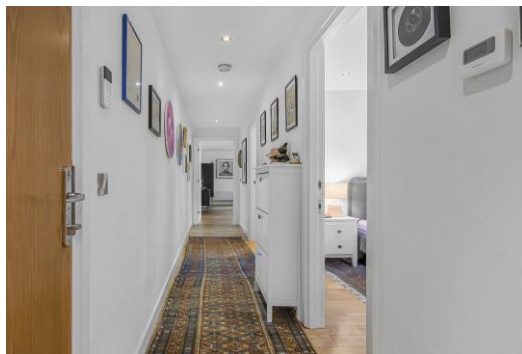
Rococco House

65 Princelet Street, E1

Asking Price £890,000

Stunning Warehouse Conversion in the Heart of Spitalfields

CHESTERTONS



Rococco House

65 Princelet Street, E1

- Two Bedrooms
- Two Bathrooms
- Warehouse Conversion
- Leasehold
- Great Location
- Excellent Transport Links



Nestled in the vibrant heart of Spitalfields, just moments from the iconic Brick Lane, this exceptional 1045 sq. ft. warehouse conversion offers an unparalleled living experience. Positioned on the first floor, the property blends the timeless allure of industrial features with sleek, modern design. Expansive windows flood the open-plan reception area with natural light, highlighting the exposed brickwork and creating an inviting, airy atmosphere. This expansive living space flows seamlessly into a high-spec kitchen, equipped with top-of-the-line fixtures and finishes – ideal for both entertaining and everyday living. The two generous double bedrooms are complemented by walk-in wardrobes, offering ample storage and a touch of luxury. The property also features two meticulously designed bathrooms, each adding a modern yet stylish flair.

With its prime location, residents will enjoy unrivalled access to the bustling cultural scene of Brick Lane, brimming with eclectic cafes, trendy bars, and unique shops. For those commuting, Aldgate East Tube Station is just a short 500m walk away, providing excellent transport links to the rest of London. This property offers the perfect balance of style, comfort, and convenience, set in one of London's most desirable and sought-after locations.

Tenure: Leasehold 113 years 1 months

Service Charge: £2500 pa

Ground Rent: £250 pa

Local Authority: Tower Hamlets

Council Tax Band: E

Score	Energy rating	Current	Potential
92+	A		
81-91	B		
69-80	C	77 C	83 B
55-68	D		
39-54	E		
21-38	F		
1-20	G		

Chestertons Tower Bridge Sales

220 Tower Bridge Road

Tower Bridge

London

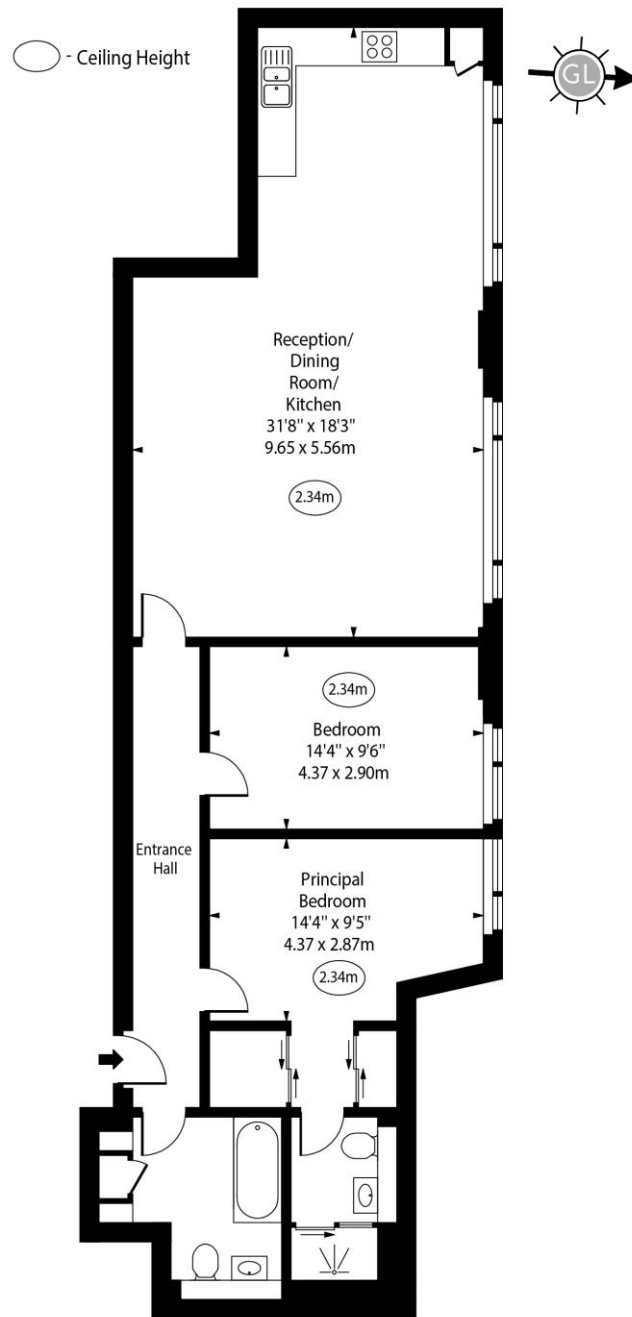
SE1 2UP

towerbridge@chestertons.co.uk

020 7357 7999

chestertons.co.uk

Rococco House,
Princelet Street, E1



First Floor

Approx Gross Internal Area 1045 Sq Ft - 97.08 Sq M

Every attempt has been made to ensure the accuracy of the floor plan shown.
However, all measurements, fixtures, fittings, and data shown are approximate interpretations and
for illustrative purposes only.

Measured according to the RICS IPMS 2. Not To Scale.

www.goldlens.co.uk

Ref. No. 027778M

