



# Kellow House

Tennis Street, SE1

Offers in excess of £450,000

Beautifully modern one-bedroom apartment is situated on the second floor of Kellow House, SE1, offering a stylish and well-appointed living space in a sought-after London location.



# Kellow House

## Tennis Street, SE1

- One Double Bedroom
- Separate Kitchen
- Lift Access
- Second Floor
- Communal Garden
- Permit Parking Available
- Long Lease
- Moments From London Bridge Station & Borough Market



Designed with both comfort and practicality in mind, the apartment boasts a spacious and airy reception room, bathed in natural light, creating a welcoming atmosphere ideal for both relaxation and entertaining. The separate modern kitchen has been thoughtfully designed with sleek cabinetry, ample counter space, and integrated appliances, making it as functional as it is stylish.

The generous double bedroom features built-in storage, providing excellent organisation while maintaining a sense of space and tranquillity. The large, contemporary bathroom has been finished to a high standard, complete with modern fixtures and a clean, elegant design.

Residents of Kellow House benefit from lift access, well-maintained communal gardens, and the convenience of permit parking while also being surrounded by a vibrant mix of cafes, restaurants, and cultural hotspots, this apartment presents a fantastic opportunity for those looking to enjoy the best of London living.

The location is highly desirable, offering excellent transport links, with easy access to the City, London Bridge and Borough stations are just moments away, providing excellent transport and airport links.

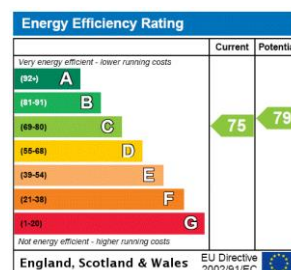
**Tenure:** Leasehold 141 years 7 months

**Service Charge:** £1919 pa

**Ground Rent:** £10 pa

**Local Authority:** Southwark Council

**Council Tax Band:** A



### *Chestertons Tower Bridge Sales*

220 Tower Bridge Road

Tower Bridge

London

SE1 2UP

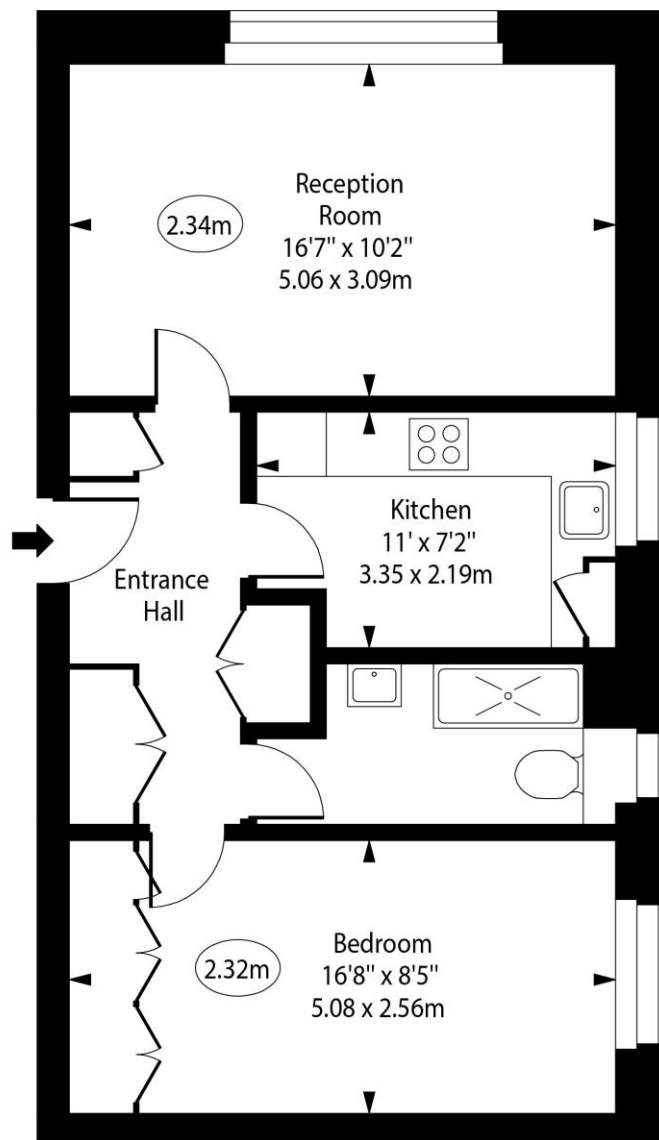
towerbridge@chestertons.co.uk

020 7357 7999

chestertons.co.uk

# Kellow House, Tennis Street, SE1

○ - Ceiling Height



Second Floor

Approx Gross Internal Area      540 Sq Ft - 50.17 Sq M

For Illustration Purposes Only - Not To Scale

[www.goldlens.co.uk](http://www.goldlens.co.uk)

Ref. No. 027108F

