



Storks Road

London, SE16

Asking Price £800,000

Charming Three-Bedroom Victorian Home in Prime Bermondsey Location



Storks Road

London, SE16

- Victorian Terraced house
- Three Double Bedrooms
- Large Garden
- Freehold
- Close to Transport
- Great Location
- Chain Free



This beautifully presented three-bedroom Victorian home perfectly combines timeless charm with modern living, offering the added advantage of freehold ownership. Ideally located just moments from Bermondsey Underground Station, the property enjoys excellent transport links, while on-street parking adds extra convenience. The ground floor boasts a spacious reception room, a separate dining room, and a generously sized eat-in kitchen, creating a harmonious flow between living, dining, and entertaining spaces. A convenient downstairs WC enhances the practicality of the layout, making it ideal for families and guests alike.

Upstairs, the property features three well-proportioned double bedrooms, each bathed in natural light and offering ample storage space. A beautifully appointed family bathroom completes this level, providing a relaxing space for unwinding. To the rear, the property enjoys a private garden, a perfect sanctuary for outdoor dining, gardening, or simply relaxing in peace after a busy day. This exceptional home offers a rare opportunity for both families seeking a comfortable place to settle and investors looking to capitalize on the desirable location. The seamless fusion of Victorian character and modern amenities makes this property an enticing prospect in one of London's most vibrant and well-connected areas.

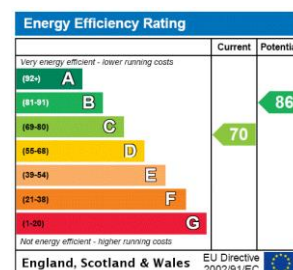
Tenure: Freehold

Service Charge: £0

Ground Rent: £0

Local Authority: London Borough of Southwark

Council Tax Band: D



Chestertons Tower Bridge Sales

220 Tower Bridge Road

Tower Bridge

London

SE1 2UP

towerbridge@chestertons.co.uk

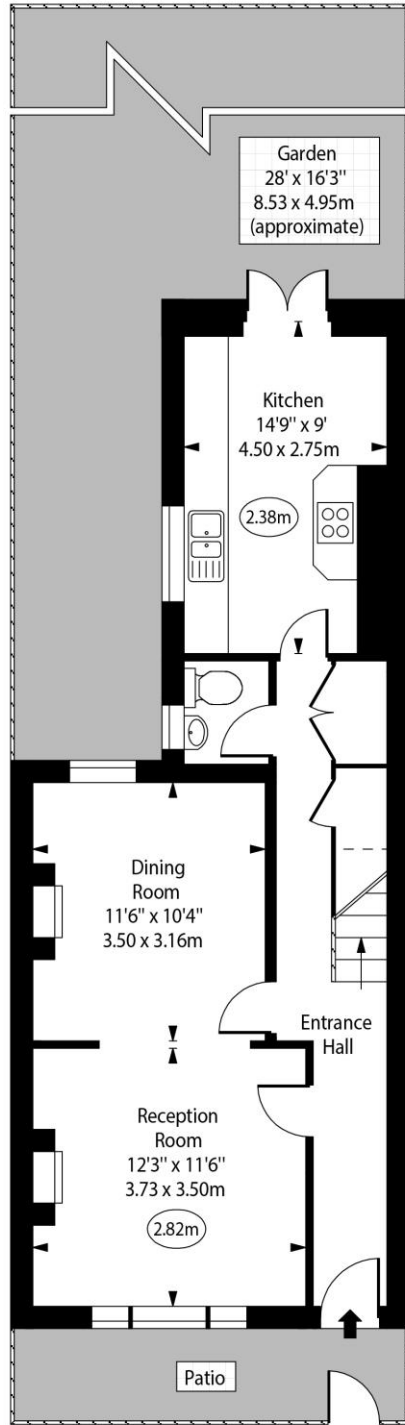
020 7357 7999

chestertons.co.uk

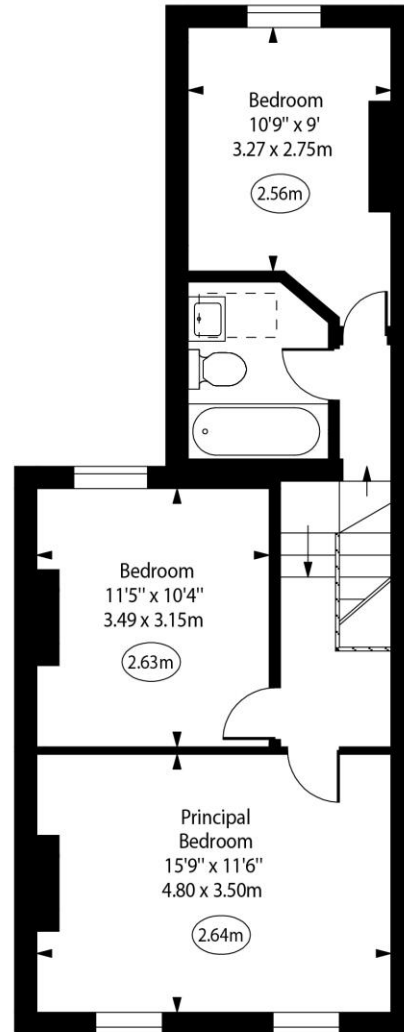
Storks Road, SE16



○ - Ceiling Height



Ground Floor



First Floor

Approx Gross Internal Area

1100 Sq Ft - 102.19 Sq M

For Illustration Purposes Only - Not To Scale

www.goldlens.co.uk

Ref. No. 026956R

