



Arcadia Court

45 Old Castle Street, E1

Asking Price £370,000

Awesome One-Bedroom Apartment in Historic Arcadia Court, Moments from Liverpool Street and Spitalfields



Arcadia Court

45 Old Castle Street, E1

- One Bedroom
- One Bathroom
- Leasehold
- Communal Garden
- Great Location
- Excellent Transport Links



This charming one-bedroom apartment, nestled in the historic Arcadia Court (formerly Wentworth Dwellings), offers a perfect fusion of period elegance and modern convenience. Featuring a spacious bedroom, a bright and airy living room, a fully equipped separate kitchen, and a three-piece bathroom, each room is filled with natural light thanks to large windows throughout. The simple décor and blank canvas design provide the perfect opportunity to personalise the space and make it your own. The property also benefits from a communal courtyard and offers breath-taking views of London's skyline.

Situated just south of Spitalfields and on the edge of the City, the location provides easy access to vibrant local amenities, including Spitalfields Market, Brick Lane, and an array of restaurants, bars, and boutiques. Excellent transport links, with Aldgate and Liverpool Street Stations nearby, offer seamless connections across London via multiple Underground lines and National Rail services.

Tenure: Leasehold 91 years 5 months

Service Charge: £3249.12 pa

Ground Rent: £185 pa

Local Authority: Tower Hamlets

Council Tax Band: C

| Energy Efficiency Rating | | |
|---|---------|-------------------------|
| | Current | Potential |
| Very energy efficient - lower running costs | | |
| (92-100) A | | |
| (81-91) B | | |
| (69-80) C | 77 | 77 |
| (55-68) D | | |
| (39-54) E | | |
| (21-38) F | | |
| (1-20) G | | |
| Not energy efficient - higher running costs | | |
| England, Scotland & Wales | | EU Directive 2002/91/EC |

Chestertons Tower Bridge Sales

220 Tower Bridge Road

Tower Bridge

London

SE1 2UP

towerbridge@chestertons.co.uk

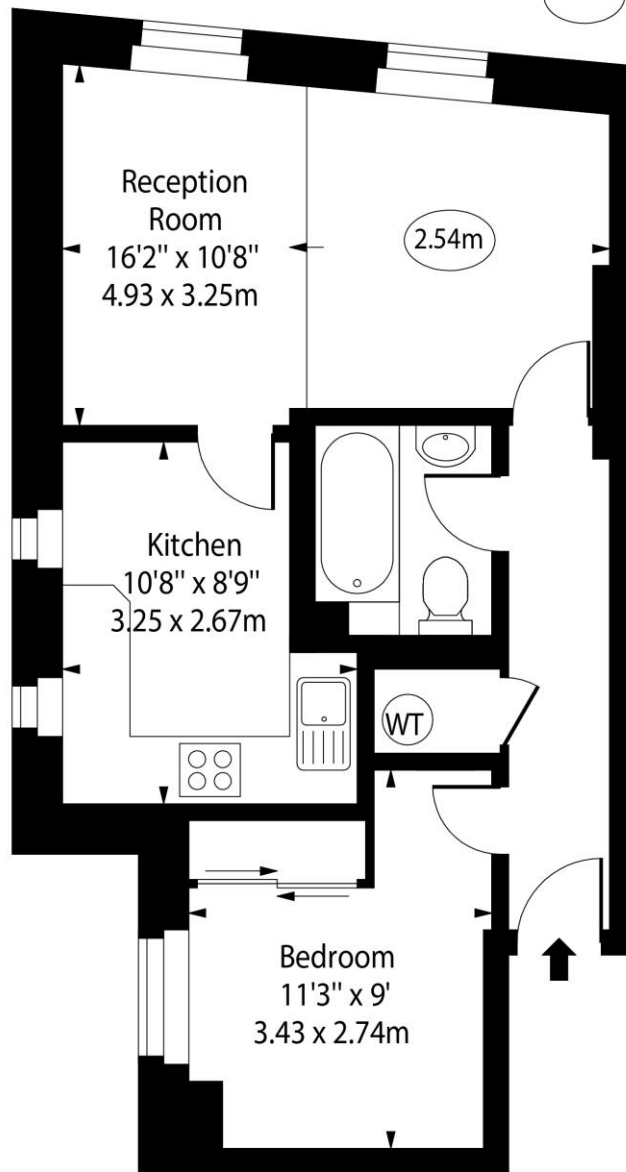
020 7357 7999

chestertons.co.uk

Arcadia Court, Old Castle Street, E1



○ - Ceiling Height



Second Floor

Approx Gross Internal Area 448 Sq Ft - 41.62 Sq M

For Illustration Purposes Only - Not To Scale

www.goldlens.co.uk

Ref. No. 026450K

