



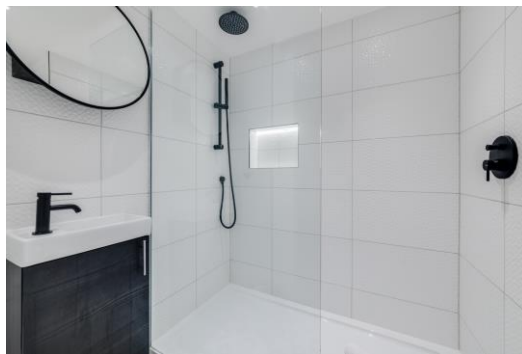
Arcadia Court

45 Old Castle Street, E1

Asking Price £425,000

Stunning One-Bedroom Apartment in Historic Arcadia Court, Moments from Liverpool Street and Spitalfields

CHESTERTONS



Arcadia Court

45 Old Castle Street, E1

- One Bedroom
- One Bathroom
- Leasehold
- Communal Garden
- Great Location
- Excellent Transport Links



Recently refurbished and absolutely stunning one-bedroom apartment, set within the historic Arcadia Court (formerly Wentworth Dwellings), offers a perfect blend of period charm and contemporary living. The apartment features a beautiful bedroom, a well-proportioned and sophisticated living room, a fully equipped separate kitchen, and a modern bathroom, all the rooms with large windows flooding the space with natural light. Residents also enjoy access to a communal courtyard with stunning views of London's skyline.

Located just south of Spitalfields and on the edge of the City, this property is ideally situated for easy access to local amenities, including Spitalfields Market, Brick Lane, and a host of restaurants, bars, and boutiques. Excellent transport links include Aldgate and Liverpool Street Station (with multiple Underground lines and National Rail services) ensuring fast and convenient connections across London.

Tenure: Leasehold 91 years 8 months

Service Charge: £3686.65 pa

Ground Rent: £185 pa

Local Authority: Tower Hamlets

Council Tax Band: C

Energy Efficiency Rating		
	Current	Potential
Very energy efficient - lower running costs		
A (92-100)		
B (81-91)		
C (69-80)		69
D (55-68)		
E (39-54)	45	
F (21-38)		
G (1-20)		
Not energy efficient - higher running costs		
England, Scotland & Wales		EU Directive 2002/91/EC

Chestertons Tower Bridge Sales

220 Tower Bridge Road

Tower Bridge

London

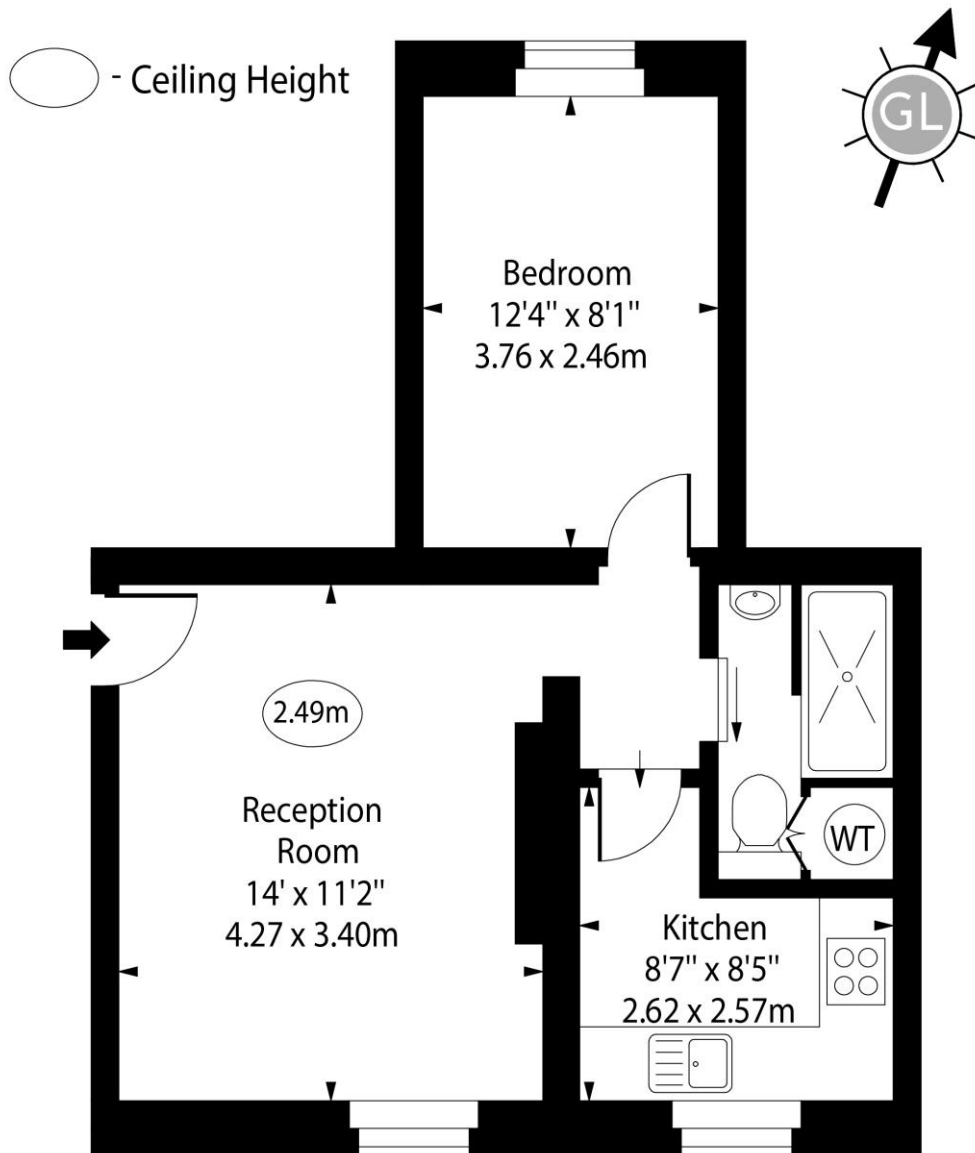
SE1 2UP

towerbridge@chestertons.co.uk

020 7357 7999

chestertons.co.uk

Arcadia Court, Old Castle Street, E1



Ground Floor

Approx Gross Internal Area 400 Sq Ft - 37.16 Sq M

For Illustration Purposes Only - Not To Scale

www.goldlens.co.uk

Ref. No. 026243K

