



New Tannery Way

London, SE1

Asking Price £775,000

A stunning two-bedroom, two-bathroom apartment with a private balcony, situated within a unique converted former pickle factory. This exceptional property boasts a perfect blend of industrial charm and modern luxury, offering panoramic city views.



New Tannery Way

London, SE1

- Modern
- Two Bedrooms
- Two Bathrooms
- Balcony
- 4th Floor
- Leasehold
- Great Location
- Excellent Transport Links



Situated on the 4th floor, this spacious two double bedroom apartment is offered fully furnished. The accommodation comprises a large open plan reception/ kitchen, large balcony with views over the London Skyline, an en-suite to the main bedroom, further luxury bathroom and excellent storage space.

The development boasts fantastic amenities which include 12 hour concierge and resident's gym (once the gym is completed). The Pickle Factory is situated in the vibrant and trendy hub of Bermondsey / London Bridge, with Bermondsey Station and London Bridge Station within walking distance.

Available now.

Tenure: Leasehold 995 years 6 months

Service Charge: £5945 p.a

Ground Rent: £450 p.a

Local Authority: Southwark Council

Council Tax Band: E

Energy Efficiency Rating		
	Current	Potential
Very energy efficient - lower running costs		
(92-100) A		
(81-91) B	84	84
(69-80) C		
(55-68) D		
(39-54) E		
(21-38) F		
(1-20) G		
Not energy efficient - higher running costs		
England, Scotland & Wales		EU Directive 2002/91/EC

Chestertons Tower Bridge Sales

220 Tower Bridge Road

Tower Bridge

London

SE1 2UP

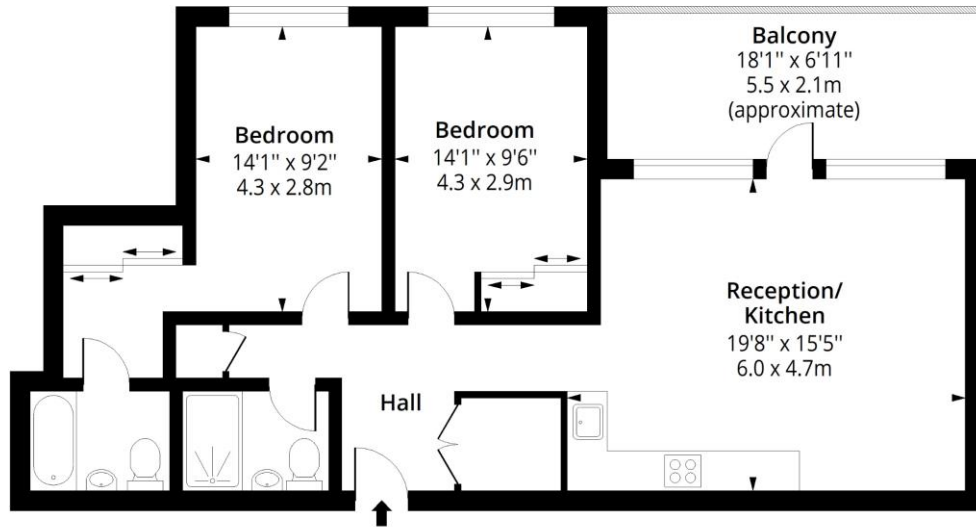
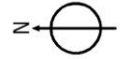
towerbridge@chestertons.co.uk

020 7357 7999

chestertons.co.uk

New Tannery Way, SE1

Approx. Gross Internal Area 827 Sq Ft - 76.83 Sq M
Approx. Gross Balcony Area 133 Sq Ft - 12.36 Sq M



Fourth Floor

Floor Area 827 Sq Ft - 76.83 Sq M



Measured according to RICS IPMS2. Floor plan is for illustrative purposes only and is not to scale. Every attempt has been made to ensure the accuracy of the floor plan shown, however all measurements, fixtures, fittings and data shown are an approximate interpretation for illustrative purposes only. 1 sq m = 10.76 sq feet.

lpaplus.com

Date: 9/8/2024



This paper is
100% recyclable