



Walworth Road

London, SE1

Asking Price £400,000

An exquisite one-bedroom flat situated on the 11th floor of the renowned Strata development, offering stunning West-facing views over London.



Walworth Road

London, SE1

- One Bedroom
- Open Plan Kitchen / Living Space
- Leasehold
- 11th Floor
- Concierge
- Lift
- Great Location
- Excellent Transport Links



The property has been meticulously finished to an exceptionally high standard, featuring premium fixtures and fittings throughout, including air conditioning. It boasts breath-taking west-facing views across London. Inside, you'll find a beautifully maintained apartment with a generous living room and bedroom, both offering spectacular vistas, as well as a sleek, modern bathroom.

Additional amenities include a 24-hour concierge service, CCTV security and cycle storage. This apartment sits in the heart of the dynamic Elephant and Castle regeneration area. It enjoys proximity to the diverse amenities of Elephant Park and Walworth Road and also benefits from excellent transport links via the nearby Elephant and Castle underground and mainline stations, all within easy walking distance.

Tenure: Leasehold 110 years
Service Charge: £4126 p.a
Ground Rent: £300 p.a
Local Authority: London Borough of Southwark
Council Tax Band: D

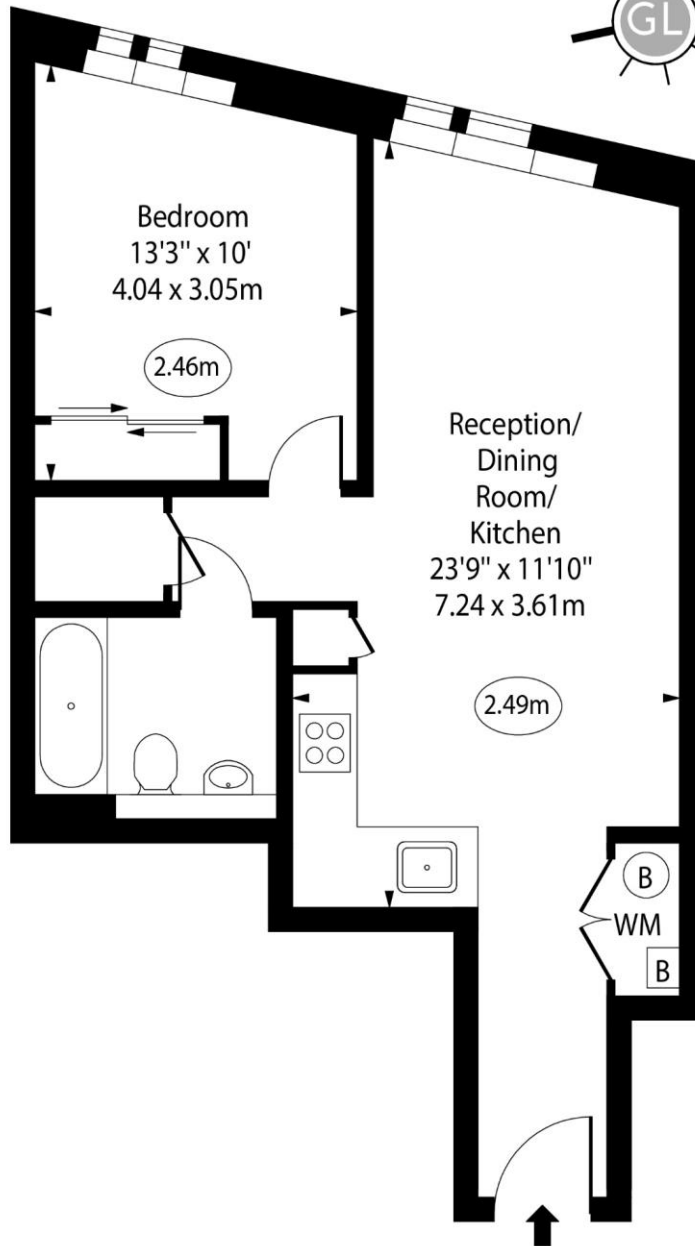
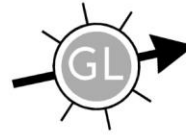
Energy Efficiency Rating		Current	Potential
Very energy efficient - lower running costs			
(92-100)	A		
(81-91)	B	82	82
(69-80)	C		
(55-68)	D		
(39-54)	E		
(21-38)	F		
(1-20)	G		
Not energy efficient - higher running costs			
England, Scotland & Wales		EU Directive 2002/91/EC	

Chestertons Tower Bridge Sales

220 Tower Bridge Road
 Tower Bridge
 London
 SE1 2UP
 towerbridge@chestertons.co.uk
 020 7357 7999
 chestertons.co.uk

Walworth Road, SE1

○ - Ceiling Height



Eleventh Floor

Approx Gross Internal Area 500 Sq Ft - 46.45 Sq M

For Illustration Purposes Only - Not To Scale

www.goldlens.co.uk

Ref. No. 025353M

