



Carter Street

London, SE17

Offers in excess of
£600,000

A stunning 3 bedroom period apartment located on the picturesque and quiet residential Carter Street. Spanning approximately 742 sq. ft., this charming property boasts three spacious double bedrooms, a separate kitchen, and a contemporary bathroom.



Carter Street

London, SE17

- Period Property
- Three Double Bedrooms
- Moments To Kennington Station
- Quiet Residential Street
- Close to Pasley and Kennington Park
- Bright & Spacious Throughout
- Separate Kitchen



Designed with both style and practicality in mind, the interior offers three generously sized, well-finished bedrooms, a modern bathroom, and a sleek, separate kitchen. The property exudes a sense of space, making it ideal for both relaxation and entertaining. A highlight of this home is the double-height ceilings and large sash windows, which flood the space with natural light, enhancing its period charm.

Conveniently located, the apartment is just a short walk from Kennington Station (Northern Line) and approximately a 15-minute walk to Elephant and Castle Station (Bakerloo, Northern lines, and Thameslink), providing excellent transport links into the city. For cyclists, the area offers numerous cycle routes. Additionally, it is moments from the tranquil Pasley Park and the award-winning Kennington Park.

Tenure: Leasehold
Service Charge: £0
Ground Rent: £0
Local Authority: Southwark Council
Council Tax Band: D

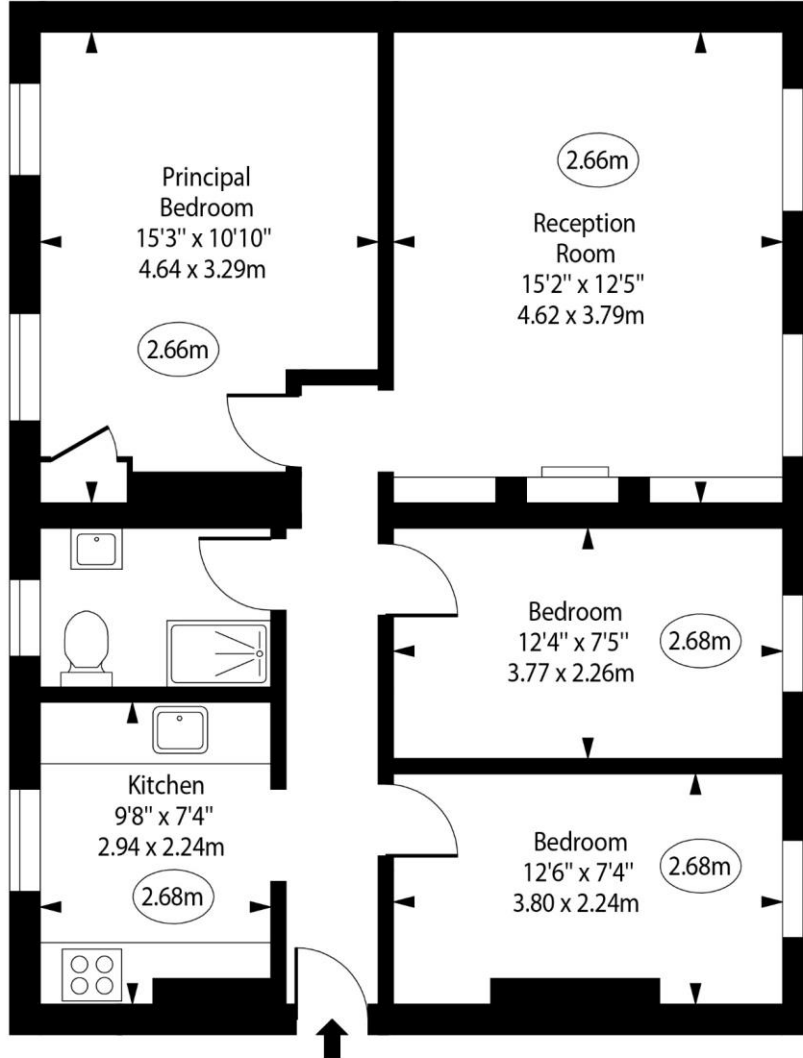
Energy Efficiency Rating		Current	Potential
Very energy efficient - lower running costs			
(92-100)	A		
(81-91)	B		82
(69-80)	C		
(55-68)	D	65	
(39-54)	E		
(21-38)	F		
(1-20)	G		
Not energy efficient - higher running costs			
England, Scotland & Wales		EU Directive 2002/91/EC	

Chestertons Tower Bridge Sales

220 Tower Bridge Road
 Tower Bridge
 London
 SE1 2UP
 towerbridge@chestertons.co.uk
 020 7357 7999
 chestertons.co.uk

Carter Street, SE17

○ - Ceiling Height



First Floor

Approx Gross Internal Area 742 Sq Ft - 68.93 Sq M

For Illustration Purposes Only - Not To Scale

www.goldlens.co.uk

Ref. No. 024944R

