

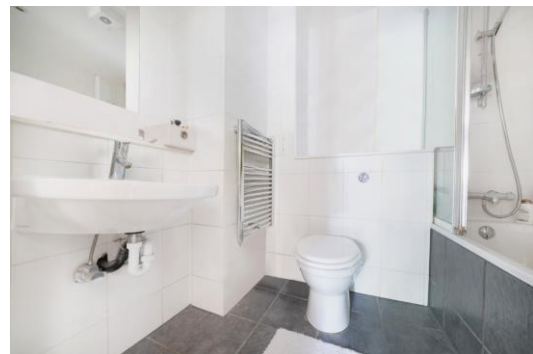


Grove Court

59 Peckham Grove, SE15

Asking Price £275,000

A bright and spacious ground 1st floor one bedroom apartment in a modern block on Peckham Grove, SE15. Ideal for an investor or first time buyer. The property is offered chain free.



Grove Court

59 Peckham Grove, SE15

- One Bedroom
- First Floor
- Long lease
- Modern block
- Chain free
- Security Entry System



This bright and airy one bedroom property is in excellent condition and is offered chain free. The property is comprised of a spacious living room, separate kitchen, double bedroom and bathroom with a three-piece bathroom suite. The property is perfect for young professionals buying their first home or for an investor as a buy to let.

Peckham Grove is conveniently located moments from the green expanses of Burgess Park and local amenities of Rye Lane, Peckham, which offers many shops, pubs, bars and restaurants. Queens Road Peckham Station offers excellent transport links via Overground and National Rail while Peckham Rye mainline offers frequent rail links into links into Central London. An array of local buses are easily accessible from Southampton Way, Sumner Road and The Old Kent Road.

Tenure: Leasehold 974 years 11 months
Service Charge: £2296 p.a
Ground Rent: £200 p.a
Local Authority: London Borough of Southwark
Council Tax Band: B

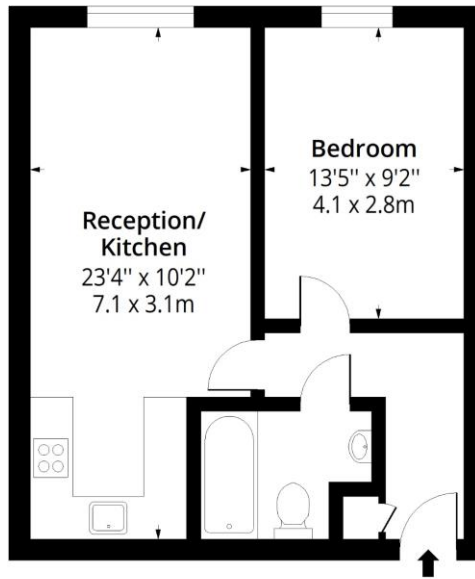
Energy Efficiency Rating		Current	Potential
Very energy efficient - lower running costs			
(92-100)	A		
(81-91)	B	81	85
(69-80)	C		
(55-68)	D		
(39-54)	E		
(21-38)	F		
(1-20)	G		
Not energy efficient - higher running costs			
England, Scotland & Wales		EU Directive 2002/91/EC	

Chestertons Tower Bridge Sales

220 Tower Bridge Road
 Tower Bridge
 London
 SE1 2UP
 towerbridge@chestertons.co.uk
 020 7357 7999
 chestertons.co.uk

Grove Court, SE15

Approx. Gross Internal Area 473 Sq Ft - 43.94 Sq M



First Floor

Floor Area 473 Sq Ft - 43.94 Sq M



Measured according to RICS IPMS2. Floor plan is for illustrative purposes only and is not to scale. Every attempt has been made to ensure the accuracy of the floor plan shown, however all measurements, fixtures, fittings and data shown are an approximate interpretation for illustrative purposes only. 1 sq m = 10.76 sq feet.

lpaplus.com

Date: 5/7/2024

