



Capital Wharf

50 Wapping High Street, E1W

Offers in excess of

An exquisite south-facing two-bedroom apartment, ideally located on the second floor and spanning over 1000 sq. ft. This bright and spacious home features a generous balcony that offers breath taking views of Tower Bridge and the River Thames.



Capital Wharf

50 Wapping High Street, E1W

- Two bedrooms
- Two bathrooms
- Balcony
- Over 1000 sq. ft.
- Leasehold
- Stunning riverside views
- Allocated parking
- Great location
- Excellent transport links



This exceptional residence blends modern living with a prime riverside location, offering a unique opportunity to experience the best of London living.

The open-plan reception room serves as the heart of the home, seamlessly flowing onto the expansive balcony, perfect for soaking in the picturesque south-facing water side panorama. The kitchen is fully equipped with high-quality appliances, worktops and ample storage. Both bedrooms are a good size with the principal bedroom enhanced by a beautifully appointed en suite bathroom. The apartment also features a well-appointed guest bathroom and a practical storage cupboard off the hallway, ensuring all your storage needs are met.

The property benefits from a 24-hour porter, secure car parking, and communal gym facilities. Capital Wharf is a sought-after development located on the banks of the River Thames, close to the amenities of St Katharine Docks, as well as an array of riverside eateries and bespoke local coffee houses.

Tenure: Leasehold 971 years 4 months
Service Charge: £8000 pa
Ground Rent: £320 pa
Local Authority: Tower Hamlets
Council Tax Band: G

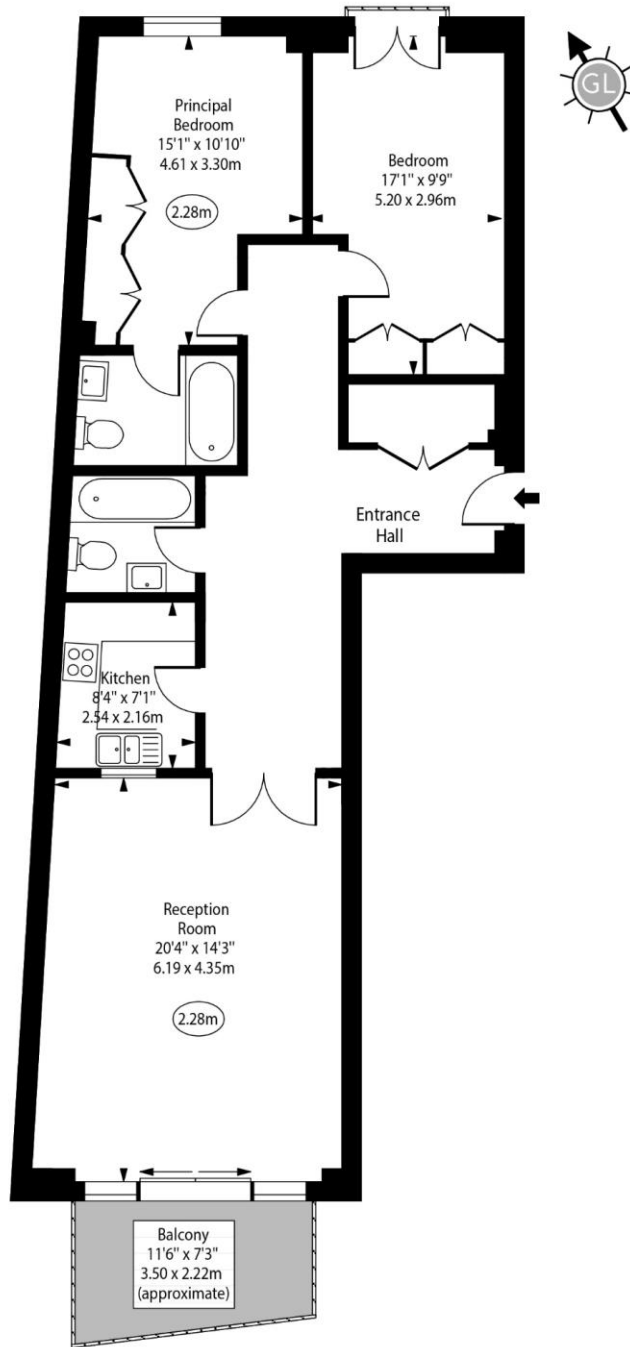
Energy Efficiency Rating		Current	Potential
Very energy efficient - lower running costs			
(92-100)	A		
(81-91)	B	81	83
(69-80)	C		
(55-68)	D		
(39-54)	E		
(21-38)	F		
(1-20)	G		
Not energy efficient - higher running costs			
England, Scotland & Wales		EU Directive 2002/91/EC	

Chestertons Tower Bridge Sales

220 Tower Bridge Road
 Tower Bridge
 London
 SE1 2UP
 towerbridge@chestertons.co.uk
 020 7357 7999
 chestertons.co.uk

Capital Wharf,
Wapping High Street, E1W

○ - Ceiling Height



Second Floor

Approx Gross Internal Area 1012 Sq Ft - 94.01 Sq M

For Illustration Purposes Only - Not To Scale
www.goldlens.co.uk
Ref. No. 024704R