



# Zeno Court

19 Long Walk, SE1

Asking Price £600,000

A stylish two-bedroom split level apartment in a modern development moments from the fashionable Bermondsey Street.

**CHESTERTONS**



# Zeno Court

## 19 Long Walk, SE1

- Two Bedroom
- One bathroom
- Separate W.C.
- Balcony
- Modern
- Duplex
- Ground & first floor



A stylish and beautifully presented two-bedroom duplex apartment on the ground and first floor of a modern residential development.

The ground floor level provides a substantial entrance hallway, two double bedrooms and separate W.C. The first floor provides a large reception room with floor to ceiling glass that floods the space with natural light and provides access to a south facing balcony. The semi open plan kitchen is fitted with gloss cabinets, integrated appliances and a breakfast bar. The family bathroom is tiled and fitted with a three-piece suite.

Zeno Court is ideally located for quick and easy access to Bermondsey Street, Maltby Street market, Tanner Street Park, Shad Thames, Bermondsey Square and Borough Market. Nearby transport links at London Bridge and Bermondsey Stations provide access for Jubilee and Northern underground lines plus National Rail. The apartment will come with a new 999 year lease as well as the remainder of the building warranty.

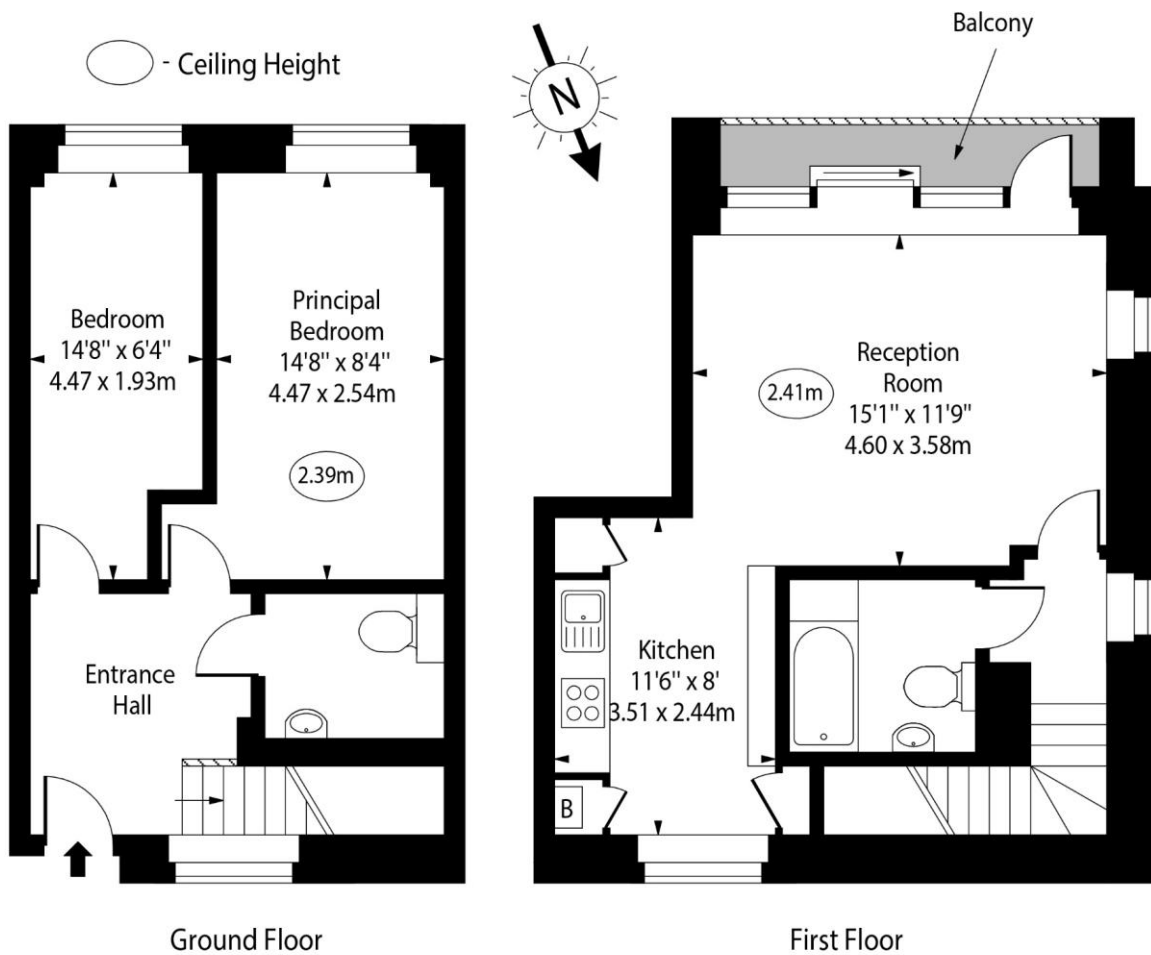
**Tenure:** Leasehold 999 years  
**Service Charge:** £2284.5 pa  
**Ground Rent:** £750 pa  
**Local Authority:** Southwark Council  
**Council Tax Band:** E

Energy Efficiency Rating		Current	Potential
Very energy efficient - lower running costs			
(92-100)	A		
(81-91)	B	81	81
(69-80)	C		
(55-68)	D		
(39-54)	E		
(21-38)	F		
(1-20)	G		
Not energy efficient - higher running costs			
England, Scotland & Wales		EU Directive 2002/91/EC	

### *Chestertons Tower Bridge Sales*

220 Tower Bridge Road  
 Tower Bridge  
 London  
 SE1 2UP  
 towerbridge@chestertons.co.uk  
 020 7357 7999  
 chestertons.co.uk

## Zeno Court, Long Walk, SE1



Approx Gross Internal Area      810 Sq Ft - 75.25 Sq M

For Illustration Purposes Only - Not To Scale