

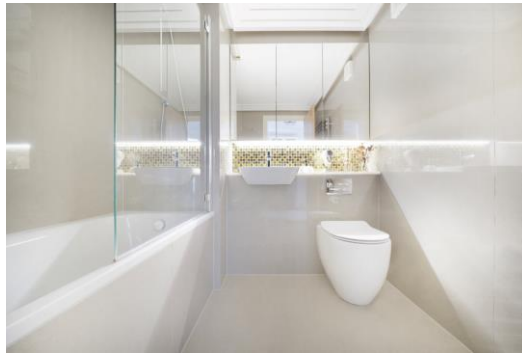


Globe Wharf

205 Rotherhithe Street, SE16

Asking Price £475,000

A recently redecorated one-bedroom apartment in a stunning riverside warehouse development. This apartment features a kitchen/reception room with access to a private balcony offering side river views, a double bedroom a modern bathroom and parking.



Globe Wharf

205 Rotherhithe Street, SE16

- One bedroom
- Converted Warehouse
- Riverview's
- Underground parking space
- 24hr Concierge
- Gym facilities and pool
- Original features



The apartment showcases exposed brickwork, original cast iron columns, wooden flooring and a carpeted bedroom with a built-in wardrobe. A bright and spacious open-plan kitchen/reception room that opens onto a private balcony with river views. The property also comes with its very own private allocated parking space.

Originally a rice warehouse over 160 years ago, this beautiful Grade II listed development on the River Thames is highly sought after, retaining much of its original character and features.

Amenities include a concierge, swimming pool, Jacuzzi, sauna, and gym.

Globe Wharf boasts an enviable location in Rotherhithe on the south bank of the River Thames, situated between Tower Bridge and Canary Wharf. It is within walking distance to the Jubilee and Overland train lines, providing excellent links to Central London and Canary Wharf.

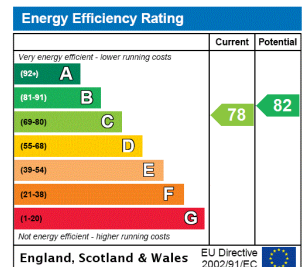
Tenure: Leasehold 97 years 8 months

Service Charge: £3281p.a (Service charge £2439.70 PA and reserve fund £842.56)

Ground Rent: £100 p.a

Local Authority: London Borough of Southwark

Council Tax Band: D



Chestertons Tower Bridge Sales

220 Tower Bridge Road

Tower Bridge

London

SE1 2UP

towerbridge@chestertons.co.uk

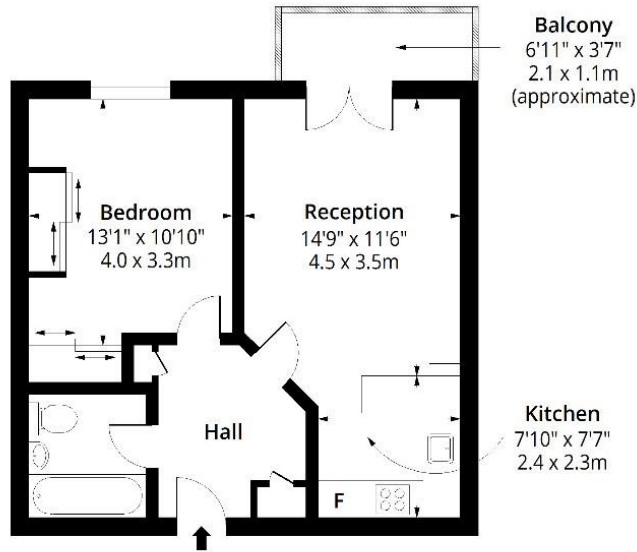
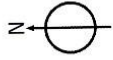
020 7357 7999

chestertons.co.uk

Globe Wharf, Rotherhithe Street, SE16

Approx. Gross Internal Area 528 Sq Ft - 49.05 Sq M

Approx. Gross Balcony Area 37 Sq Ft - 3.44 Sq M



Third Floor

Floor Area 528 Sq Ft - 49.05 Sq M



Measured according to RICS IPMS2. Floor plan is for illustrative purposes only and is not to scale. Every attempt has been made to ensure the accuracy of the floor plan shown, however all measurements, fixtures, fittings and data shown are an approximate interpretation for illustrative purposes only. 1 sq m = 10.76 sq feet.

lpaplus.com

Date: 19/7/2024

Chesterton Global Ltd trading as Chestertons for themselves and for the vendor of this property whose agents they are, give notice that (i) these particulars do not constitute any part of an offer or contract, (ii) all statements contained within these particulars are made without responsibility on the part of Chestertons or the vendor, (iii) whilst made in good faith, none of the statements contained within these particulars are to be relied upon as a statement or representation of fact, (iv) any intending purchasers must satisfy themselves by inspection or otherwise as to the correctness of each of the statements contained within these particulars, (v) the vendor does not make or give either Chestertons or any person in their employment any authority to make or give representation or warranty whatsoever in relation to this property. Wide angle lenses may be used. ©Copyright Chestertons | Chesterton Global Ltd | Registered Office 40 Connaught Street, Hyde Park, London W2 2AB Registered Company Number 05334580.



This paper is 100% recyclable