



Great Tower Street

London, EC3R

Asking Price £800,000

Spectacular one bedroom apartment in the historic, grade II listed, Christ Hospital building by The Tower of London.

CHESTERTONS



Great Tower Street

London, EC3R

- One Bedroom
- Two Bathroom
- Open Plan Kitchen / Living Space
- Leasehold
- Grade II Listed Building
- Great Location
- Excellent Transport Links



High ceilings and large sash windows flood this stunning one-bedroom apartment with natural light. The property boasts a generous principle bedroom with en suite bathroom, a separate family bathroom, an open-plan kitchen/living area and plenty of storage throughout. Given it's size, the apartment can easily be converted to have an additional bedroom or study.

Situated in the former Christ Hospital building, this property is steeped in history and character, offering a unique living experience in one of London's most desirable locations. Positioned opposite the Tower of London and close to the banks of the Thames, it enjoys excellent transport links, including Monument / Bank and Tower Hill tube; Fenchurch St, London Bridge and Liverpool St stations; Tower Gateway DLR; and the Thames Clipper plus numerous bus routes. With its proximity to Spitalfields and the City, this apartment perfectly balances historic charm and modern convenience.

Tenure: Leasehold 97 years 10 months

Service Charge: £4589.02 pa

Ground Rent: £300 pa

Local Authority: City Of London

Council Tax Band: F

Energy Efficiency Rating		Current	Potential
Very energy efficient - lower running costs			
(92-)	A		
(81-91)	B	81	81
(69-80)	C		
(55-68)	D		
(39-54)	E		
(21-38)	F		
(1-20)	G		
Not energy efficient - higher running costs			
England, Scotland & Wales		EU Directive 2002/91/EC	

Chestertons Tower Bridge Sales

220 Tower Bridge Road

Tower Bridge

London

SE1 2UP

towerbridge@chestertons.co.uk

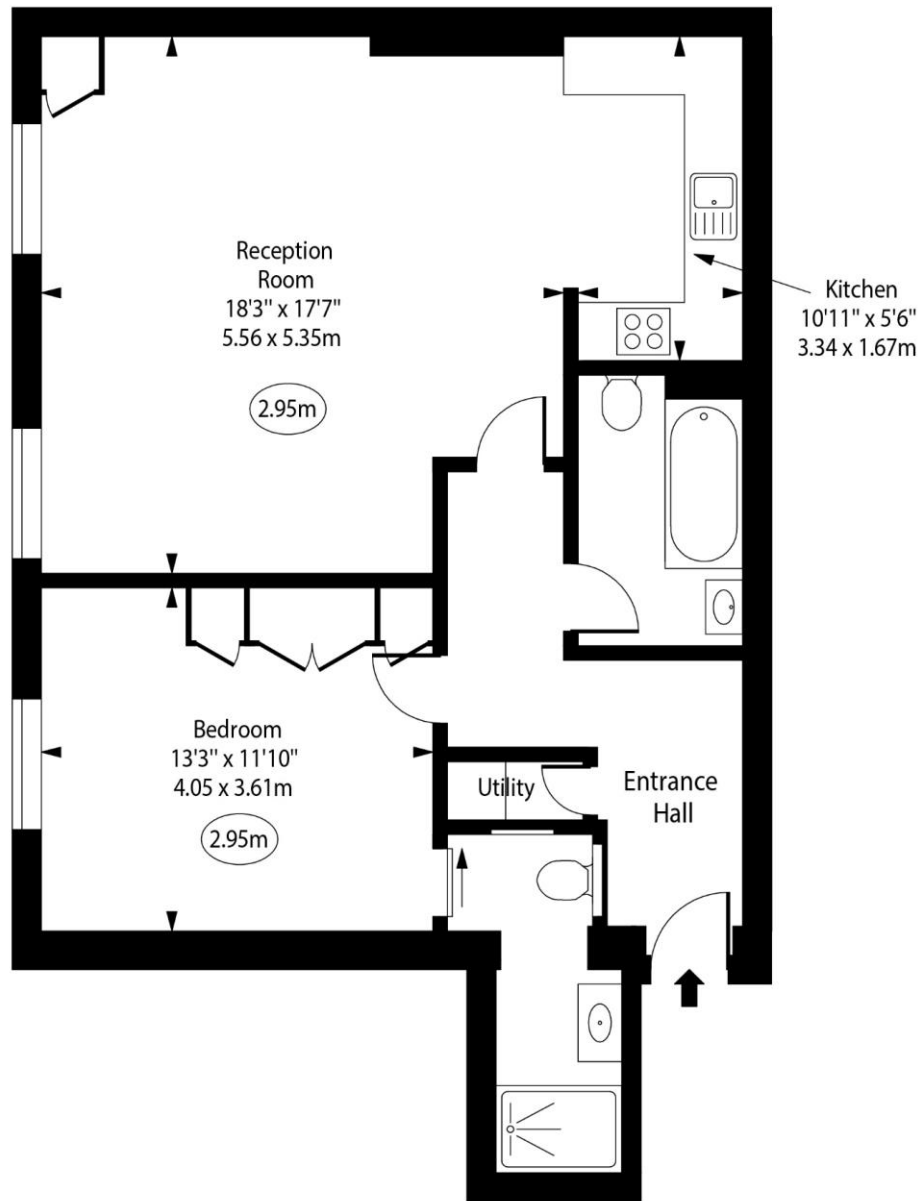
020 7357 7999

chestertons.co.uk

Great Tower Street, EC3R



○ - Ceiling Height



Third Floor

Approx Gross Internal Area 760 Sq Ft - 70.60 Sq M

For Illustration Purposes Only - Not To Scale

www.goldlens.co.uk

Ref. No. 024357R

