



Exchange Building

Commercial Street, E1

Offers in excess of
£900,000

The property offers an open-plan kitchen/reception, two double bedrooms and two contemporary style bathrooms includes underground parking space. It's virtually opposite Spitalfields Market and just a short walk from Liverpool Street.



Exchange Building

Commercial Street, E1

- Two Bedrooms
- Two Bathrooms
- Leasehold
- Concierge
- Underground Parking
- Opposite Spitalfields Market
- Short Walk from Liverpool Street Station



As you enter this remarkable apartment, you are greeted by a spacious open-plan kitchen and reception area. The design emphasizes modern elegance with double-height ceilings and sleek wood flooring throughout. The kitchen is fully equipped with contemporary appliances and ample storage, making it ideal for both cooking and entertaining. The property features two generously sized double bedrooms. The master bedroom boasts an en-suite bathroom, while the second bedroom has access to another well-appointed contemporary bathroom. Both bathrooms are finished to the highest standards, featuring modern fixtures and fittings. In addition to its stunning interior, this apartment includes a secure underground parking space.

The Exchange Building itself is renowned for its prestigious status and superb location. Situated virtually opposite Spitalfields Market and just a short walk from Liverpool Street, residents can enjoy a vast array of amenities right on their doorstep. This prime location is ideal for professionals seeking easy access to The City and vibrant East London.

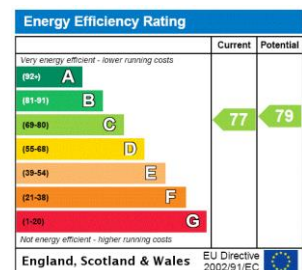
Tenure: Leasehold 971 years 8 months

Service Charge: £6286.56 pa

Ground Rent: £300 pa

Local Authority: Tower Hamlets

Council Tax Band: F



Chestertons Tower Bridge Sales

220 Tower Bridge Road

Tower Bridge

London

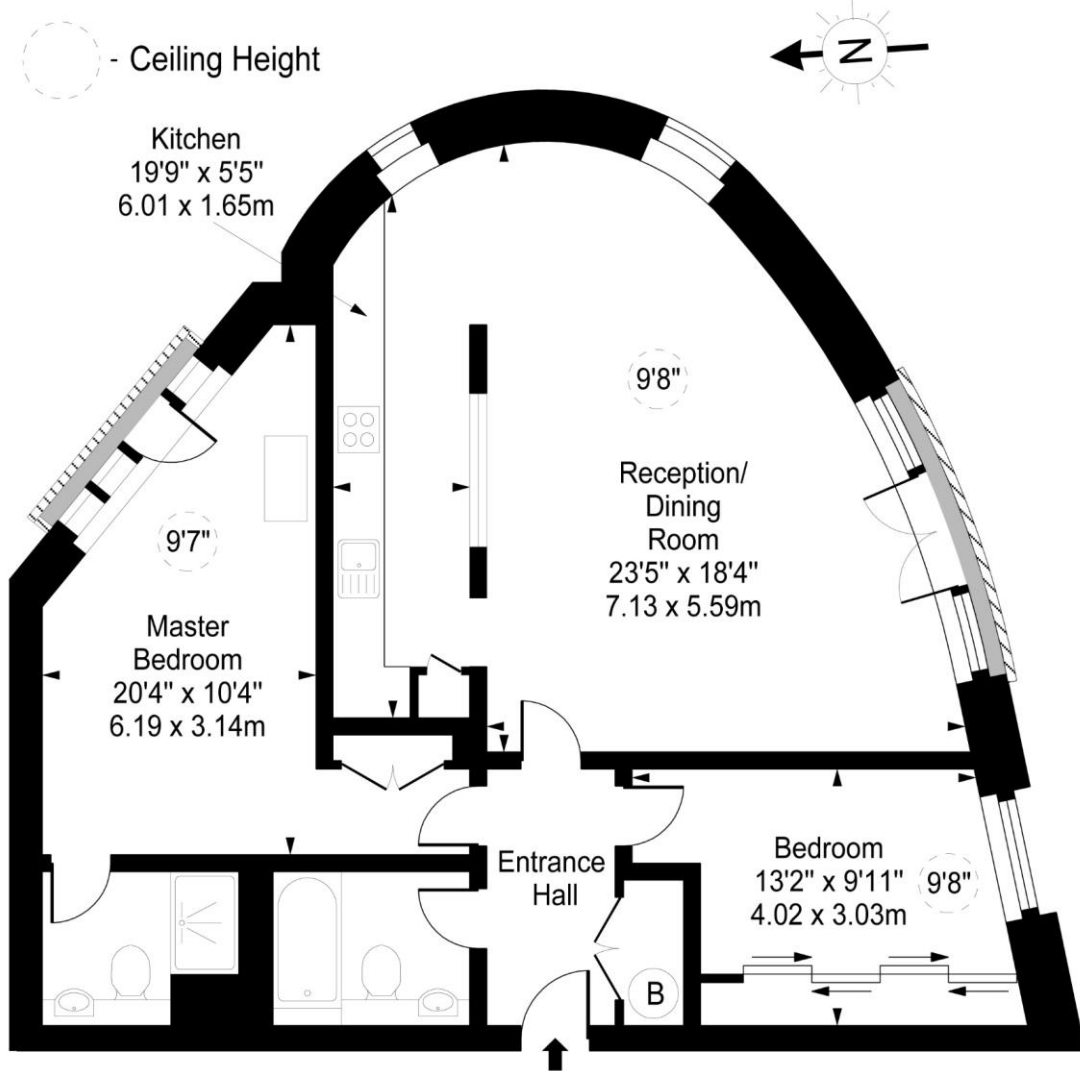
SE1 2UP

towerbridge@chestertons.co.uk

020 7357 7999

chestertons.co.uk

Exchange Building, Commercial Street, E1



Second Floor

Approx Gross Internal Area **988 Sq Ft - 91.78 Sq M**

For Illustration Purposes Only - Not To Scale

www.goldlens.co.uk
Ref. No. 012699AG

