



Providence Square

London, SE1

Offers in excess of
£900,000

A truly wonderful two bedroom, two bathroom apartment with a serene open decked patio that overlooks a meticulously maintained Japanese water garden.

CHESTERTONS



Providence Square

London, SE1

- Two Double Bedroom
- Two Bathrooms
- Private Waterside Patio
- Share of Freehold
- Outstanding 24hr Concierge Service
- Gym Facilities
- Private Parking
- Excellent Transport Links



This apartment offers two double bedrooms, two bathrooms and boasts a stunning waterside wooden decked patio with superb views of the Japanese water gardens and is very rare to come to market. The apartment is set in a private gated development within close proximity to Tower Bridge and Bermondsey tube stations. The rooms are filled with an abundance of natural light with a spacious corner aspect living room, which opens out to a Japanese water garden. The master bedroom features an en-suite and built in wardrobes. There is a separate kitchen, second double bedroom and second bathroom.

Providence Square is a secure gated development just off Shad Thames where residents benefit from 24-hour concierge/porter and gym facilities, leisure facilities such as sauna as well as the use of the beautiful Japanese Water Gardens. The area is home to London's most iconic landmark, Tower Bridge and is within the vicinity of many attractions such as The Shard, Bridge Theatre, Tate Modern and Tower of London. Shad Thames and One Tower Bridge boast a variety of bars, restaurants, cafes and shops. Providence Square is also within close proximity to, Bermondsey Street, Maltby Street & Borough Markets. Although The City is within walking distance, the has excellent transport links via Bermondsey tube, London Bridge Station, Tower Hill Tube, Thames Clipper and Tower Gateway DLR.

Tenure: Share of Freehold 971 years 1 months

Service Charge: £4500 pa

Ground Rent: £0 Peppercorn

Local Authority: London Borough of Southwark

Council Tax Band: G

Chestertons Tower Bridge Sales

220 Tower Bridge Road

Tower Bridge

London

SE1 2UP

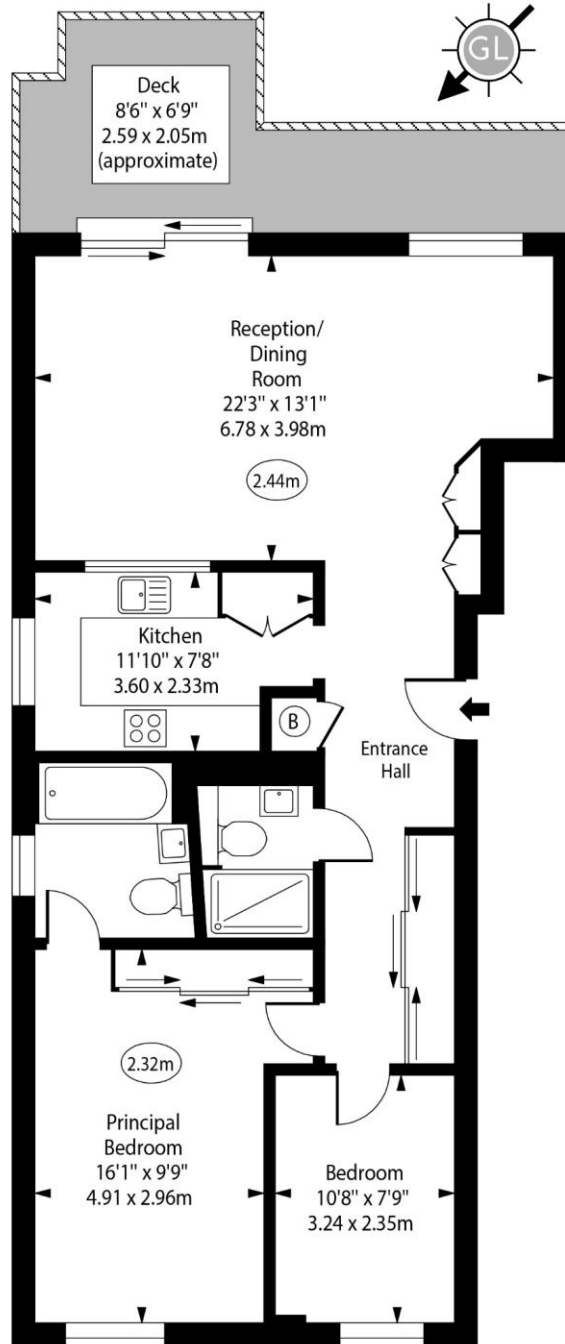
towerbridge@chestertons.co.uk

020 7357 7999

chestertons.co.uk

Providence Square, SE1

○ - Ceiling Height



Ground Floor

Approx Gross Internal Area 870 Sq Ft - 80.82 Sq M

For Illustration Purposes Only - Not To Scale

www.goldlens.co.uk

Ref. No. 024176J

Chesterton Global Ltd trading as Chestertons for themselves and for the vendor of this property whose agents they are, give notice that (i) these particulars do not constitute any part of an offer or contract, (ii) all statements contained within these particulars are made without responsibility on the part of Chestertons or the vendor, (iii) whilst made in good faith, none of the statements contained within these particulars are to be relied upon as a statement or representation of fact, (iv) any intending purchasers must satisfy themselves by inspection or otherwise as to the correctness of each of the statements contained within these particulars, (v) the vendor does not make or give either Chestertons or any person in their employment any authority to make or give representation or warranty whatsoever in relation to this property. Wide angle lenses may be used. ©Copyright Chestertons | Chesterton Global Ltd | Registered Office 40 Connaught Street, Hyde Park, London W2 2AB Registered Company Number 05334580.



This paper is
100% recyclable