



Hermitage Court

Knightsen Street, E1W

Offers in excess of
£800,000

A stunning two bedroom, two bathroom apartment just moments from the river. Features master bedroom with en-suite, second bedroom and second bathroom, separate kitchen and spacious living room. Sold with Share of freehold and parking space.



Hermitage Court

Knighen Street, E1W

- Large Two Bedroom
- Two Bathrooms
- Separate Kitchen
- Stunning Views Of The City
- Parking Space
- Concierge
- 1000+ Sq/ft



This third floor apartment is bright with well-proportioned rooms throughout. Features include a master bedroom with built in wardrobes, floor to ceiling windows and en-suite shower, a second double bedroom and second bathroom. The kitchen is separate, modern and fully equipped and the living room has floor to ceiling windows that offer beautiful views towards the city.

Residents benefit from a day porter, lift, communal terrace, share of freehold and sold with an allocated parking space

Hermitage Court is within close proximity to St Katharine Docks, historic Riverside Pubs, Waitrose and the River Thames.

Transport links include Wapping Overground, Tower Hill Tube and Tower Gateway DLR.

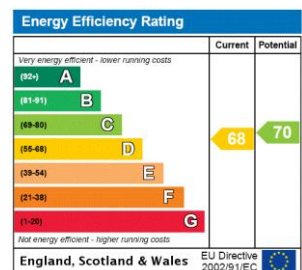
Tenure: Share of Freehold 987 years 7 months

Service Charge: £6045 p.a

Ground Rent: £0 Peppercorn

Local Authority: Tower Hamlets

Council Tax Band: F



Chestertons Tower Bridge Sales

220 Tower Bridge Road

Tower Bridge

London

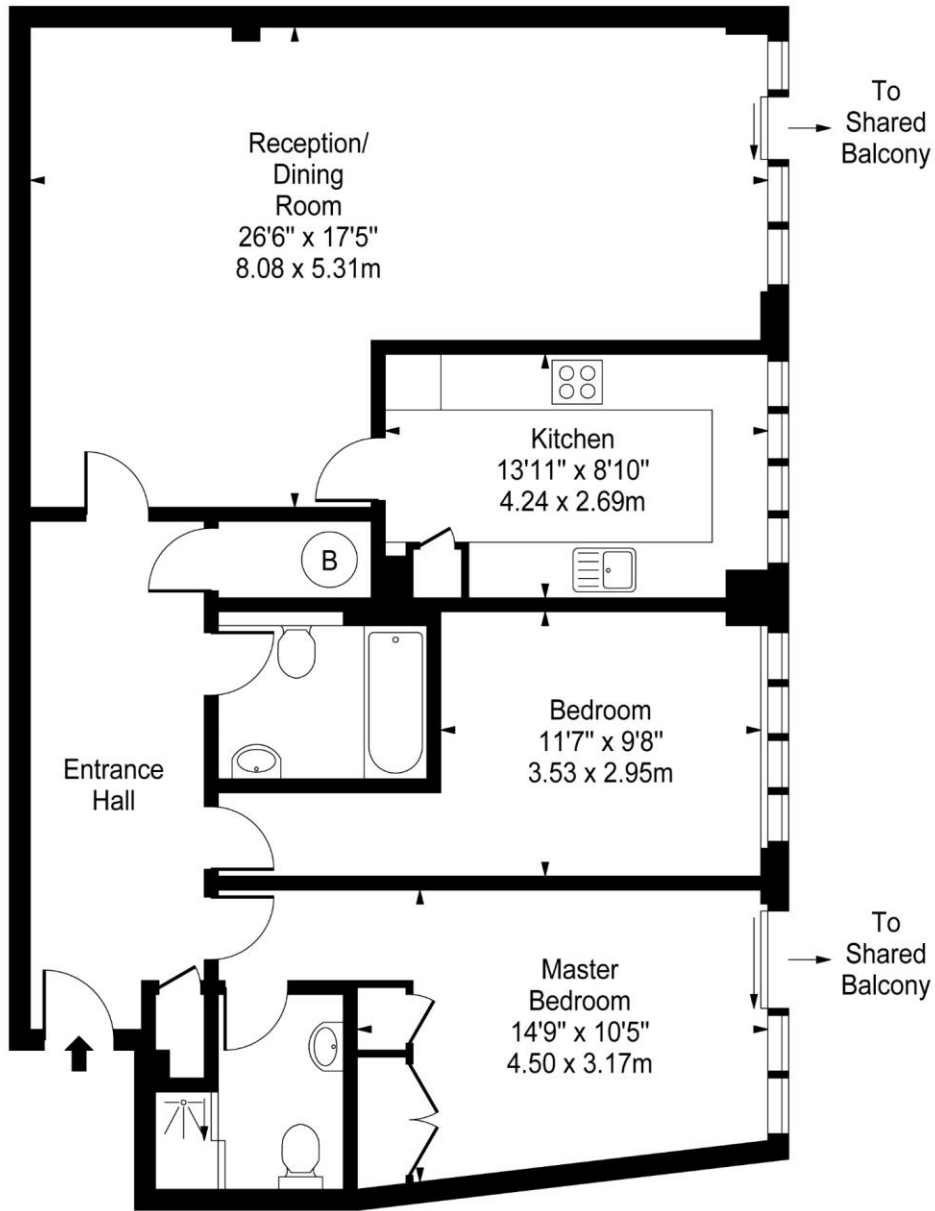
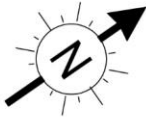
SE1 2UP

towerbridge@chestertons.co.uk

020 7357 7999

chestertons.co.uk

Hermitage Court, Knightsen Street, E1W



Third Floor

Approx Gross Internal Area **1064 Sq Ft - 98.85 Sq M**

For Illustration Purposes Only - Not To Scale

www.goldlens.co.uk

Ref. No. 008272Ga

