



# Tamarind Court

18 Gainsford Street, SE1

Offers in excess of  
£900,000

A large three bedroom apartment on the first floor of this converted warehouse in Shad Thames. The property features wooden flooring, separate kitchen, large bedrooms, bathroom and spacious living room. Sold with long lease and allocated parking.

CHESTERTONS



# Tamarind Court

18 Gainsford Street, SE1

- Three Bedrooms
- Two Bathrooms
- 1100 sqft
- Long Lease
- Warehouse Conversion
- Allocated Parking
- Great Location
- Excellent Transport Links

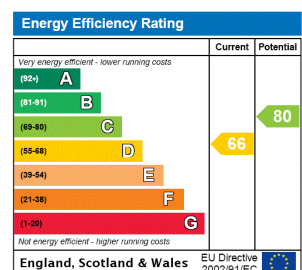


A spacious three bedroom apartment in a popular Shad Thames converted warehouse. The apartment has generous proportions throughout and features include a principle bedroom with en-suite, separate fully fitted kitchen and large living room. Sold with an allocated parking space.

The location of the property is close to the banks of the River Thames and moments from the pubs, cafes and restaurants of Shad Thames and within close proximity to One Tower Bridge, Bermondsey Street, Maltby Street Market, Borough Market and St Katharine Docks and the City of London.

Transport links at London Bridge Station, Bermondsey Tube, Tower Hill Tube , Tower Gateway DLR and Thames Clipper.

**Tenure:** Leasehold 972 years 3 months  
**Service Charge:** £5000 pa  
**Ground Rent:** £150 pa  
**Local Authority:** London Borough of Southwark  
**Council Tax Band:** F



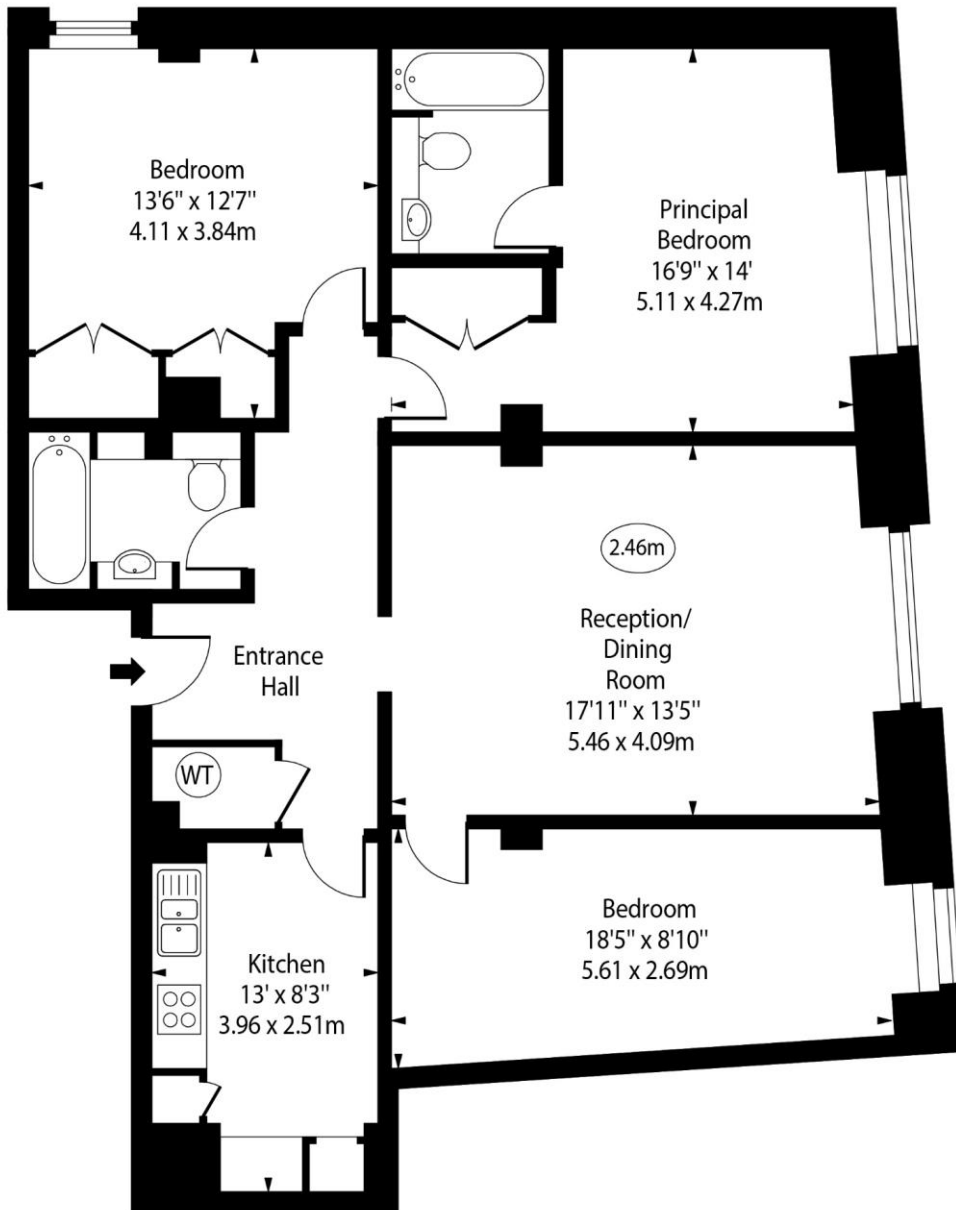
### Chestertons Tower Bridge Sales

220 Tower Bridge Road  
 Tower Bridge  
 London  
 SE1 2UP  
 towerbridge@chestertons.co.uk  
 020 7357 7999  
 chestertons.co.uk

Tamarind Court,  
Gainsford Street, SE1



○ - Ceiling Height



First Floor

Approx Gross Internal Area 1100 Sq Ft - 102.19 Sq M

For Illustration Purposes Only - Not To Scale

[www.goldlens.co.uk](http://www.goldlens.co.uk)

Ref. No. 023847K

