



Malmo Tower

Bailey Street, SE8

Offers in excess of
£425,000

A beautiful and bright one bedroom apartment with a balcony on the sixth floor of a modern residential tower. Residents benefit from a concierge, communal gardens and a gymnasium.



Malmo Tower

Bailey Street, SE8

- One Bedroom
- Leasehold
- Balcony
- Concierge
- Gym
- Lift
- Great Location
- Excellent Transport Links



Nestled atop the sixth floor of the esteemed Malmo Tower, this exquisite one-bedroom apartment is a fusion of elegance and convenience and is a jewel within the opulent Greenland Place Development.

A testament to refined living, this residence welcomes you with an expansive open-plan living area seamlessly blending with a modern, impeccably designed kitchen. The spacious bedroom offers tranquility, while the luxurious three-piece bathroom invites indulgence. Adorned with underfloor heating, this beautiful apartment extends its allure to a generously sized private balcony, commanding breath-taking vistas of Canary Wharf within a sanctuary of serenity. Residents benefit from round-the-clock services of a dedicated concierge, meticulously landscaped gardens, and exclusive access to a well-appointed gymnasium.

Conveniently situated in close proximity to Surrey Quays' vibrant retail enclave, an array of dining options, and the bustling Canada Water Station, this residence ensures seamless connectivity to The City and beyond.

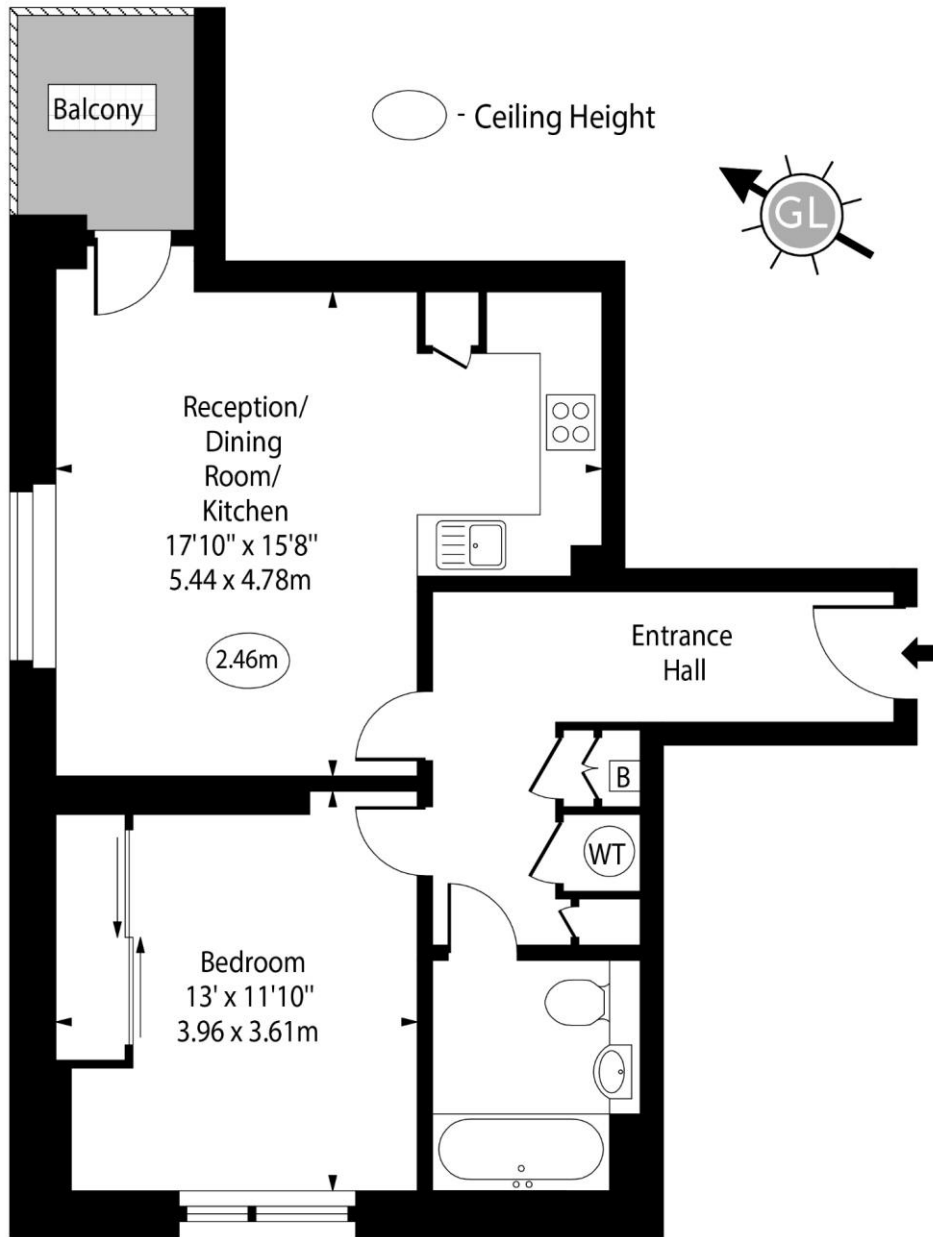
Tenure: Leasehold 987 years 7 months
Service Charge: £2596.38 pa
Ground Rent: £437.66 pa
Local Authority: London Borough of Lewisham
Council Tax Band: B

Energy Efficiency Rating		Current	Potential
Very energy efficient - lower running costs			
(92-100)	A		
(81-91)	B	85	85
(69-80)	C		
(55-68)	D		
(39-54)	E		
(21-38)	F		
(1-20)	G		
Not energy efficient - higher running costs			
England, Scotland & Wales		EU Directive 2002/91/EC	

Chestertons Tower Bridge Sales

220 Tower Bridge Road
 Tower Bridge
 London
 SE1 2UP
 towerbridge@chestertons.co.uk
 020 7357 7999
 chestertons.co.uk

Malmö Tower, Bailey Street, SE8



Sixth Floor

Approx Gross Internal Area 582 Sq Ft - 54.07 Sq M

For Illustration Purposes Only - Not To Scale

www.goldlens.co.uk

Ref. No. 023775K

