



# Glenrose Court

217 Long Lane, SE1

Offers in excess of  
£900,000

Beautiful and spacious two bedroom, two bathroom apartment offering over 1,200sqft of internal space and moments from Bermondsey Street.



# Glenrose Court

217 Long Lane, SE1

- Two Bedrooms
- Two Bathrooms
- Over 1,200sqft
- Leasehold
- Large Open Plan Kitchen / Living space
- Under Floor Heating Throughout
- Gated Development
- Great Location
- Excellent Transport Links



A stunning second floor two bedroom apartment located in a gated development moments from Bermondsey street. The apartment boasts two large double bedrooms, two bespoke designed bathrooms, spacious reception room, and open plan kitchen with modern integrated appliances plus an abundance of space. The property is finished to a high standard and has solid oak flooring throughout. The apartments are oriented around a private central courtyard which is quiet and secure.

Positioned on Long Lane, the apartment is within close proximity to London Bridge, Borough Market, plus the cafes, restaurants and bars of Bermondsey Street. Many of London's cultural institutions including Tate Modern, the Southbank Centre and Shakespeare's Globe Theatre are moments away.

The property is ideally located only minutes from both London Bridge and Borough stations and is surrounded by many wonderful and iconic amenities this desirable area has to offer.

**Tenure:** Leasehold 105 years 3 months  
**Service Charge:** £6063.72 pa  
**Ground Rent:** £250 pa  
**Local Authority:** London Borough of Southwark  
**Council Tax Band:** F

Energy Efficiency Rating		Current	Potential
Very energy efficient - lower running costs			
(92-100)	A		
(81-91)	B		
(69-80)	C	80	81
(55-68)	D		
(39-54)	E		
(21-38)	F		
(1-20)	G		
Not energy efficient - higher running costs			
England, Scotland & Wales		EU Directive 2002/91/EC	

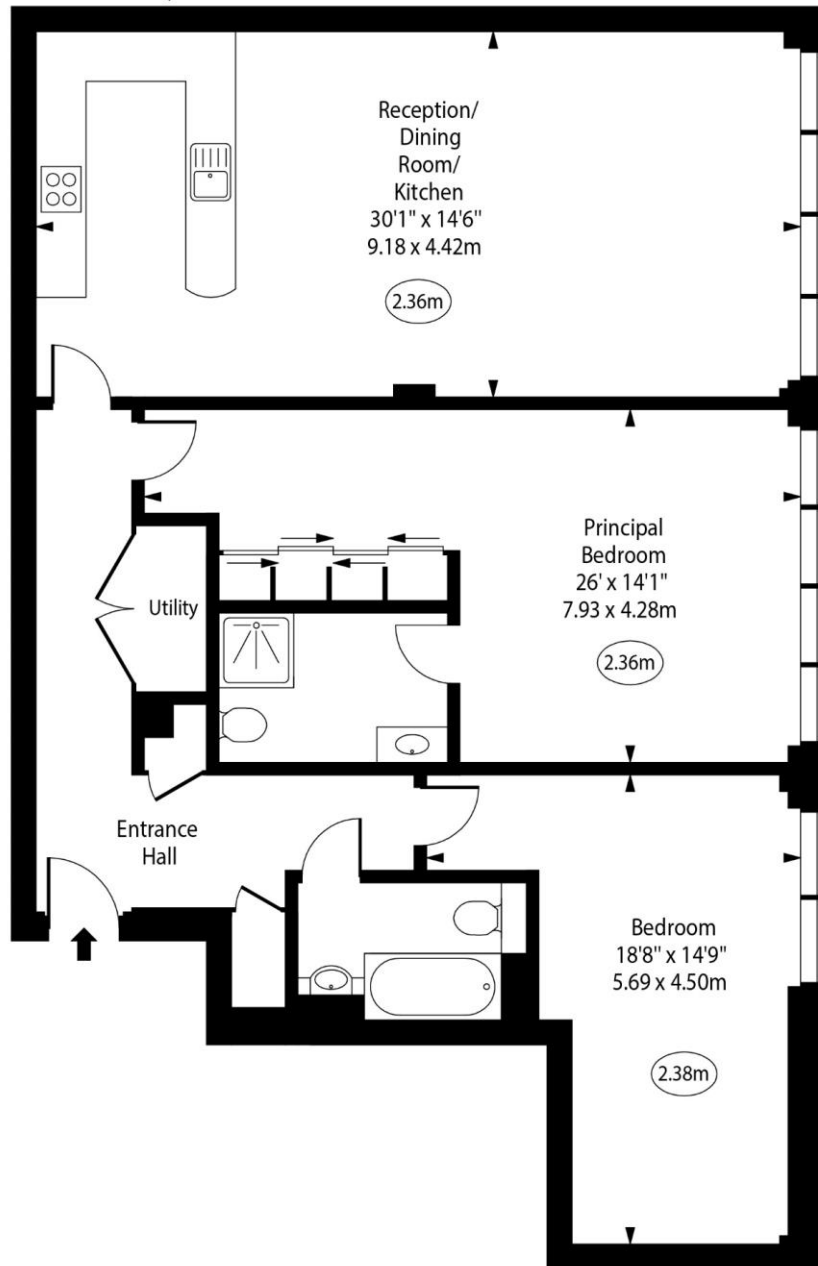
### Chestertons Tower Bridge Sales

220 Tower Bridge Road  
 Tower Bridge  
 London  
 SE1 2UP  
 towerbridge@chestertons.co.uk  
 020 7357 7999  
 chestertons.co.uk



# Glenrose Court, Long Lane, SE1

○ - Ceiling Height



Second Floor

Approx Gross Internal Area 1215 Sq Ft - 112.87 Sq M

For Illustration Purposes Only - Not To Scale

[www.goldlens.co.uk](http://www.goldlens.co.uk)

Ref. No. 023707R

