



# Scotts Sufferance Wharf

5 Mill Street, SE1

Offers in excess of  
£750,000

Remarkable two bedroom, two bathroom ground floor apartment with riverside patio within this very popular development on Mill Street.



# Scotts Sufferance Wharf

5 Mill Street, SE1

- Two Double Bedrooms
- Two Bathrooms
- Share Of Freehold
- Porter/Concierge Service
- Large Private Waterside Patio
- Secure Entry System
- EWS1 Certified
- Private Allocated Parking
- Chain Free
- Excellent Transport Links



Nestled within the historic Mill Street, this ground floor apartment boasts an expansive 723 square feet of refined living space. Situated within the esteemed confines of one of the area's premier gated developments, this residence offers a captivating blend of elegance and modern convenience.

The property comprises a well proportioned kitchen and reception room that leads out onto an expansive private waterside patio. Two lavish double bedrooms and two impeccably appointed bathrooms offer unparalleled comfort and privacy. Beyond the confines of this abode there is access to an additional communal terrace with spectacular riverside views. A dedicated concierge ensures seamless living, complemented by the convenience of secure underground parking.

Located in proximity to the vibrant array of bars and restaurants in Shad Thames, this residence epitomizes cosmopolitan living at its finest. Furthermore, with London Bridge, Bermondsey, and Tower Hill stations in close proximity, residents enjoy effortless connectivity to the bustling heart of the City, Canary Wharf, and the illustrious West End.

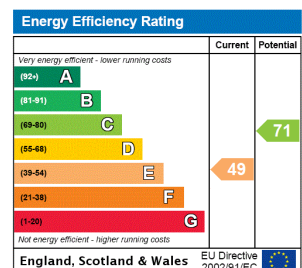
**Tenure:** Share of Freehold 90 years 2 months

**Service Charge:** £4500 p.a

**Ground Rent:** £0

**Local Authority:** Southwark Council

**Council Tax Band:** F



### Chestertons Tower Bridge Sales

220 Tower Bridge Road

Tower Bridge

London

SE1 2UP

towerbridge@chestertons.co.uk

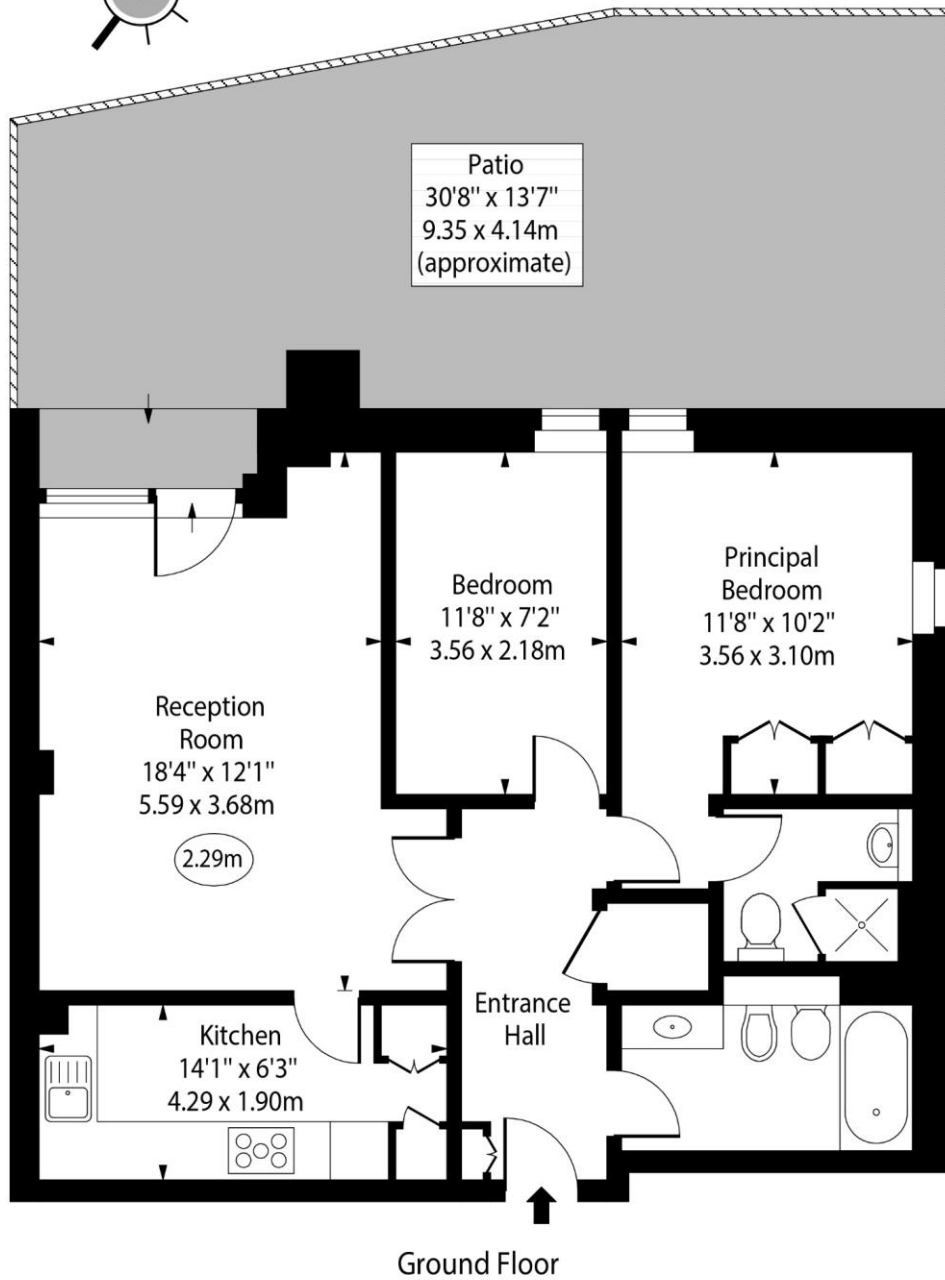
020 7357 7999

chestertons.co.uk

Scotts Sufferance Wharf,  
Mill Street, SE1



○ - Ceiling Height



Approx Gross Internal Area 723 Sq Ft - 67.17 Sq M

For Illustration Purposes Only - Not To Scale

[www.goldlens.co.uk](http://www.goldlens.co.uk)

Ref. No. 023621K

