



Anchor Brewhouse

50 Shad Thames, SE1

Offers in excess of
£850,000

Experience a rare opportunity to own a unique sub penthouse apartment offering breath-taking views of the River Thames and London's iconic Tower Bridge. Property also comes with 160 sq/ft roof terrace, Concierge service and a Share of the freehold.



Anchor Brewhouse

50 Shad Thames, SE1

- Penthouse One Bedroom
- Private Terrace
- 24hr Concierge Service
- River Views
- Share Of Freehold
- Lifts Access
- 983 Year Lease
- 775 Sq/ft



This exceptional one-bedroom residence, situated on the 7th floor of a historic landmark building, The residence features a generously sized open-plan kitchen/reception room with access to a spacious terrace, a double bedroom complete with a walk-in dressing room and terrace access, and a modern bathroom designed for dual use as an en-suite or guest bathroom. Ample storage adds to the appeal, making this property an ideal investment or pied-à-terre.

Explore the rich history and charm of the area, with easy access to renowned landmarks like the Shard, Tate Modern, and the Tower of London, as well as a variety of dining and entertainment options. Plus, enjoy convenient transportation options with London Bridge and Tower Hill stations nearby, along with river taxis. Immerse yourself in urban sophistication in this unparalleled enclave.

Tenure: Leasehold 983 years 9 months

Service Charge: £7000 p.a

Ground Rent: £0

Local Authority: London Borough of Southwark (Council Tax)

Council Tax Band: C

Energy Efficiency Rating		
	Current	Potential
Very energy efficient - lower running costs		
A (92-100)		
B (81-91)		
C (69-80)		82
D (55-68)	66	
E (39-54)		
F (21-38)		
G (1-20)		
Not energy efficient - higher running costs		
England, Scotland & Wales		EU Directive 2002/91/EC

Chestertons Tower Bridge Sales

220 Tower Bridge Road

Tower Bridge

London

SE1 2UP

towerbridge@chestertons.co.uk

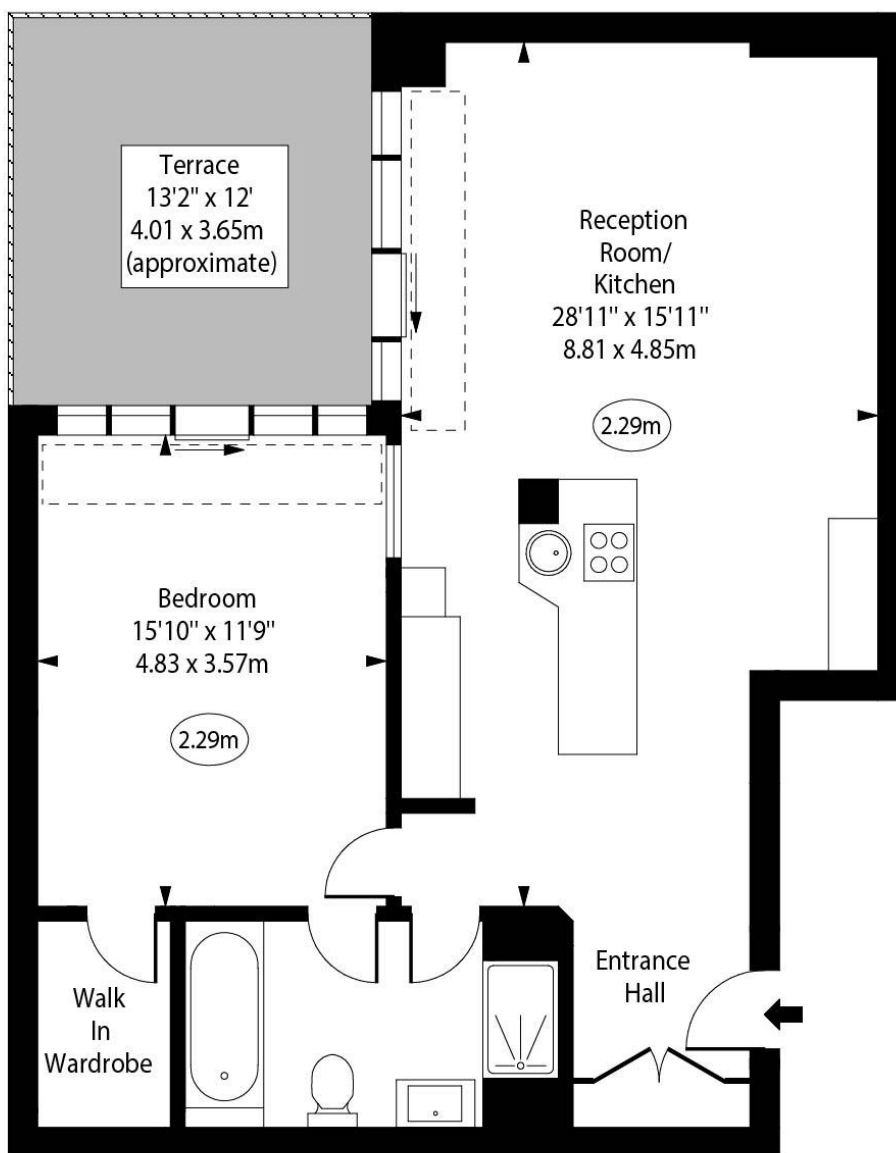
020 7357 7999

chestertons.co.uk



Anchor Brewhouse, Shad Thames, SE1

○ - Ceiling Height



Seventh Floor

Approx Gross Internal Area

788 Sq Ft - 73.21 Sq M

For Illustration Purposes Only - Not To Scale

www.goldlens.co.uk

Ref. No. 023495R

