

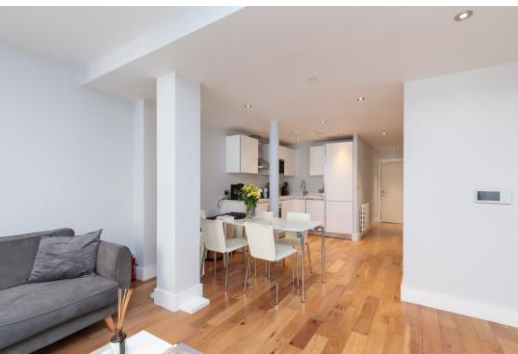


Harvard House

26 Alie Street, E1

Asking Price £575,000

A modern two bedroom, two bathroom apartment with balcony offered in excellent decorative condition throughout and ideally located moments from The City of London



Harvard House

26 Alie Street, E1

- Two Bedrooms
- Two Bathrooms
- Balcony
- Ample Storage
- Modern
- Leasehold
- Great Transport Links
- Excellent Location



A contemporary and luminous two-bedroom apartment, situated on the ground floor of an esteemed boutique residential development, conveniently located just moments away from the City. This residence boasts a spacious open-plan living room and kitchen adorned with fully integrated appliances. The master bedroom offers built-in wardrobes, an en suite bathroom, and access to a private balcony, while the second bedroom, generously proportioned, includes built-in storage and access to an en suite / Jack & Jill bathroom. Abundant storage space further enhances the property's appeal, ensuring a bright and airy ambiance throughout.

Fantastically located within close proximity to key areas such as The City of London, Shoreditch, Spitalfields, Brick Lane, St Katharine Docks, and the Thames, Harvard House offers unparalleled convenience. Access to transportation is effortless, with Aldgate, Aldgate East, Bank, Tower Hill, and Whitechapel Tube Stations, Whitechapel Overground, Tower Gateway DLR, Fenchurch St, and Liverpool St all within easy reach.

Tenure: Leasehold 988 years 9 months

Service Charge: £2002 p.a

Ground Rent: £500 p.a

Local Authority: Tower Hamlets

Council Tax Band: F

Energy Efficiency Rating		
	Current	Potential
Very energy efficient - lower running costs		
(92-100) A		
(81-91) B		
(69-80) C		
(55-68) D	63	63
(39-54) E		
(21-38) F		
(1-20) G		
Not energy efficient - higher running costs		
England, Scotland & Wales		EU Directive 2002/91/EC

Chestertons Tower Bridge Sales

220 Tower Bridge Road

Tower Bridge

London

SE1 2UP

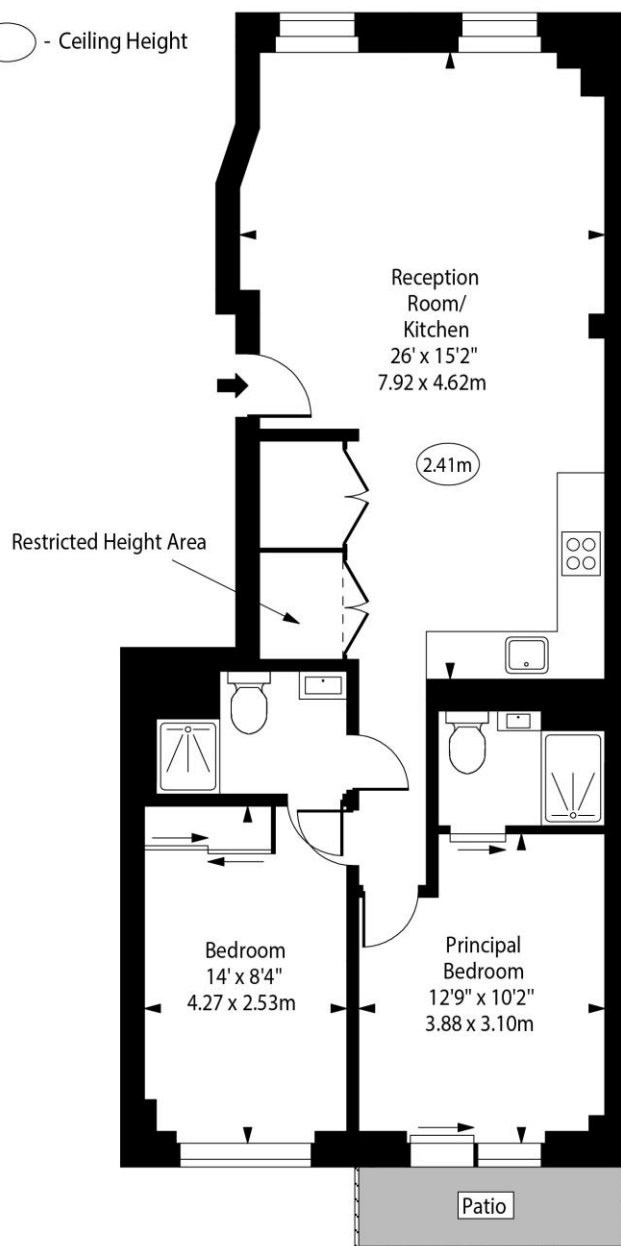
towerbridge@chestertons.co.uk

020 7357 7999

chestertons.co.uk

Harvard House, Alie Street, E1

○ - Ceiling Height



Ground Floor

Approx Gross Internal Area 715 Sq Ft - 66.42 Sq M

Approx. Floor Area Including Restricted Heights 733 Sq Ft - 68.10 Sq M

For Illustration Purposes Only - Not To Scale

www.goldlens.co.uk

Ref. No. 023160MS

