



Scotts Sufferance Wharf

5 Mill Street, SE1

Offers in excess of
£500,000

A well-presented two bedroom, one bathroom 3rd floor apartment within this very popular development on Mill Street. Porter, lift and parking space. Short walk to Shad Thames and London Bridge Station. Share of Freehold.

CHESTERTONS



Scotts Sufferance Wharf

5 Mill Street, SE1

- Two Double Bedrooms
- Share Of Freehold
- Porter/Concierge Service
- Private Balcony
- Secure Entry System
- 700 + Sq/ft
- EWS1 Certified
- Private Allocated Parking

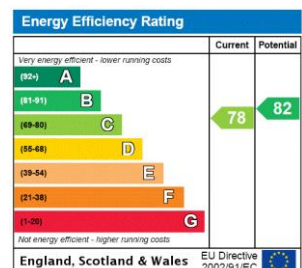


This third floor two bedroom apartment of approximately 710 square foot located on the Historic Mill Street set within one of the area's most popular gated developments.

The property comprises open plan Kitchen/Reception room with dining area, two double bedrooms, bathroom, balcony, access to a communal dockside terrace, concierge (7am - 11pm during the week, 9am-9pm on a Saturday) and secure underground parking.

The bars and restaurants of Shad Thames are close by. London Bridge, Bermondsey and Tower Hill are the nearest stations, providing excellent links to the City, Canary Wharf and the West End.

Tenure: Share of Freehold 90 years 10 months
Service Charge: £4650.1
Ground Rent: £0
Local Authority: London Borough of Southwark (Council Tax)
Council Tax Band: E

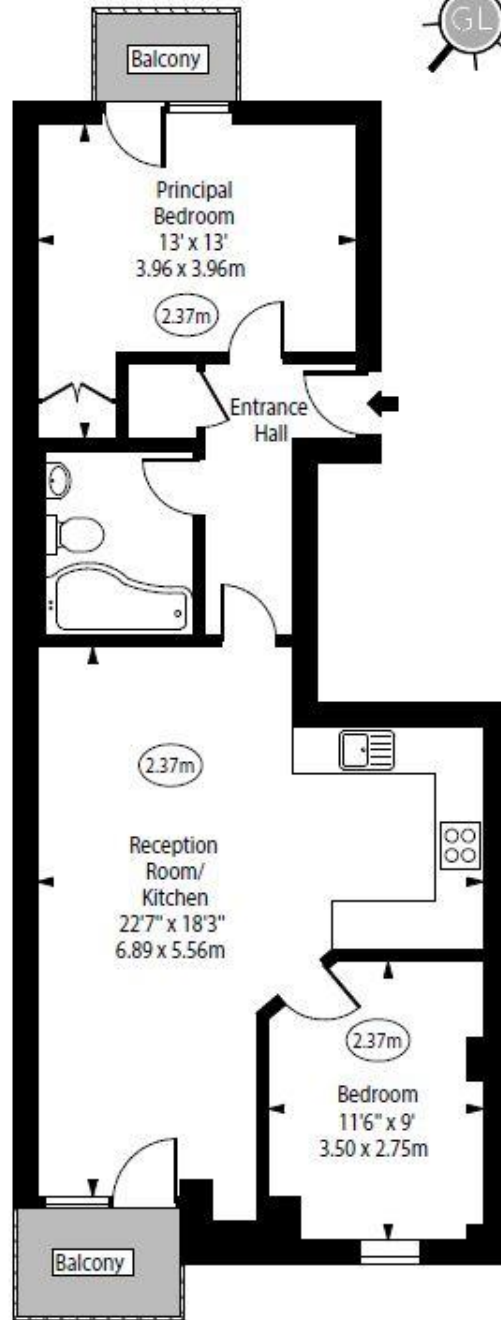


Chestertons Tower Bridge Sales

220 Tower Bridge Road
 Tower Bridge
 London
 SE1 2UP
 towerbridge@chestertons.co.uk
 020 7357 7999
 chestertons.co.uk

Scotts Sufferance Wharf,
Mill Street, SE1

○ - Ceiling Height



Third Floor

Approx Gross Internal Area 667 Sq Ft - 61.96 Sq M

For Illustration Purposes Only - Not To Scale

www.goldlens.co.uk

Ref. No. 021776R

Chesterton Global Ltd trading as Chestertons for themselves and for the vendor of this property whose agents they are, give notice that (i) these particulars do not constitute any part of an offer or contract, (ii) all statements contained within these particulars are made without responsibility on the part of Chestertons or the vendor, (iii) whilst made in good faith, none of the statements contained within these particulars are to be relied upon as a statement or representation of fact, (iv) any intending purchasers must satisfy themselves by inspection or otherwise as to the correctness of each of the statements contained within these particulars, (v) the vendor does not make or give either Chestertons or any person in their employment any authority to make or give representation or warranty whatsoever in relation to this property. Wide angle lenses may be used. ©Copyright Chestertons | Chesterton Global Ltd | Registered Office 40 Connaught Street, Hyde Park, London W2 2AB Registered Company Number 05334580.



This paper is
100% recyclable