



# Wiverton Tower

4 New Drum Street, E1

Offers in excess of  
£875,000

A stunning two bedroom apartment found on the 8th floor of this development, Aldgate Place. The property benefits from having a spacious open plan reception, winter garden, two double bedrooms and modern bathroom.





# Wiverton Tower

4 New Drum Street, E1

- Two Double Bedroom
- Almost 1000sqft
- Winter Garden
- 24 Hour Concierge
- Residents Gym
- Communal Roof Terrace
- Lift Access





A stunning large two bedroom apartment on the 8th floor of this recently built new development, Aldgate Place. The property benefits from having a spacious open plan reception room, winter garden, two double bedrooms with built in storage and two beautifully finished bathrooms (one en-suite). Further benefits include a 24 hour concierge, residents gym and communal roof terrace. The development is a stone's throw from Aldgate East station and ideally positioned for The City.

Wiverton Tower, a pinnacle of elegance, offers a host of amenities to cater to your every need. Delight in the unrivalled convenience of a 24-hour concierge service, embrace an active lifestyle at the residents' gym, and bask in the grandeur of the communal roof terrace, which provides breath-taking vistas of the majestic City skyline. Situated adjacent to Aldgate East Station, this exquisite property is ideally situated within close proximity to the myriad of shops and restaurants found in Aldgate Place. Nearby is the iconic Spitalfields Market, the bustling hub of Liverpool Street, and the historic Tower of London.

**Tenure:**

**Service Charge:** £0

**Ground Rent:** £0

**Local Authority:** Tower Hamlets

**Council Tax Band:** F

Energy Efficiency Rating		Current	Potential
Very energy efficient - lower running costs	A		
(92-100)	B	87	87
(81-91)	C		
(69-80)	D		
(55-68)	E		
(39-54)	F		
(21-38)	G		
Not energy efficient - higher running costs			
England, Scotland & Wales		EU Directive 2002/91/EC	

### Chestertons Tower Bridge Sales

220 Tower Bridge Road

Tower Bridge

London

SE1 2UP

towerbridge@chestertons.co.uk

020 7357 7999

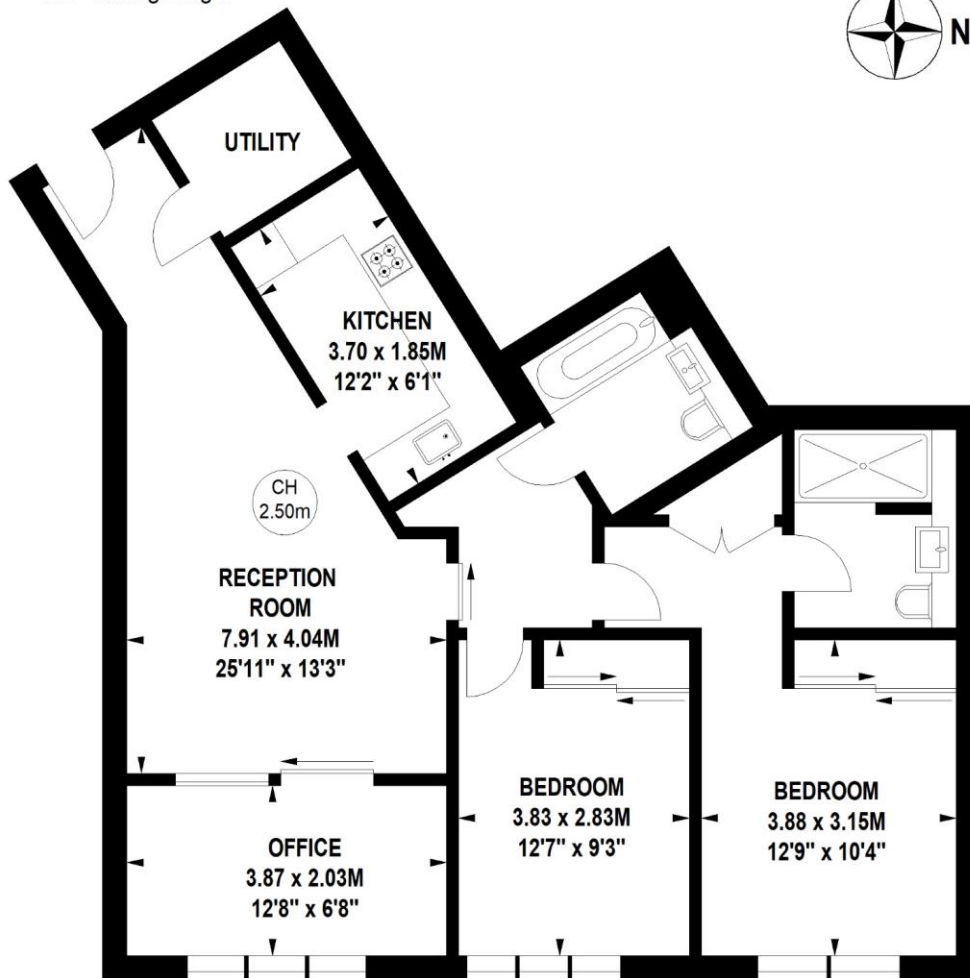
chestertons.co.uk

# Wiverton Tower, New Drum Street, E1

Approximate gross internal area

86.49 sq m / 931 sq ft

Key :  
CH - Ceiling Height



## Eighth Floor

Not to scale, for guidance only and must not be relied upon as a statement of fact.  
All measurements and areas are approximate only

