



# Altitude Point

71 Alie Street, E1

Offers in excess of  
£700,000

A fabulous 11th floor, 2 bedroom apartment in Altitude Point Building. Phenomenal views of the City of London and only moments from many Train and Tube lines. City Fringe living with high specification, 24hr concierge and communal roof terrace.





# Altitude Point

71 Alie Street, E1

- Two Bedroom
- Two Bathroom
- 11th Floor
- 24hr Concierge
- Communal Roof Terrace





A bright and modern two bedroom apartment on the 11th floor of a desirable residential development moments from the City. The apartment features floor to ceiling windows which offer exceptional views. It features an open plan kitchen and living room, master bedroom with built in wardrobes, second bedroom and second bathroom. Residents benefit from 24hr concierge and a large residents communal roof terrace on the 25th floor.

Altitude Point is within close proximity to the City of London, Shoreditch, Spitalfields, Brick Lane, St Katharine Docks and the Thames.

Transport links include Aldgate, Aldgate East, Bank, Tower Hill and Whitechapel Tube Stations, Whitechapel Overground, Tower Gateway DLR, Fenchurch St and Liverpool St and Crossrail at Liverpool St once completed.

**Tenure:** Leasehold 987 years 11 months

**Service Charge:** £6223.1 p.a

**Ground Rent:** £450 p.a

**Local Authority:** Tower Hamlets

**Council Tax Band:** F

Energy Efficiency Rating		
	Current	Potential
Very energy efficient - lower running costs		
(94-100) <b>A</b>		
(81-93) <b>B</b>	86	86
(69-80) <b>C</b>		
(55-68) <b>D</b>		
(39-54) <b>E</b>		
(21-38) <b>F</b>		
(1-20) <b>G</b>		
Not energy efficient - higher running costs		
England, Scotland & Wales EU Directive 2002/91/EC		

### *Chestertons Tower Bridge Sales*

220 Tower Bridge Road

Tower Bridge

London

SE1 2UP

towerbridge@chestertons.co.uk

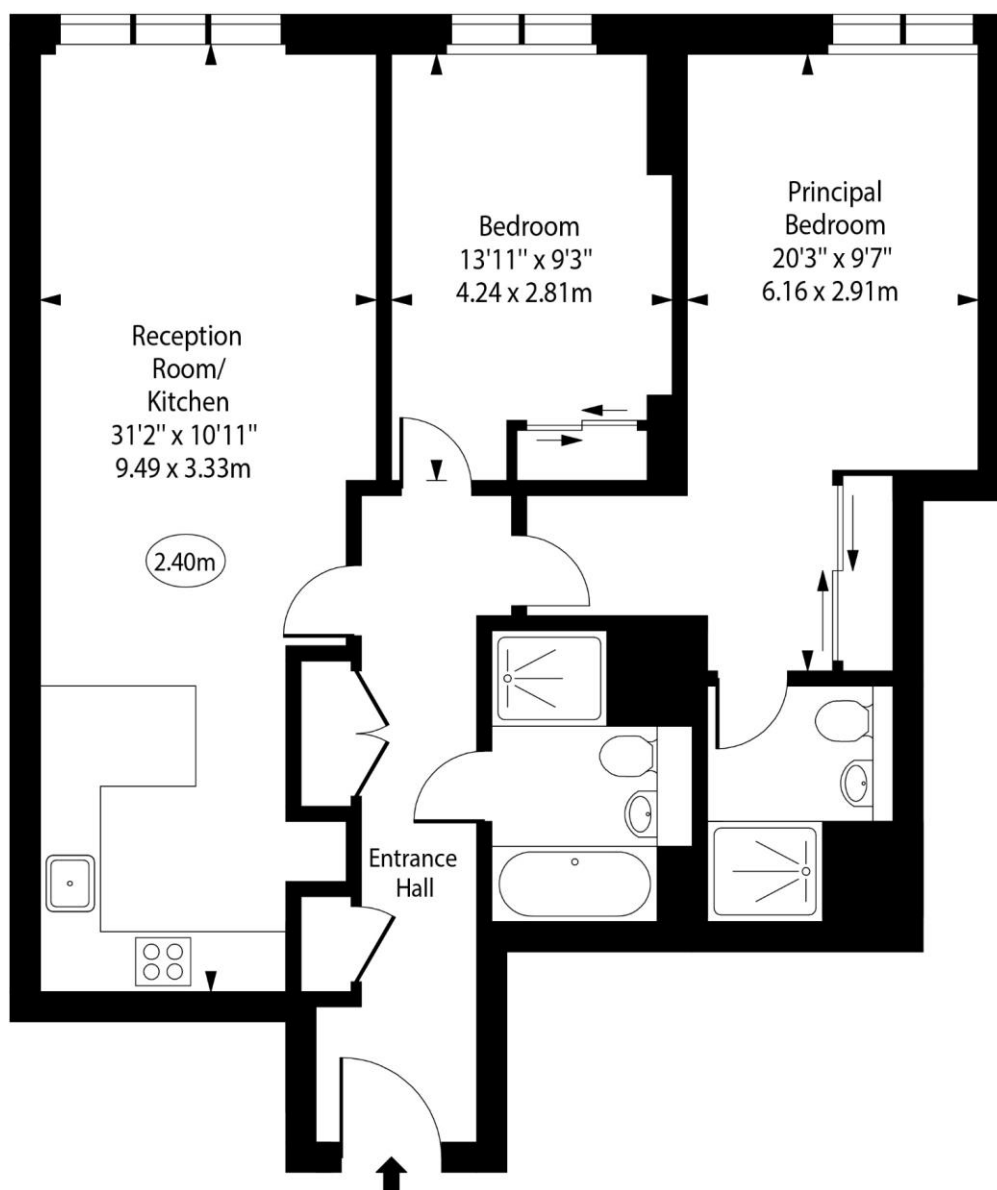
020 7357 7999

chestertons.co.uk



Altitude Point,  
Alie Street, E1

○ - Ceiling Height



Eleventh Floor

Approx Gross Internal Area      885 Sq Ft - 82.22 Sq M

For Illustration Purposes Only - Not To Scale

[www.goldlens.co.uk](http://www.goldlens.co.uk)

Ref. No. 020930MS

