



Long Walk

London, SE1

Offers in excess of
£650,000

A stylish two-bedroom two bathroom duplex penthouse apartment in a modern development moments from the fashionable Bermondsey Street.

CHESTERTONS



Long Walk

London, SE1

- Duplex penthouse
- Two bedrooms
- Two bathrooms
- South facing balcony
- Open plan kitchen living space
- Modern
- Leasehold
- Great location
- Excellent transport links



A stylish and beautifully presented two bedroom duplex penthouse apartment on the upper floors of a modern residential development.

On the entrance floor the property boasts a substantial entrance hallway, two double bedrooms, one with an en suite shower room and a family bathroom, tiled and fitted with a three-piece suite. The top floor provides a large reception room with floor to ceiling glass that floods the space with natural light and provides access to a south facing balcony. The semi open plan kitchen is fitted with gloss cabinets and modern appliances.

Zeno Court is ideally located for quick and easy access to Bermondsey Street, Maltby Street market, Tanner Street Park, Shad Thames, Bermondsey Square and Borough Market.

Nearby transport links at London Bridge and Bermondsey Stations provide access for Jubilee and Northern underground lines plus National Rail.

The apartment will come with a new 999 year lease and the remainder of the NHBC new home warranty.

Tenure: Leasehold 999 years

Service Charge: £2056 p.a.

Ground Rent: £750 p.a.

Local Authority: London Borough of Southwark (Council Tax)

Council Tax Band: E

Energy Efficiency Rating		Current	Potential
Very energy efficient - lower running costs			
(92-100)	A		
(81-91)	B	81	81
(69-80)	C		
(55-68)	D		
(39-54)	E		
(21-38)	F		
(1-20)	G		
Not energy efficient - higher running costs			
England, Scotland & Wales		EU Directive 2002/91/EC	

Chestertons Tower Bridge Sales

220 Tower Bridge Road

Tower Bridge

London

SE1 2UP

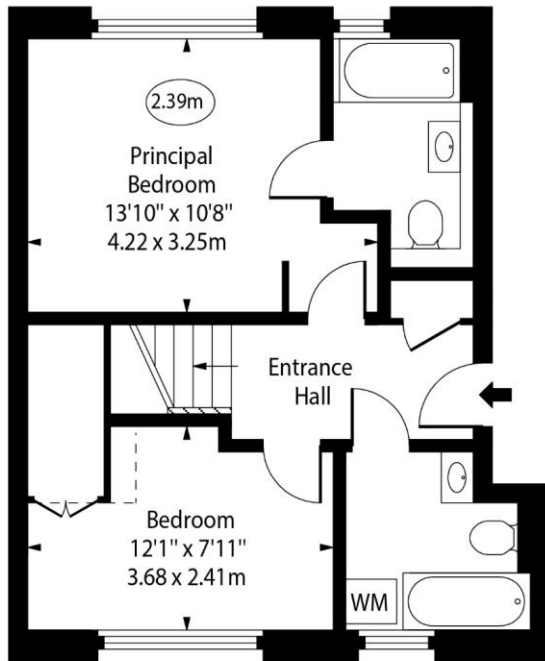
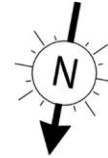
towerbridge@chestertons.co.uk

020 7357 7999

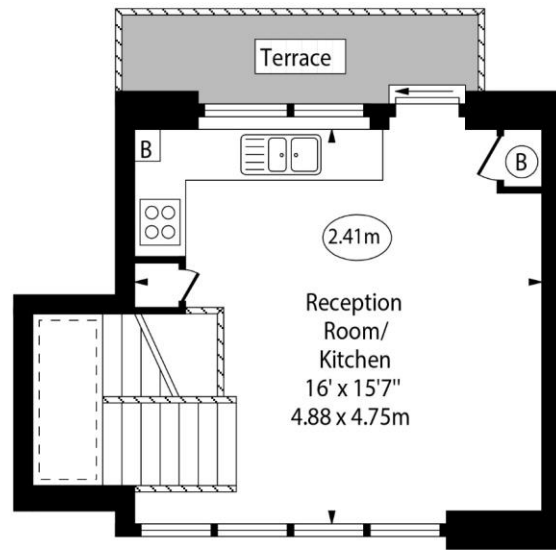
chestertons.co.uk

Zeno Court,
Long Walk, SE1

○ - Ceiling Height



Third Floor



Fourth Floor

Approx Gross Internal Area 729 Sq Ft - 67.72 Sq M
For Illustration Purposes Only - Not To Scale

