



Long Walk

London, SE1

Asking Price £600,000

A stylish two-bedroom split level apartment in a modern development moments from the fashionable Bermondsey Street.

CHESTERTONS



Long Walk

London, SE1

- Two Bedroom
- One bathroom
- Separate W.C.
- Balcony
- Modern
- Duplex
- Ground & first floor



A stylish and beautifully presented two-bedroom duplex apartment on the ground and first floor of a modern residential development.

The ground floor level provides a substantial entrance hallway, two double bedrooms and separate W.C. The first floor provides a large reception room with floor to ceiling glass that floods the space with natural light and provides access to a south facing balcony. The semi open plan kitchen is fitted with gloss cabinets, integrated appliances and a breakfast bar. The family bathroom is tiled and fitted with a three-piece suite.

Zeno Court is ideally located for quick and easy access to Bermondsey Street, Maltby Street market, Tanner Street Park, Shad Thames, Bermondsey Square and Borough Market. Nearby transport links at London Bridge and Bermondsey Stations provide access for Jubilee and Northern underground lines plus National Rail.

The apartment will come with a new 999 year lease and the remainder of the NHBC new home warranty.

Tenure: Leasehold 999 years

Service Charge: £2285 p.a.

Ground Rent: £750 p.a.

Local Authority: London Borough of Southwark (Council Tax)

Council Tax Band: E

Energy Efficiency Rating		
	Current	Potential
Very energy efficient - lower running costs		
A (92-100)		
B (81-91)	81	81
C (69-80)		
D (55-68)		
E (39-54)		
F (21-38)		
G (1-20)		
Not energy efficient - higher running costs		
England, Scotland & Wales EU Directive 2002/91/EC		

Chestertons Tower Bridge Sales

220 Tower Bridge Road

Tower Bridge

London

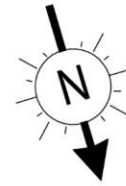
SE1 2UP

towerbridge@chestertons.co.uk

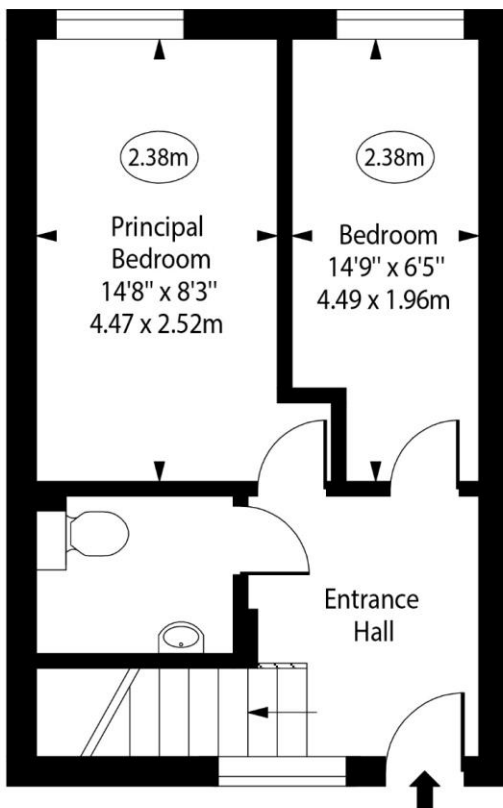
020 7357 7999

chestertons.co.uk

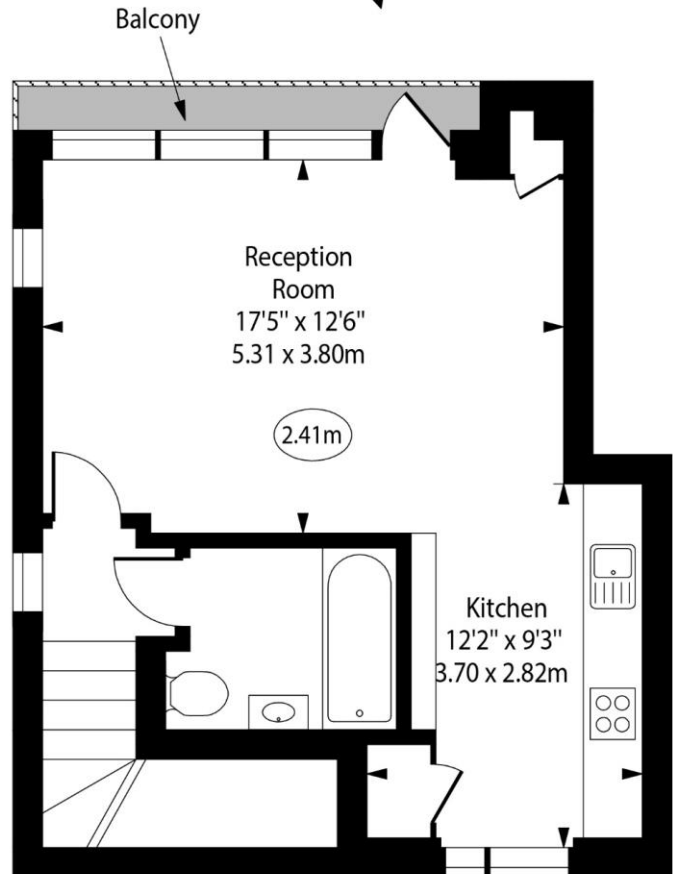
Zeno Court, Long Walk, SE1



○ - Ceiling Height



Ground Floor



First Floor

Approx Gross Internal Area 807 Sq Ft - 74.97 Sq M
For Illustration Purposes Only - Not To Scale

