



Kennington Road

London, SE11

Asking Price £2,000,000

A truly exceptional five bedroom Georgian townhouse located on one of the most desirable streets in Kennington. The property benefits from abundance of charm throughout and a beautiful landscaped garden to the rear.



Kennington Road

London, SE11

- Georgian
- Town house
- Period property
- Five bedrooms
- Three bathrooms
- Garden
- Excellent transport links
- Great location



This elegant, five-storey Grade II listed Georgian townhouse in Kennington boasts modern luxury with bespoke touches. Renovated to an exceptional standard, it features a spacious double reception room, 26ft kitchen/dining area, five bedrooms, and three bathrooms.

Finished to a high standard, the townhouse stands out among period properties of this calibre, brimming with Georgian splendour. The property offers an abundance of natural light, double-height ceilings, sash windows and unique design elements. The landscaped 53ft Southwest facing garden complements the living space wonderfully and is a tranquil oasis to relax.

The property is located close to Kennington Cross, local amenities and green spaces like Kennington Park and Cleaver Square. Transport links at Kennington Underground Station for the Northern Line and a choice of bus routes are located moments from the property.

Tenure: Freehold

Service Charge: £0

Ground Rent: £0

Local Authority: London Borough Of Lambeth

Council Tax Band: G

Energy Efficiency Rating		
	Current	Potential
Very energy efficient - lower running costs		
A (92-100)		
B (81-91)		82
C (69-80)		
D (55-68)	56	
E (39-54)		
F (21-38)		
G (1-20)		
Not energy efficient - higher running costs		
England, Scotland & Wales		EU Directive 2002/91/EC

Chestertons Tower Bridge Sales

220 Tower Bridge Road

Tower Bridge

London

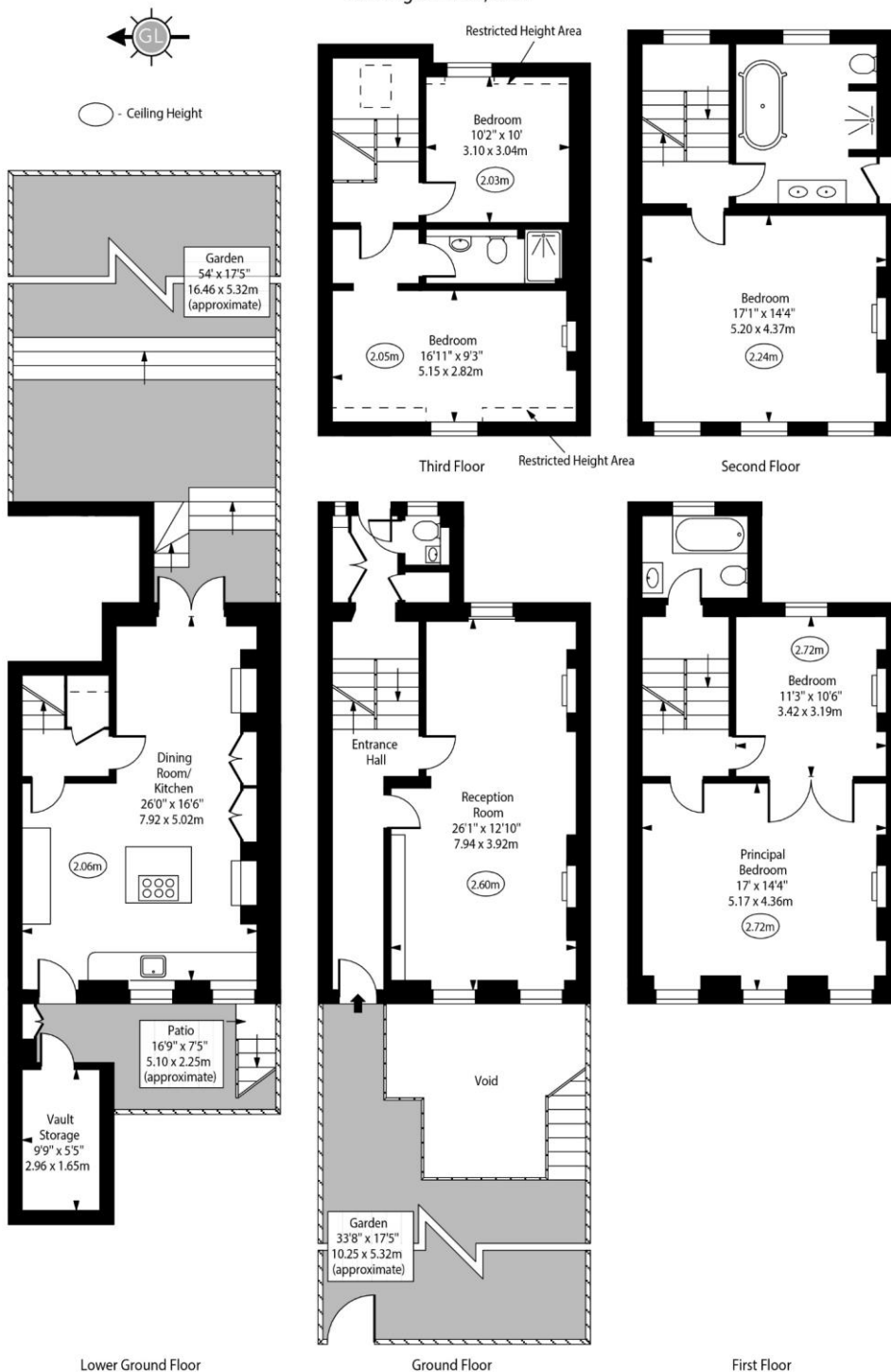
SE1 2UP

towerbridge@chestertons.co.uk

020 7357 7999

chestertons.co.uk

Kennington Road, SE11



Approx Gross Internal Area 2225 Sq Ft - 206.70 Sq M

Approx. Floor Area Including Restricted Heights 2240 Sq Ft - 208.10 Sq M
(Excluding Vault Storage)

For Illustration Purposes Only - Not To Scale
www.goldlens.co.uk
Ref. No. 022586.1R

Chesterton Global Ltd trading as Chestertons for themselves and for the vendor of this property whose agents they are, give notice that (i) these particulars do not constitute any part of an offer or contract, (ii) all statements contained within these particulars are made without responsibility on the part of Chestertons or the vendor, (iii) whilst made in good faith, none of the statements contained within these particulars are to be relied upon as a statement or representation of fact, (iv) any intending purchasers must satisfy themselves by inspection or otherwise as to the correctness of each of the statements contained within these particulars, (v) the vendor does not make or give either Chestertons or any person in their employment any authority to make or give representation or warranty whatsoever in relation to this property. Wide angle lenses may be used. ©Copyright Chestertons | Chesterton Global Ltd | Registered Office 40 Connaught Street, Hyde Park, London W2 2AB Registered Company Number 05334580.



This paper is
100% recyclable