



Masters Lodge

Johnson Street, E1

Offers in excess of
£800,000

A charming two bedroom apartment situated on the ground and first floor of this gated school conversion, conveniently located with a garden, own entrance and a private allocated parking space.

CHESTERTONS



Masters Lodge

Johnson Street, E1

- Two Double Bedrooms
- Ground Floor
- Patio
- Converted Victorian School
- Gated Development
- Two En-suite
- Share Of Freehold
- Private Parking (Within The Gated Development)

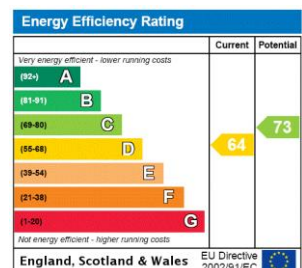


This ground floor apartment offers two double bedrooms, both with en-suite bathrooms and an exceptional open-plan kitchen/dining/living area with access to a private garden. The property's expansive living space makes for a truly exceptional entertaining space.

However, the additional jewel in this home's crown is its Unique layout, the abundance of natural light, own entrance and its fantastic garden which is all situated in this historic Victorian School Building. You immediately feel the depth of character of your surroundings as soon as you enter the gated development making this the most impressive find, and a rare opportunity at purchasing a home of this calibre is not to be missed. The property includes a private allocated parking space.

Masters Lodge is located in Shadwell, which is North of Wapping, East of The City, West of Canary Wharf and South of Shoreditch and Whitechapel. The area is rich in culture and history and has excellent transport links including the DLR and London Overground situated within 0.3 miles.(All distances and times are approximate)

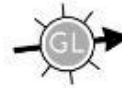
- Tenure:** Share of Freehold 994 years 9 months
- Service Charge:** £4763.18 The service charge includes a sinking fund.
- Ground Rent:** £0
- Local Authority:** Tower Hamlets
- Council Tax Band:** E



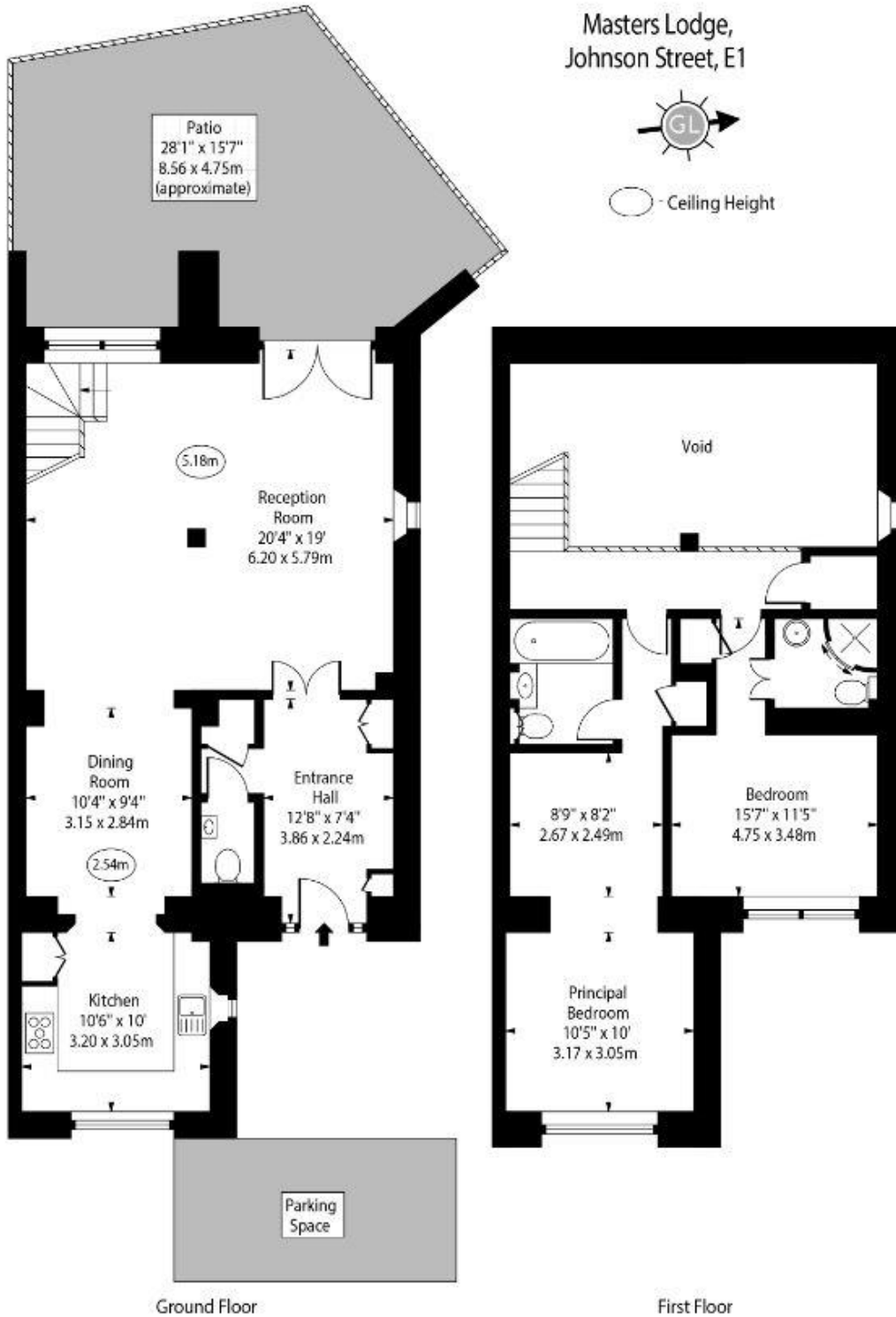
Chestertons Tower Bridge Sales

220 Tower Bridge Road
 Tower Bridge
 London
 SE1 2UP
 towerbridge@chestertons.co.uk
 020 7357 7999
 chestertons.co.uk

Masters Lodge,
Johnson Street, E1



○ Ceiling Height



Approx Gross Internal Area 1282 Sq Ft - 119.10 Sq M

(Excluding Void)

For Illustration Purposes Only - Not To Scale

www.goldlens.co.uk

Ref. No. 021594K

