



Mews Street

London, E1W

Asking Price £1,700,000

Extremely rare to the market this freehold three-bedroom terraced house fronts directly on to St. Katharine Docks with stunning views across the marina via a private dockside patio.



Mews Street

London, E1W

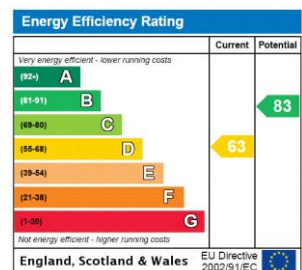
- House
- Three bedrooms
- Freehold
- Patio
- Separate garage
- Prime waterside location
- Excellent condition
- Rare to the market



One of only ten cottages along the dock and arranged over two floors this is a rare chance to acquire a freehold house finished to an excellent standard within the dock. The house extends to approx. 1200 sq. ft. and offers a private patio and a double length garage. The ground floor benefits from both a reception room and third bedroom or dining room, as well as a kitchen that faces directly onto the dock. The first floor has two spacious double bedrooms, an ensuite shower room and a family bathroom. The separate double length lock up garage provides secure parking.

St Katharine Docks is a tranquil marina just by the City of London and is served by a number of restaurants and bars with supermarket shopping at Waitrose in Thomas More Square. Public transport is at Tower Hill with the DLR and Underground.

Tenure: Freehold
Service Charge: £0
Ground Rent: £0
Local Authority: Tower Hamlets
Council Tax Band: G



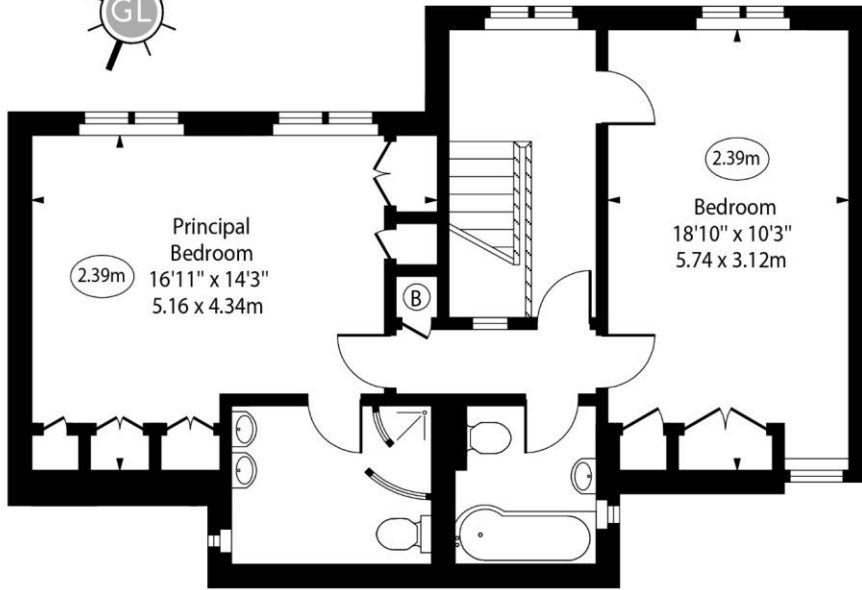
Chestertons Tower Bridge Sales

220 Tower Bridge Road
 Tower Bridge
 London
 SE1 2UP
 towerbridge@chestertons.co.uk
 020 7357 7999
 chestertons.co.uk

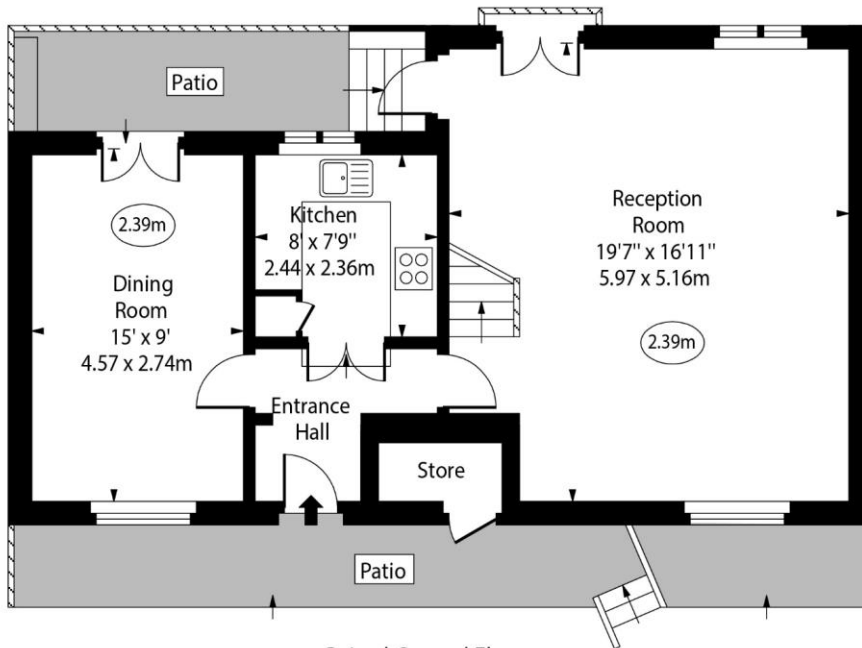
Greenwoods Cottage,
Mews Street, E1W



○ - Ceiling Height



First Floor



Raised Ground Floor

Approx Gross Internal Area 1201 Sq Ft - 111.57 Sq M
(Excluding Store)

For Illustration Purposes Only - Not To Scale
www.goldlens.co.uk
Ref. No. 020710M