



Upper Richmond Road

London, SW15

Asking Price £600,000

Enviably located in the ever popular Tileman House is this beautifully presented two-bedroom, two bathroom apartment offering contemporary living at its finest.

CHESTERTONS



Upper Richmond Road

London, SW15

- Two double bedrooms
- Two bathrooms
- Porter
- Central Putney location
- Offering in excess of 750 square foot
- Chain free
- Two communal roof terraces



Enviably located in the ever popular Tileman House is this beautifully presented two bedroom, two bathroom apartment offering contemporary living at its finest.

This specific flat is located on the second floor of this Iconic building. The property features two large double bedrooms, one with en-suite, an additional family bathroom, open plan kitchen / living room with high-end appliances, ample storage and measures in at just over 750 square foot.

Tileman House benefits from a lift, concierge and communal gardens. The property is being sold chain free. There are also two communal roof terraces, both accessed on the same floor as the flat.

The development is located just 0.1 miles away from Putney Station which offers easy access to Waterloo, as well as just 0.2 miles from East Putney underground station which offers the district line.

Tenure: Leasehold (expires 1/1/2235)

Service Charge: £3,907 All building related expenses and concierge.

Ground Rent: £400 p.a

Local Authority: London Borough of Wandsworth

Council Tax Band: E

Score	Energy rating	Current	Potential
92+	A		
81-91	B	84 B	84 B
69-80	C		
55-68	D		
39-54	E		
21-38	F		
1-20	G		

Chestertons Putney Sales

153 Upper Richmond Road
 London
 SW15 2TX
 putney@chestertons.co.uk
 020 8246 5959
 chestertons.co.uk

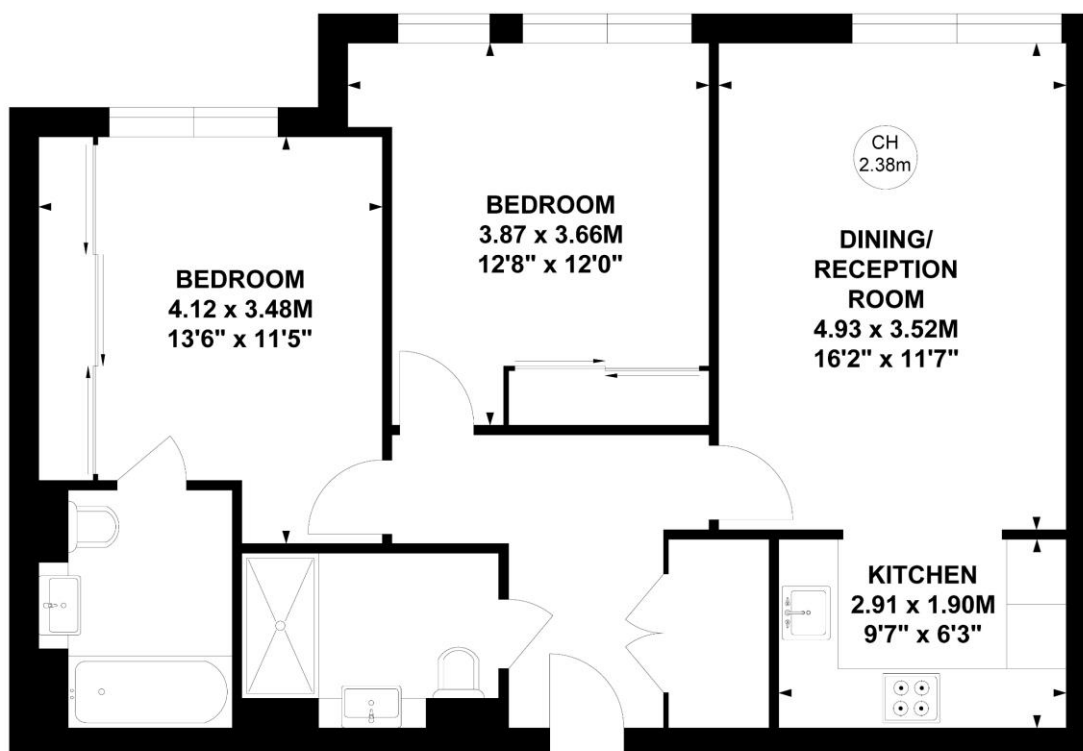
Tileman House, SW15

Approximate gross internal area

69.27 sq m / 746 sq ft

Key :

CH - Ceiling Height



Second Floor

Not to scale, for guidance only and must not be relied upon as a statement of fact.

All measurements and areas are approximate only

