



# Upper Richmond Road

London, SW15

Asking Price £850,000

An impressive modern two-bedroom two-bathroom flat built in 2016 providing a south-facing open-plan living room, two balconies and parking located right in the heart of Putney.

**CHESTERTONS**



# Upper Richmond Road

## London, SW15

- Two double bedrooms
- Two bathrooms (one ensuite)
- Stunning modern interiors
- South-facing living room
- Two balconies
- Impressive modern building completed 2016
- Parking
- Central location - moments from shops, station, restaurants
- Share of Freehold





Contemporary apartment in a very high specification Crest Nicholson building, completed in 2016. It is described by its architects as an "active, vibrant" place to live being right in the heart of Putney with two secluded podium communal gardens.

The flat itself is in immaculate condition, offering a spacious south facing open-plan kitchen/ lounge opening up to a large balcony. There are two double bedrooms and two bathrooms (the master offers a walk-in wardrobe, ensuite as well as another large balcony). The property also benefits from an underground parking space.

Tileman House is a distinctive and well-regarded building with concierge right in the centre of Putney and East Putney with shops, stations, cafes all on the doorstep.

**Tenure:** Share of Freehold (Expiry: 01/01/2265)

**Service Charge:** £4,844.60 p.a. plus £291.84 p.a. for parking space

**Local Authority:** London Borough of Wandsworth

**Council Tax Band:** E

Score	Energy rating	Current	Potential
92+	A		
81-91	B	86 B	86 B
69-80	C		
55-68	D		
39-54	E		
21-38	F		
1-20	G		

### *Chestertons Putney Sales*

153 Upper Richmond Road

London

SW15 2TX

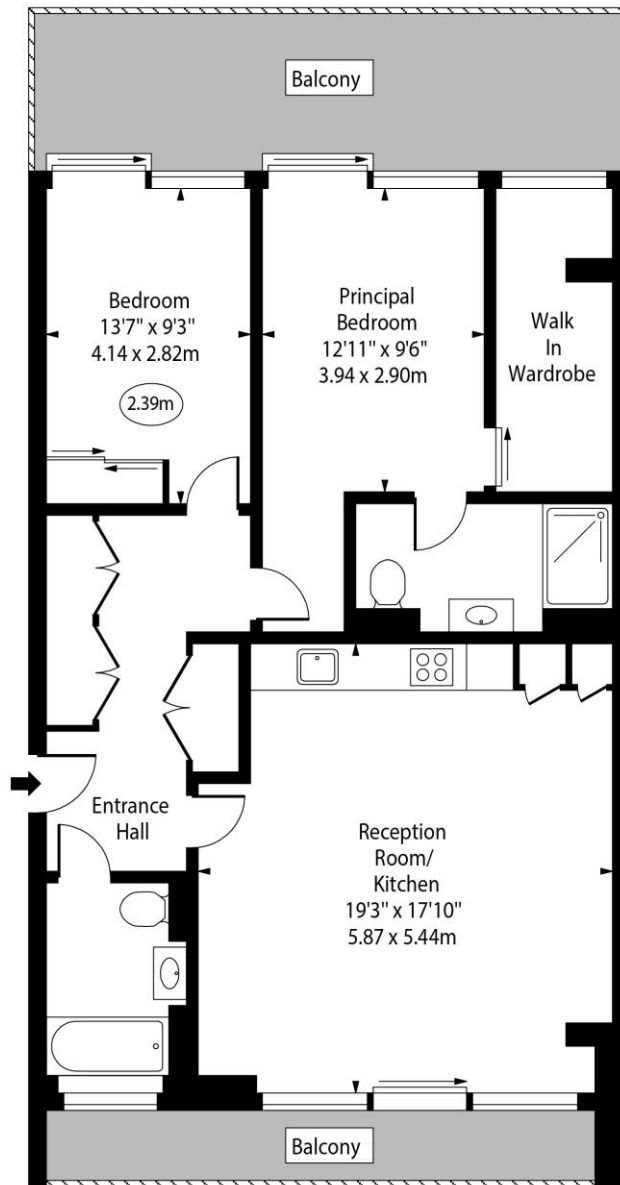
putney@chestertons.co.uk

020 8246 5959

chestertons.co.uk

Tileman House,  
Upper Richmond Road, SW15

○ - Ceiling Height



Fourth Floor

Approx Gross Internal Area      932 Sq Ft - 86.58 Sq M

Every attempt has been made to ensure the accuracy of the floor plan shown.  
However, all measurements, fixtures, fittings, and data shown are approximate interpretations and  
for illustrative purposes only.

Measured according to the RICS IPMS 2. Not To Scale.

[www.goldlens.co.uk](http://www.goldlens.co.uk)

Ref. No. 027895E

