



Putney Hill

SW15

Asking Price £350,000

A lovely, bright and spacious one bedroom purpose-built apartment situated on the sixth floor of this well-maintained block.



Putney Hill

SW15

- Sixth Floor
- Lift
- Communal Gardens
- Balcony
- Double Bedroom
- Chain Free



A lovely, bright and spacious one bedroom purpose built apartment situated on the sixth floor of this well maintained block.

Offering nearly 600 sq. ft. of accommodation, this well presented apartment offers a bright reception room with access to a balcony with far reaching views over Putney Heath and beyond, a spacious bedroom with fitted wardrobes, modern kitchen and bathroom.

Located on Putney Hill giving access to Putney High Street, Putney train station and East Putney tube station are within walking distance and there are numerous bus links immediately accessible from Putney Hill, for easy access to Putney, Wimbledon Village, Fulham and beyond.

Tenure: Leasehold (Expiry: 11/04/2188)

Service Charge: £2872.64 p.a.

Ground Rent: Nil

Local Authority: London Borough of Wandsworth

Council Tax Band: C

Score	Energy rating	Current	Potential
92+	A		
81-91	B		
69-80	C	79 C	91 B
55-68	D		
39-54	E		
21-38	F		
1-20	G		

Chestertons Putney Sales

153 Upper Richmond Road

London

SW15 2TX

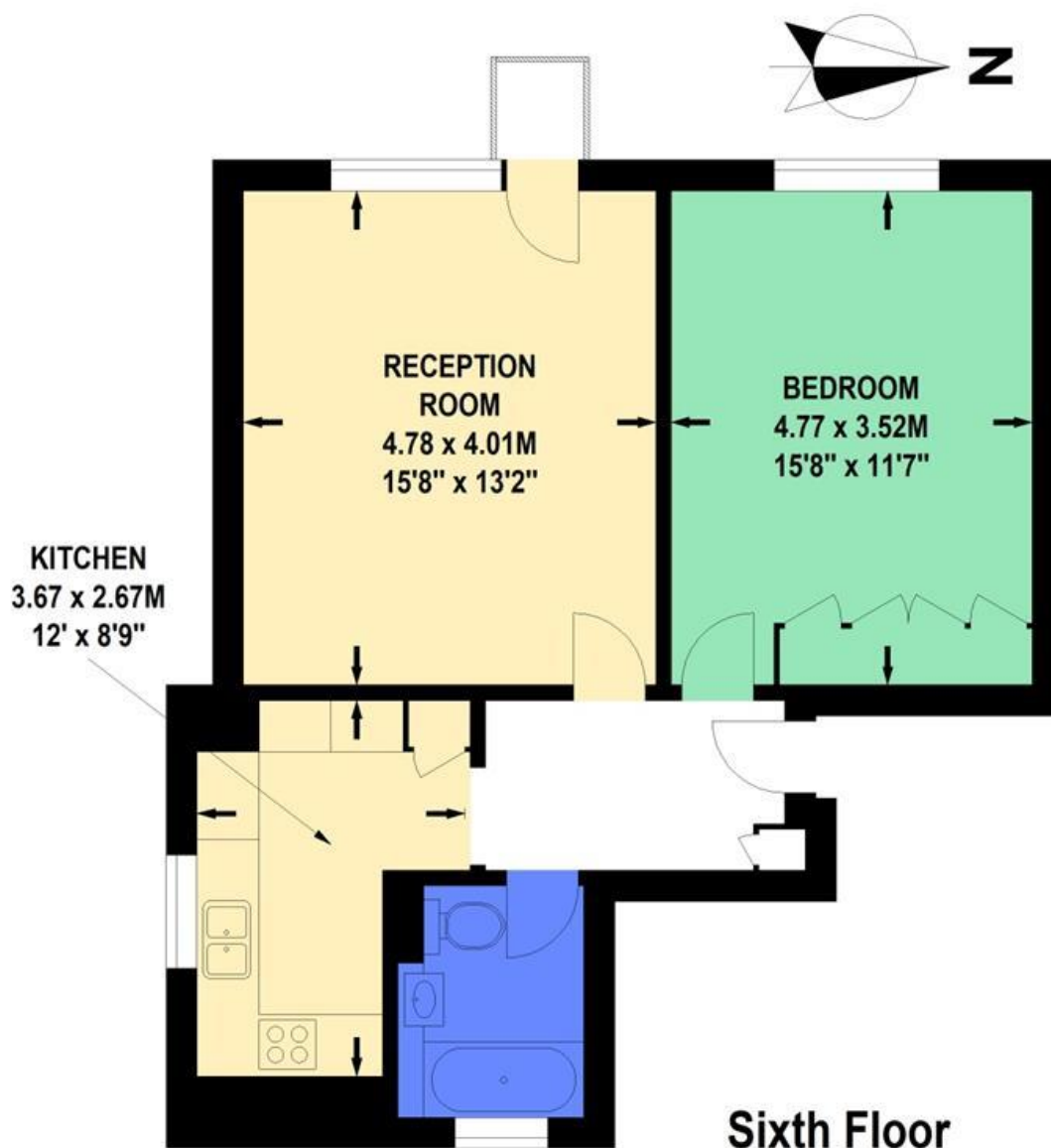
putney@chestertons.co.uk

020 8246 5959

chestertons.co.uk

Sylva Court, Putney Hill, SW15

Approximate Gross Internal Area 55 sq.m / 592 sq.ft



Floor Plan produced for Allan Fuller by Mays Floorplans © . Tel 020 3397 4594

Illustration for identification purposes only, not to scale

All measurements are maximum, and include wardrobes and window bays where applicable

