



Kenilworth Court

Lower Richmond Road, SW15

Asking Price £1,000,000

- Gated Mansion Block
- River Facing
- Prime West Putney Location
- Double Reception Room
- 4 Double Bedrooms
- Two Bathrooms (One newly refurbished)
- Guest toilet
- Eat-in Kitchen
- Walking distance to the tube Station Zone 2
- Porter



Kenilworth Court

Lower Richmond Road, SW15



This expansive mansion flat is located in one of Lower West Putney's most desirable gated communities, just a stone's throw from the river's edge, benefitting from an on-site porter.

Offering 1419 sq. ft. of living accommodation, this fantastic river facing first floor flat boasts excellent lateral living space. Comprising either four good-sized bedrooms and a large reception rooms (how the current owners use the property), or three double bedrooms and two reception rooms. The eat-in kitchen benefits plenty of preparation space and enough space for a dining room table.

The property comes with a Share of Freehold and long underlying lease.

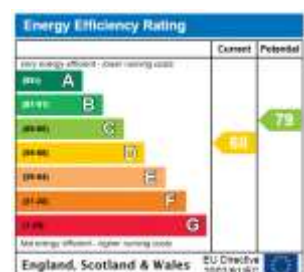
Kenilworth Court is located in the highly desirable Lower West Putney area, moments from the Thames and the ease of transport via Putney Bridge underground station which is just 0.4 miles away (Zone 2)

Tenure: Share of Freehold (Lease expiry: 25/03/2182)

Service Charge: £5412.16 p.a.

Local Authority: London Borough of Wandsworth

Council Tax Band: E



Chestertons Putney Sales

153 Upper Richmond Road

London

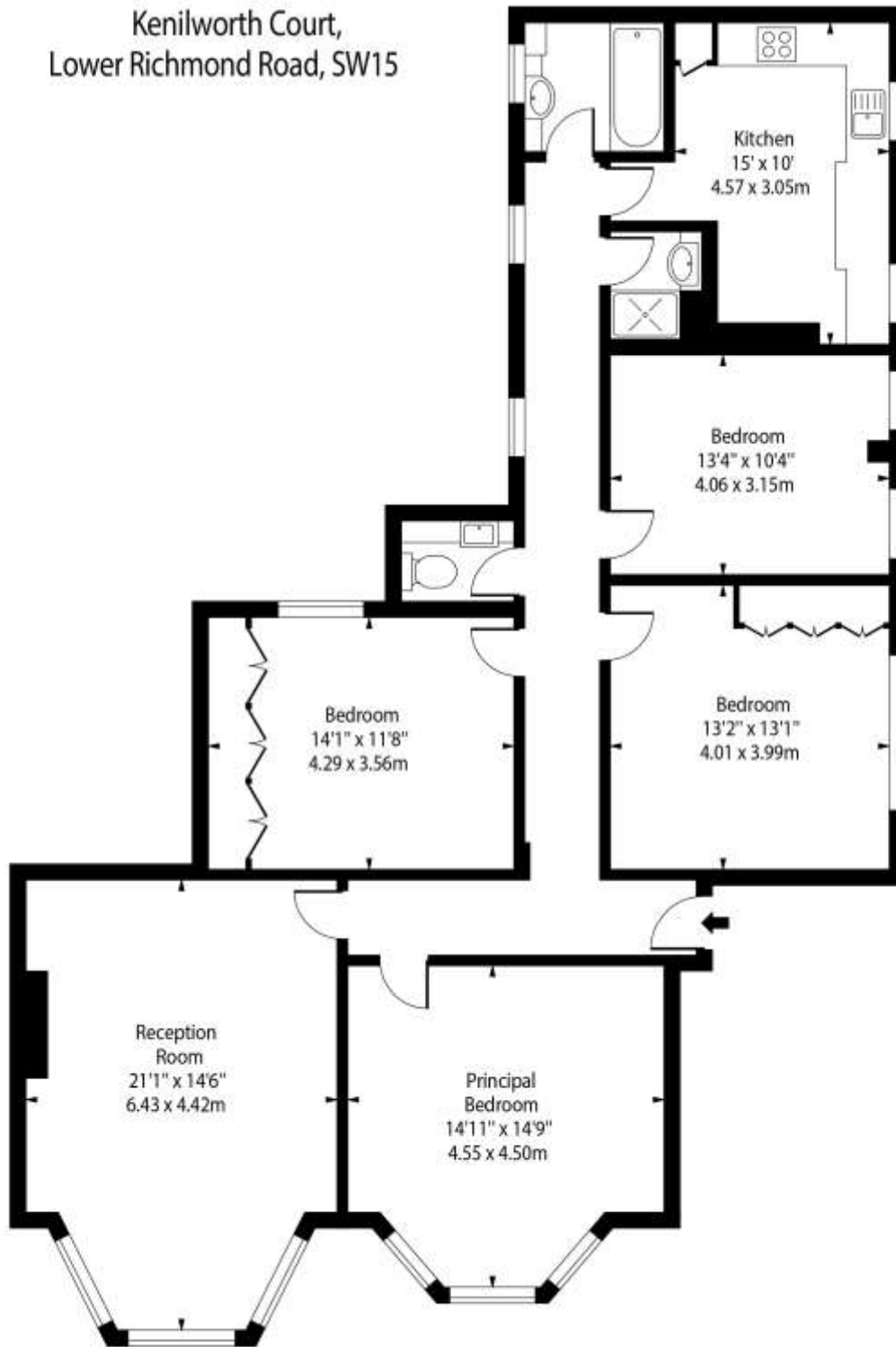
SW15 2TX

putney@chestertons.co.uk

020 8246 5959

chestertons.co.uk

Kenilworth Court,
Lower Richmond Road, SW15



First Floor

Approx Gross Internal Area 1419 Sq Ft - 131.83 Sq M

For Illustration Purposes Only - Not To Scale