



Upper Richmond Road

London, SW15

Asking Price £695,000

A sensational three-bedroom, two bathroom, split level flat. This exceptionally bright and airy flat has large rooms and access to a south-facing balcony. Offered chain free.

CHESTERTONS



Upper Richmond Road

London, SW15

- Three double bedrooms
- Two bathrooms
- South facing terrace
- Split level
- Chain free
- In-excess-of 950 sq. ft



A sensational three-bedroom, two bathroom, split level flat. This exceptionally bright and airy flat has large rooms and access to a south-facing balcony. Offered chain free.

Set across two floors, as you enter the property you have a large hallway area, providing access to the principle bedroom with ensuite, two further double bedrooms, large storage cupboard and a family bathroom, which is all presented in great condition.

Located on the top floor is the large open plan kitchen living room. Flooded with natural light, allowing plenty of space for living space and dining space, presenting fantastic space to entertain. In all, the property provides great space, in-excess-of 950 sq. ft

The property also offers a large South facing balcony, which has access via the living space, with a beautiful outlook.

Located moments away from Putney Leisure centre and is ideally located for Putney Mainline Station with direct access to Waterloo, Vauxhall and Clapham Junction. It is also perfectly placed for access to Putney High Street and East Putney Station (District Line) with the numerous bus routes of the Upper Richmond Road close by.

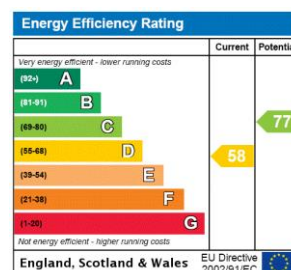
Tenure: Share of Freehold (Expiry: 24/06/2115)

Service Charge: No Service Charge – Building Insurance contribution is £659.52 p .a

Ground Rent: Nil

Local Authority: London Borough of Wandsworth

Council Tax Band: E



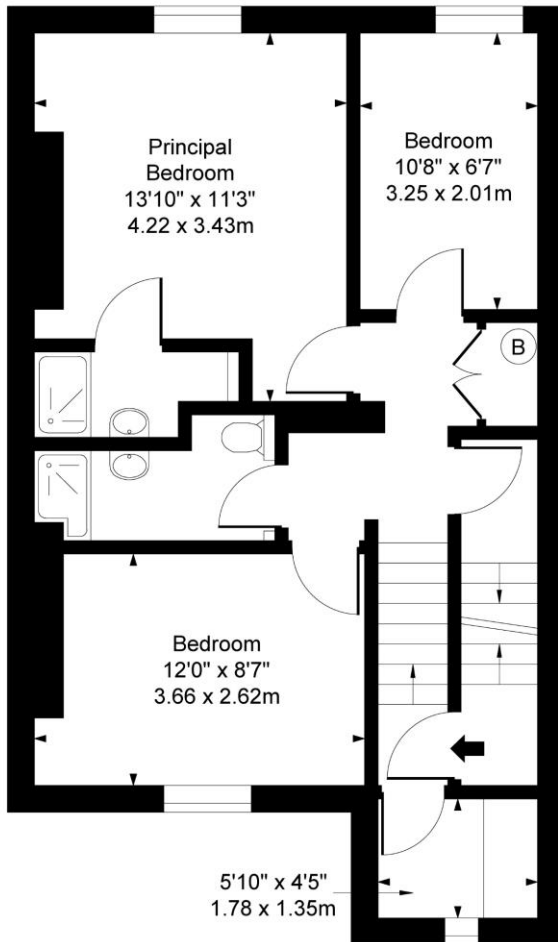
Chestertons Putney Sales

153 Upper Richmond Road
London
SW15 2TX
putney@chestertons.co.uk
020 8246 5959
chestertons.co.uk

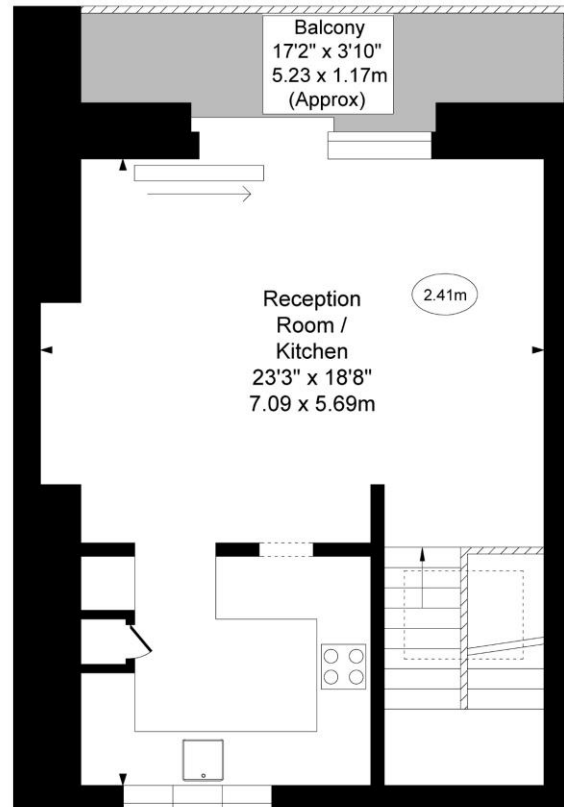
Upper Richmond Road, SW15



○ - Ceiling Height



Second Floor



Third Floor

Approx Gross Internal Area 959 Sq Ft - 89.09 Sq M

For Illustration Purpose Only - Not To Scale
www.goldlens.co.uk
Ref. No. 27040EH