



rr

# Putney High Street

Putney, SW15

Asking Price £900,000

Offering beautiful views of Putney Bridge and the River Thames is this three bedroom apartment offering 1120 sq. ft. of accommodation, with three bedrooms, two bathrooms and a private and secluded South facing balcony.

CHESTERTONS





# Putney High Street

## Putney, SW15

- River views
- Central Putney location
- Share of freehold
- Energy efficient (EPC B)
- Lateral apartment
- Three Bedrooms
- Two Bathrooms
- Heat-pump (cooling and heating)
- South facing balcony
- Beautiful communal areas





Located on the corner of Putney high-street and the Lower Richmond Road, beautifully situated to be on the door stop of all Putney amenities, whilst taking in the breath-taking views of the River Thames.

The property offers three double bedrooms and two bathrooms, giving a very flexible feel to the property.

The open-plan kitchen/living room is set across the front of the building, with a high-end integrated kitchen and wood flooring, the living space is over 10 metres wide, with four large windows capturing the light and looking over the River Thames.

The building has intercom and beautifully finished communal areas, with large spiral staircase.

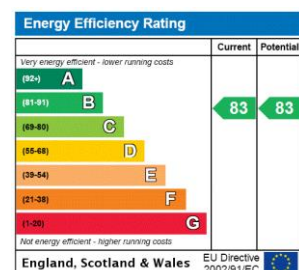
This period handsome building is situated on the corner of Putney High-Street and the Lower Richmond Road, lying beside the River Thames and close to Putney Bridge and Putney High Street where the Mainline Station (Waterloo) is situated. The closest underground is Putney Bridge (District Line). There is also an extensive bus network and the number 22 bus goes directly to Oxford Circus. The Thames Clipper service runs down the river from Putney Pier to Blackfriars and beyond.

**Tenure:** Share of Freehold (expiry: 01/07/3016)

**Service Charge:** £2,636 p.a. Building Insurance, Terrorism Insurance, D&O insurance (flat owners own co. owning lease), accountants, sinking fund

**Local Authority:** London Borough of Wandsworth

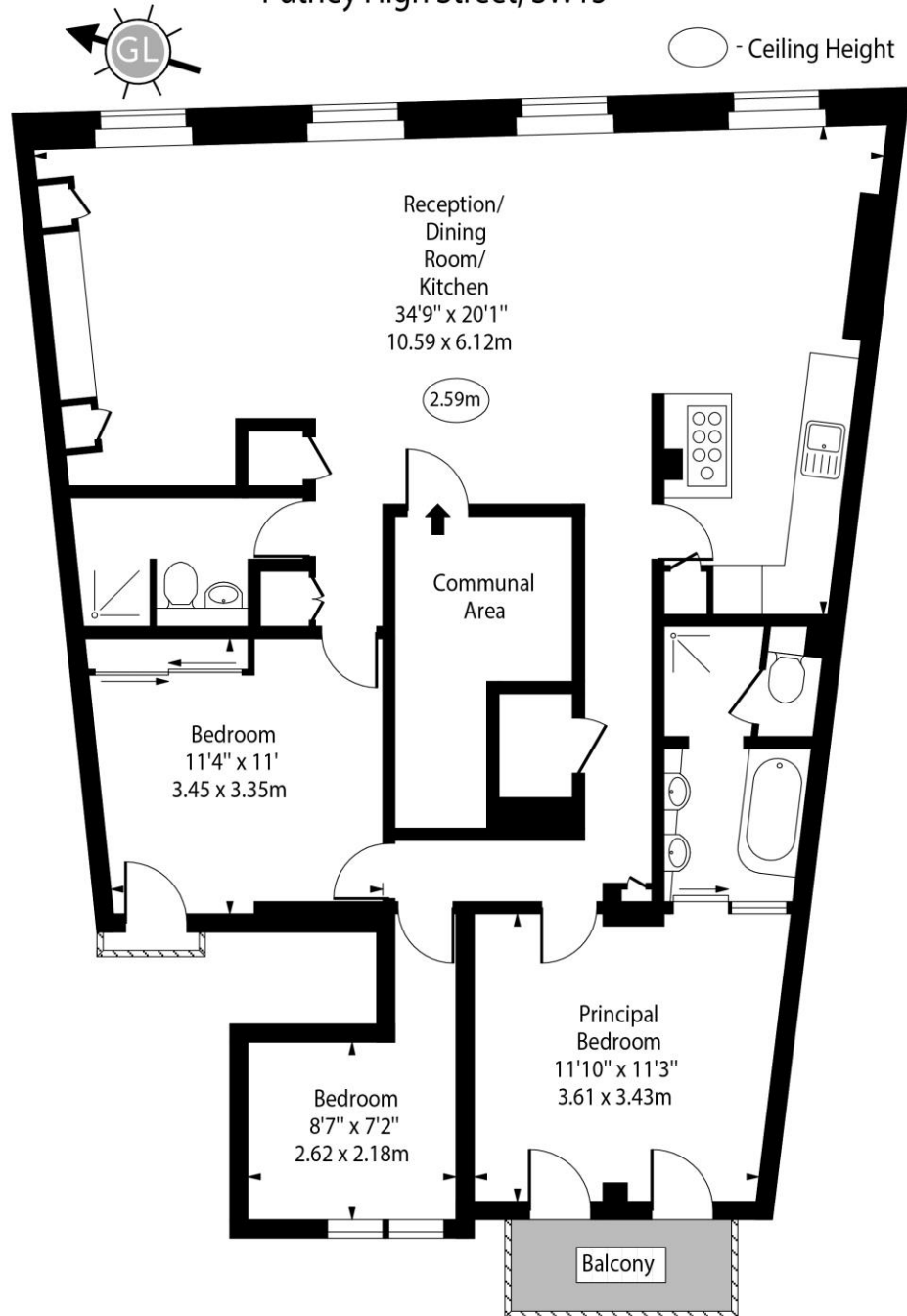
**Council Tax Band:** E



### *Chestertons Putney Sales*

153 Upper Richmond Road  
 London  
 SW15 2TX  
 putney@chestertons.co.uk  
 020 8246 5959  
 chestertons.co.uk

# Putney High Street, SW15



Second Floor

Approx Gross Internal Area 1120 Sq Ft - 104.05 Sq M  
(Excluding Communal Area)

For Illustration Purposes Only - Not To Scale  
[www.goldlens.co.uk](http://www.goldlens.co.uk)  
Ref. No. 026841E

