



Aubyn Square

Putney, SW15

Asking Price £1,100,000

A stunning townhouse set over four floors in a modern development built in 2013. Beautifully presented and in impeccable condition throughout, whilst offering in excess of 1800 sq. ft. with off street parking.



Aubyn Square

Putney, SW15

- Stunning modern townhouse
- beautifully presented
- offers over 1,800 square feet
- Off-street parking
- Located nearby the wonderful Richmond Park
- It is within walking distance of The Roehampton Club
- 0.6 miles to Barnes Rail Station.



A stunning townhouse split over four floors in a modern development built in 2013. Having been specifically finished to an individual specification by the current owner this property is beautifully presented and offers circa 1,600 square feet.

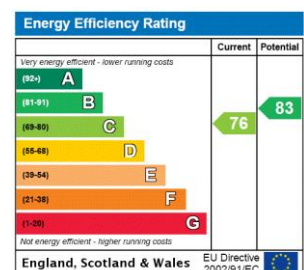
The house comprises of a stunning and spacious reception with doors leading out to the private garden, modern kitchen, downstairs cloakroom, 5 double bedrooms, 3 bathrooms, and off-street parking.

The property is located nearby the wonderful Richmond Park and close to a wide variety of shops, bars and restaurants in Barnes and Putney. It is within walking distance of The Roehampton Club as well as excellent bus routes serving Barnes and Barnes Rail Station.

Tenure: Freehold

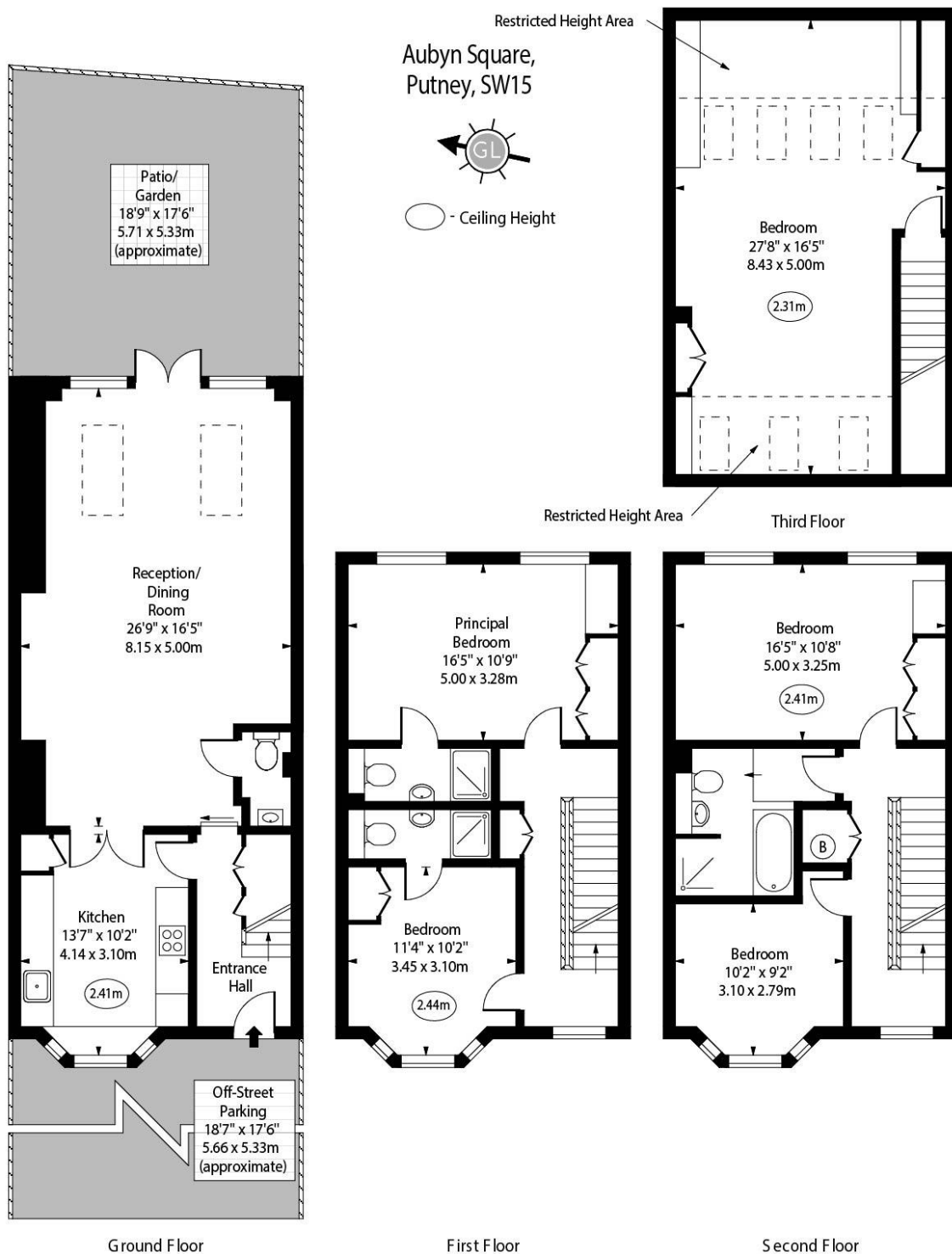
Local Authority: London Borough of Wandsworth

Council Tax Band: F



Chestertons Putney Sales

153 Upper Richmond Road
 London
 SW15 2TX
 putney@chestertons.co.uk
 020 8246 5959
 chestertons.co.uk



Approx Gross Internal Area 1900 Sq Ft - 176.51 Sq M
 Approx. Floor Area Including Restricted Heights 2040 Sq Ft - 189.52 Sq M

For Illustration Purposes Only - Not To Scale
www.goldlens.co.uk
 Ref. No. 026807E