



# Lytton Grove

Putney, SW15

Asking Price £550,000

A bright and spacious first floor flat in the highly regarded and secluded private gated development of Clockhouse Place.



# Lytton Grove

## Putney, SW15

- Gated development
- Two double bedrooms and two bathrooms
- Secure off street parking
- 0.4 miles from East Putney tube
- Communal gardens
- Offered chain free



A bright and spacious first floor flat in the highly regarded and secluded private gated development of Clockhouse Place.

As you enter the property you are greeted with a large entrance hall with fantastic storage options. As you head left you reach the principle bedroom, with ample built in storage options and a well appointed en-suite shower room. Back through the hallway you have a separate kitchen area with plenty of storage and preparation space. There is an additional family bathroom off the hallway with bath tub.

At the rear of the flat is a large reception room, benefitting from two bay windows, overlooking the communal gardens. This room allows enough space for sitting area as well as a large dining room table, creating a fantastic space to entertain.

The property benefits from attractive and well maintained communal gardens. The flat is a short walk from East Putney tube and Putney mainline stations and comes with its own allocated parking space. Offered with no onward chain.

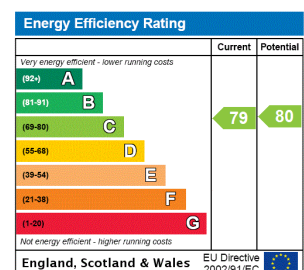
**Tenure:** Leasehold (expiry: 01/06/2121)

**Service Charge:** tbc

**Ground Rent:** tbc

**Local Authority:** London Borough of Wandsworth

**Council Tax Band:** F



**Chestertons Putney Sales**

153 Upper Richmond Road

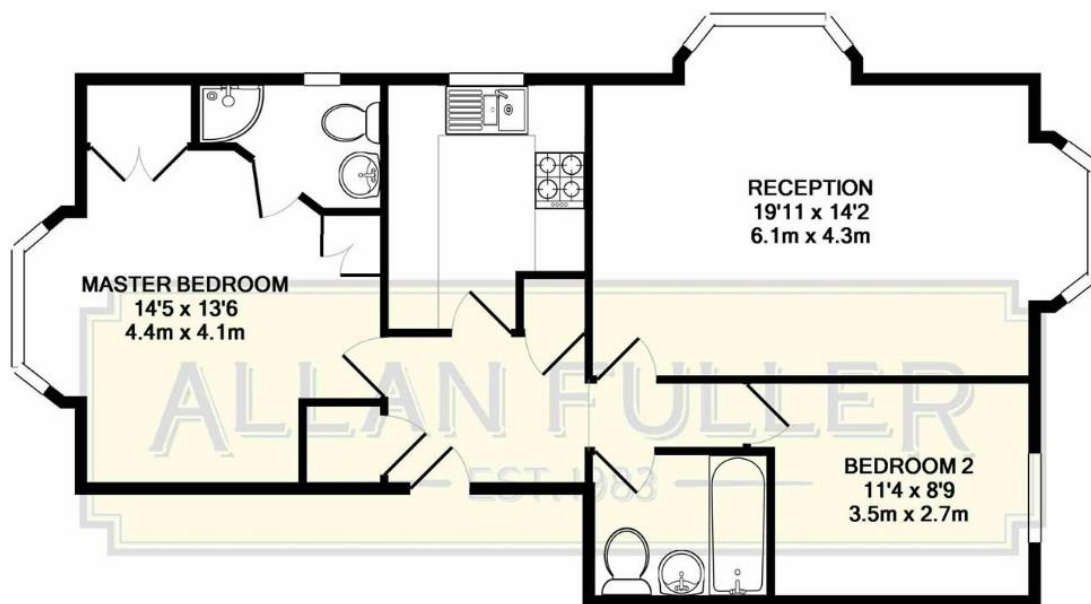
London

SW15 2TX

putney@chestertons.co.uk

020 8246 5959

chestertons.co.uk



LYTTON GROVE, SW15  
TOTAL APPROX. FLOOR AREA 730 SQ.FT. (67.8 SQ.M.)

Whilst every attempt has been made to ensure the accuracy of the floor plan contained here, measurements of doors, windows, rooms and any other items are approximate and no responsibility is taken for any error, omission, or mis-statement. This plan is for illustrative purposes only and should be used as such by any prospective purchaser. The services, systems and appliances shown have not been tested and no guarantee as to their operability or efficiency can be given  
Made with Metropix ©2019

