



Exeter House

Putney Heath, SW15

Asking Price £550,000

This beautiful presented two bedroom flat, located on the second floor of this well-established development offers manicured communal gardens, tennis courts, off street parking, lift and porterage.



Exeter House

Putney Heath, SW15

- Stunning 2nd floor apartment
- 1930's Art Deco development
- Located on Putney Heath
- Communal gardens with tennis courts
- Off-street parking
- On-site porter
- Double glazing throughout
- Lift



This beautiful presented two bedroom flat, located on the second floor of this well-established development offers manicured communal gardens, tennis courts. off street parking, lift and portage.

The accommodation offers 938sf, which includes two double bedrooms both with inbuilt storage, family bathroom, additional separate WC, large reception and kitchen with access to un-demised balcony over looking the communal gardens.

The apartment benefits from double glazing throughout and off street parking.

The property is secreted away on Putney Heath, also known as the "Putney Village" with it's leafy surroundings, local pub and cricket pitch. There are excellent direct bus services to Putney High Street, the West End, the City, Richmond & Tooting. Additional transport links include East Putney Underground (District Line) and Putney mainline station with easy routes into London Victoria and London Waterloo.

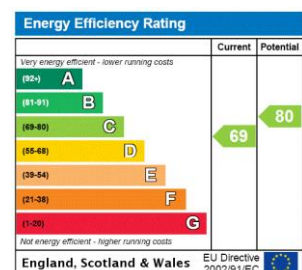
Tenure: Share of Freehold (Expiry: 31/03/2159)

Service Charge: £5,826.93 p.a

Ground Rent: Peppercorn

Local Authority: London Borough of Wandsworth

Council Tax Band: E



Chestertons Putney Sales

153 Upper Richmond Road

London

SW15 2TX

putney@chestertons.co.uk

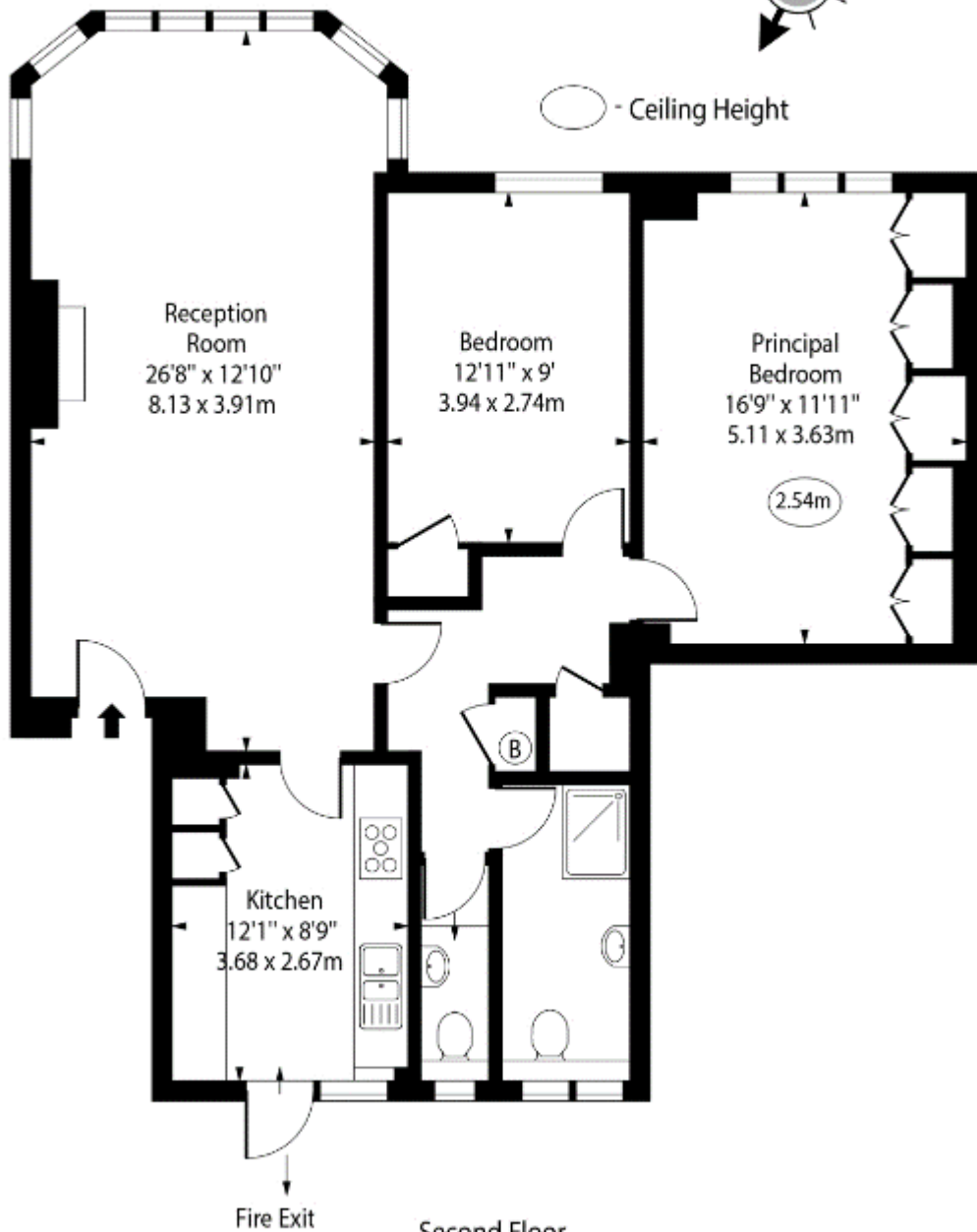
020 8246 5959

chestertons.co.uk

Exeter House,
Putney Heath, SW15



○ - Ceiling Height



Second Floor

Approx Gross Internal Area 938 Sq Ft - 87.14 Sq M

For Illustration Purposes Only - Not To Scale

www.goldlens.co.uk

Ref. No. 026214E

