



Kersfield Road

Putney Hill, SW15

Asking Price £475,000

This lovely 2-bedroom first floor home is arranged over a split level with original parquet flooring and views over the gardens. Heath Royal is located just off Kersfield Road/Putney Hill and therefore within easy reach of the amenities of Putney.

CHESTERTONS



Kersfield Road

Putney Hill, SW15

- No Onward Chain
- Split Level
- Two Double Bedrooms
- Garage
- Communal Gardens



Stunning & truly spacious, 2 double bedroom, split level apartment. This lovely home is arranged with first floor entrance to double reception room with original parquet flooring with views over the gardens, sleek separate, fully fitted kitchen. To the second floor, two very generous double bedrooms with wood flooring, offering very good storage and a contemporary, fully tiled shower room.

Heath Royal is located just off Kersfield Road/Putney Hill and therefore within easy reach of Putney High Street, Putney train station and East Putney tube station (District Line) which are within walking distance and there are numerous bus links immediately accessible from Putney Hill, for easy access to Putney, Wimbledon Village, Fulham and beyond.

Tenure: Share of Freehold (expiry: 23/01/3024)

Service Charge: TBC

Ground Rent: TBC

Local Authority: London Borough of Wandsworth

Council Tax Band: D

Energy Efficiency Rating		
	Current	Potential
Very energy efficient - lower running costs		
A (92-100)		
B (81-91)		
C (69-80)		73
D (55-68)		
E (39-54)	39	
F (21-38)		
G (1-20)		
Not energy efficient - higher running costs		
England, Scotland & Wales		EU Directive 2002/91/EC

Chestertons Putney Sales

153 Upper Richmond Road

London

SW15 2TX

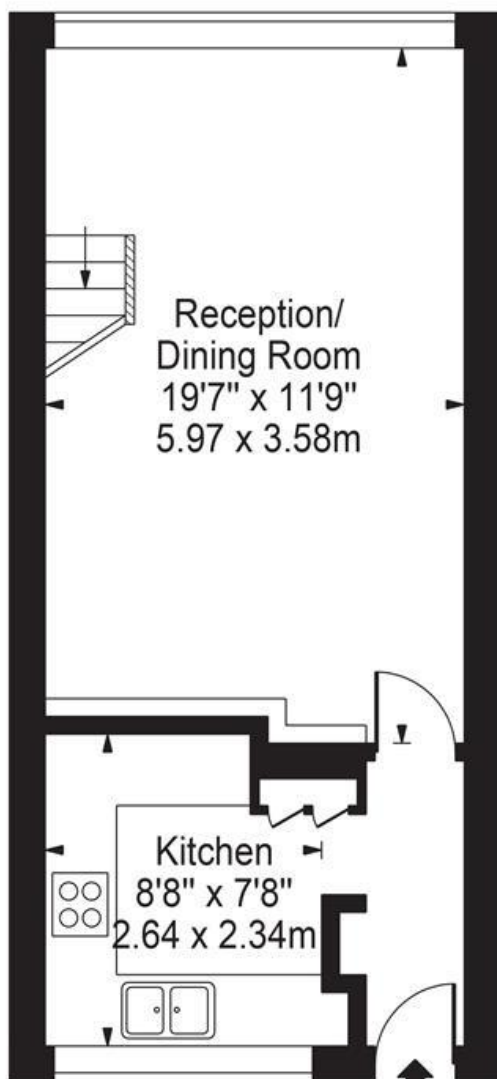
putney@chestertons.co.uk

020 8246 5959

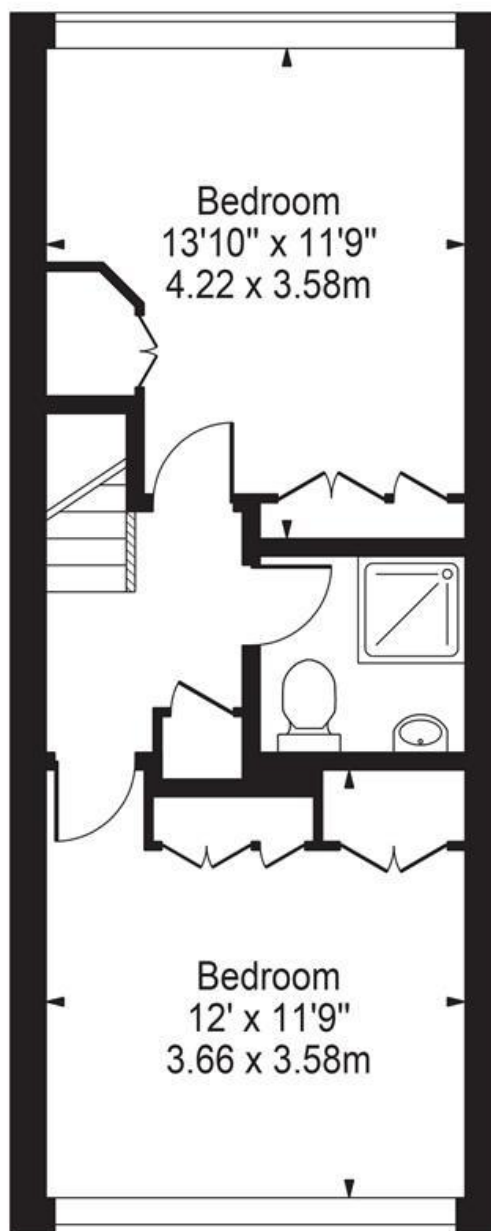
chestertons.co.uk

Heath Royal, SW15

Approx. Gross Internal Area 708 Sq Ft - 65.78 Sq M



First Floor



Second Floor

For Illustration Purposes Only - Not To Scale Floor Plan by Mira Nikolova Photography

This floor plan should be used as a general outline for guidance only and does not constitute in whole or in part an offer or contract. Any intending purchaser or lessee should satisfy themselves by inspection, searches, enquiries and full survey as to the correctness of each statement. Any areas, measurements or distances quoted are approximate and should not be used to value a property or be the basis of any sale or let.

