



Ringwood Gardens

London, SW15

Asking Price £600,000

Spacious four bed, mid-century town house set in an idyllic leafy location betwixt Putney Heath and Richmond Park. The property benefits from driveway parking, garage and a private Southeast facing garden.



Ringwood Gardens

London, SW15

- Four bedrooms
- Southeast facing private garden
- Large windows
- Driveway
- Garage
- EV charger
- 1,296 Sq. Ft.
- Richmond Park and Putney Heath walking distance



Spacious four bed, mid-century town house set in an idyllic leafy location betwixt Putney Heath and Richmond Park. The property benefits from driveway parking, garage and a private Southeast facing garden.

Entering on the ground floor you are greeted with a spacious hallway. To the right is a garage for storage or parking, ahead of you is a guest WC, and handy utility room with direct access to the private Southeast facing garden. Currently used as a home office the fourth bedroom is at the rear of the property featuring bifold doors opening on to the garden. There is a rear access gate which opens directly onto Wimbledon Common / Putney Heath making this ideal for dogwalkers and families.

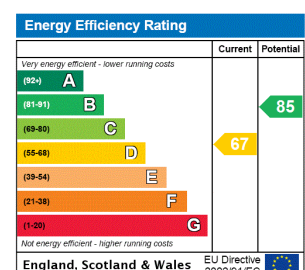
The first floor comprises a large open living room benefiting from full width windows flooding the space with natural light. The rear of the property boasts a spacious dining area and modern kitchen with a range cooker. Large windows overlook the garden and benefit from the Southeast aspect.

The top floor features a large family bathroom and three double bedrooms all of which benefit from built in storage.

Tenure: Freehold

Local Authority: London Borough of Wandsworth

Council Tax Band: E



Chestertons Putney Sales

153 Upper Richmond Road

London

SW15 2TX

putney@chestertons.co.uk

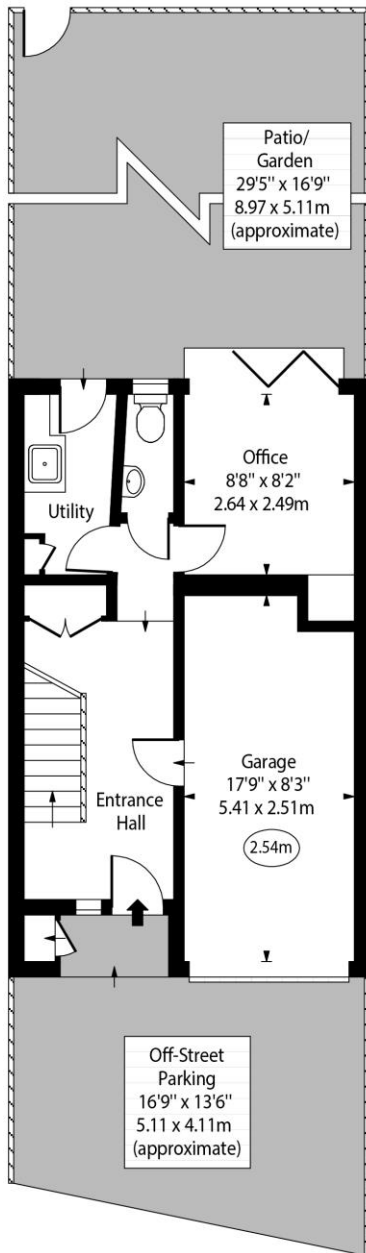
020 8246 5959

chestertons.co.uk

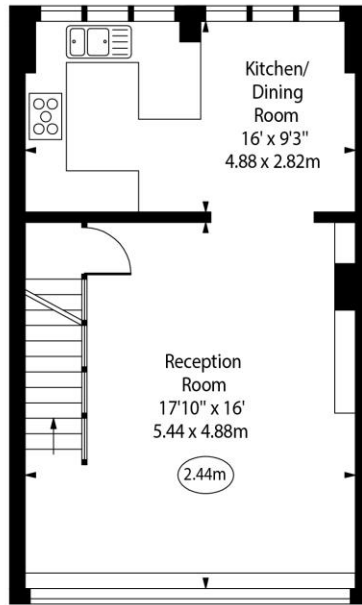
Ringwood Gardens, SW15



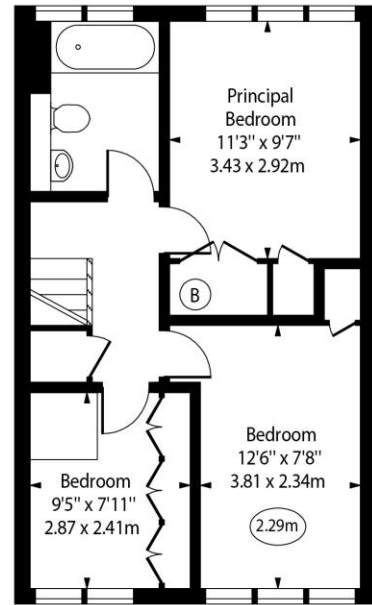
○ - Ceiling Height



Ground Floor



First Floor



Second Floor

Approx Gross Internal Area 1296 Sq Ft - 120.40 Sq M
(Including Garage)

For Illustration Purposes Only - Not To Scale
www.goldlens.co.uk
Ref. No. 026050E

